



Building Committee Presentation:  
Tisbury Elementary School

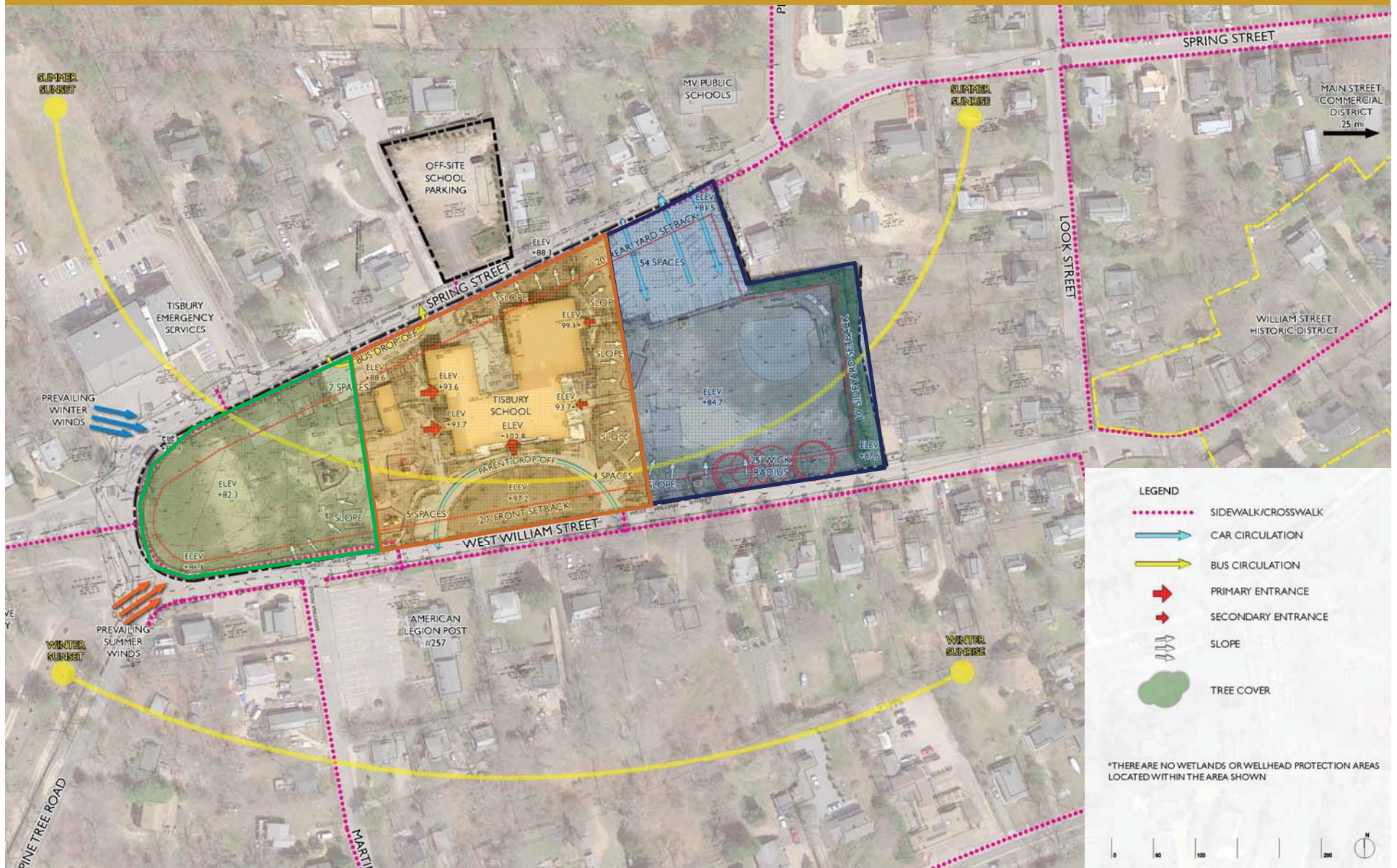


August 28, 2017



1. Site Analysis
2. Discussion of Options:
  - A. Preferred Option submitted to the MSBA
    - i. Option 3B – 3-story school located east side of site, existing building to remain during construction
  - B. New Design Options:
    - i. Option 3C – 3-story school located east side of site, existing gym removed prior to construction
    - ii. Option 3D – 3-story school located Center of Site, existing building removed prior to construction
    - iii. Option 3E – 3-story school located west side of site, existing building to remain during construction.
2. Precedents: Building Styles & Materials Discussion
3. Project Schedule

# SITE ANALYSIS | WHERE SHOULD BUILDING BE LOCATED?



- LEGEND**
- ⋯ SIDEWALK/CROSSWALK
  - CAR CIRCULATION
  - BUS CIRCULATION
  - PRIMARY ENTRANCE
  - SECONDARY ENTRANCE
  - ↘ SLOPE
  - TREE COVER

\*THERE ARE NO WETLANDS OR WELLHEAD PROTECTION AREAS LOCATED WITHIN THE AREA SHOWN

# OPTION 3B.1 | NEW 3-STORY SCHOOL LOCATED EAST SIDE OF SITE, EXT'G BUILDING TO REMAIN SITE PLAN, SITE SECTION, PROS & CONS



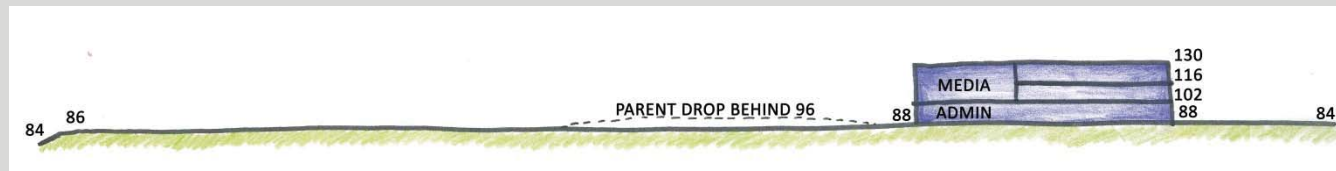
## PROS

- Entire existing building to remain during construction
- Most recreational areas are on one side of site
- Lower grade play area proximity to classrooms
- Classroom Neighborhoods

## CONS

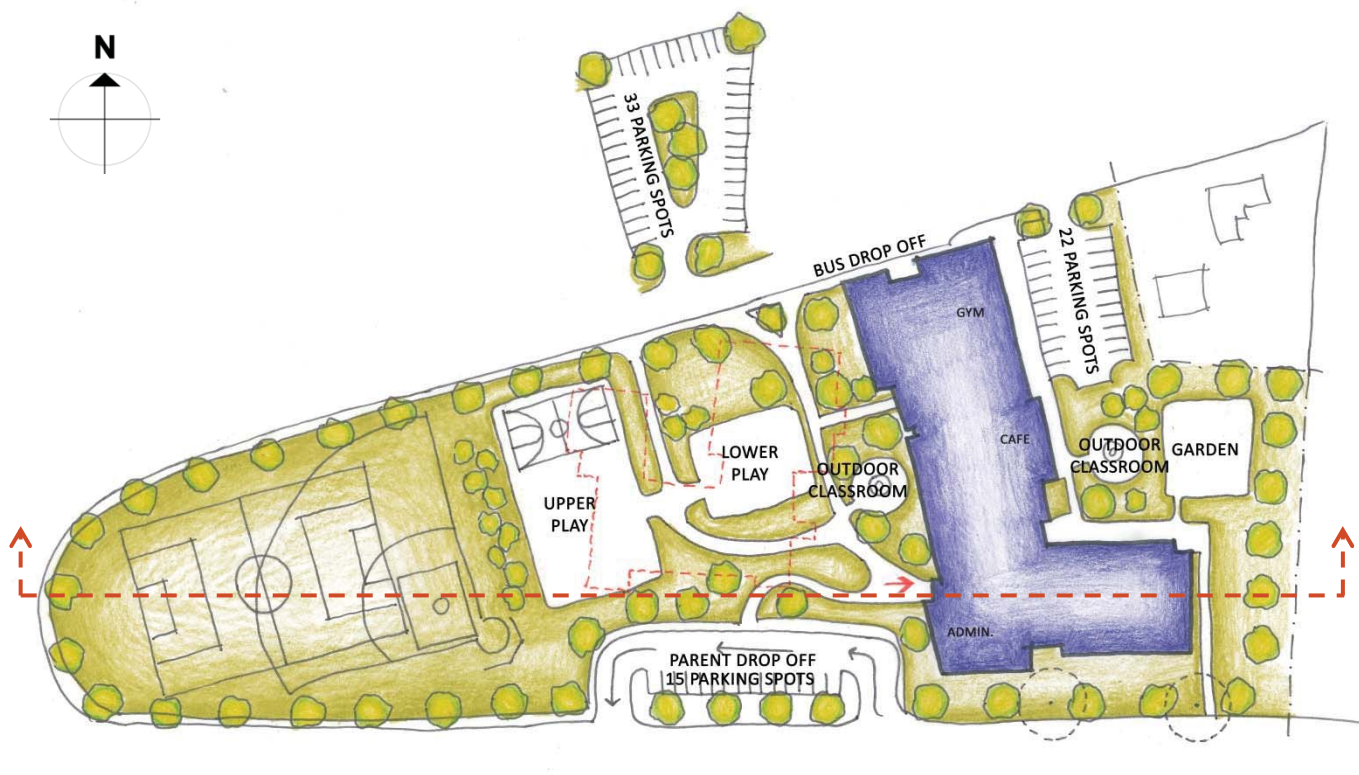
- Dispersed parking areas reduce green space
- Playfield proximity to Gym

## SITE PLAN



## SITE SECTION

# OPTION 3B.2 | NEW 3-STORY SCHOOL LOCATED EAST SIDE OF SITE, EXT'G BUILDING TO REMAIN SITE PLAN, SITE SECTION, PROS & CONS



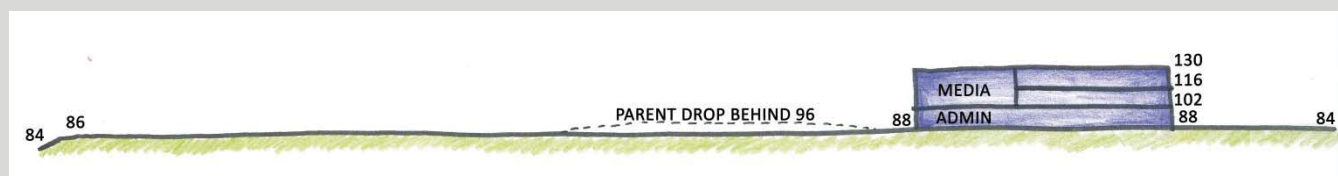
## PROS

- Entire existing building to remain during construction
- Most recreational areas are on one side of site
- Separated bus & parents drop-off
- Lower grade play area proximity to classrooms
- Parking across Spring Street allows for more green space on site

## CONS

- Playfield proximity to Gym

## SITE PLAN



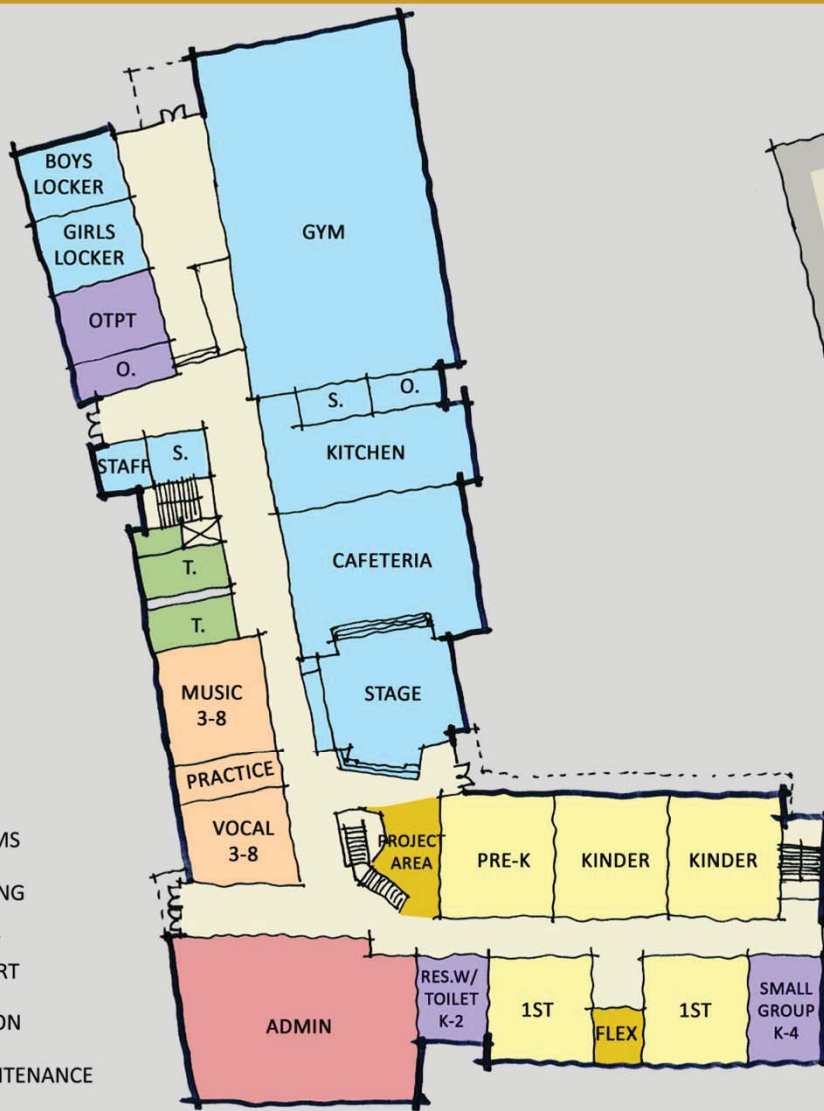
## SITE SECTION

# OPTION 3B |

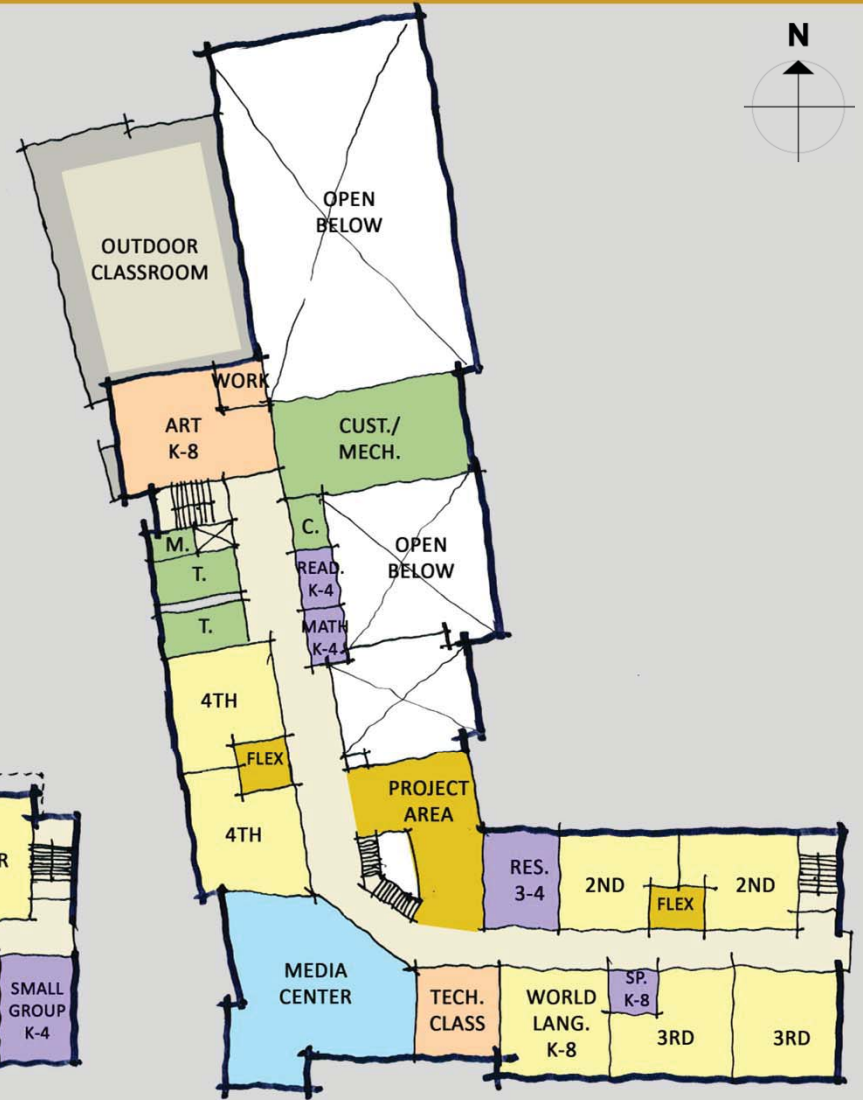
NEW 3-STORY SCHOOL LOCATED EAST SIDE OF SITE, EXT'G BUILDING TO REMAIN  
FLOOR PLANS



- LEGEND**
- CLASSROOMS
  - BREAKOUT
  - SHARED PROGRAMS
  - MEDIA/GYM/DINING
  - ADMINISTRATIVE/  
TEACHERS SUPPORT
  - SPECIAL EDUCATION
  - CUSTODIAL /MAINTENANCE



**FIRST FLOOR PLAN**



**SECOND FLOOR PLAN**

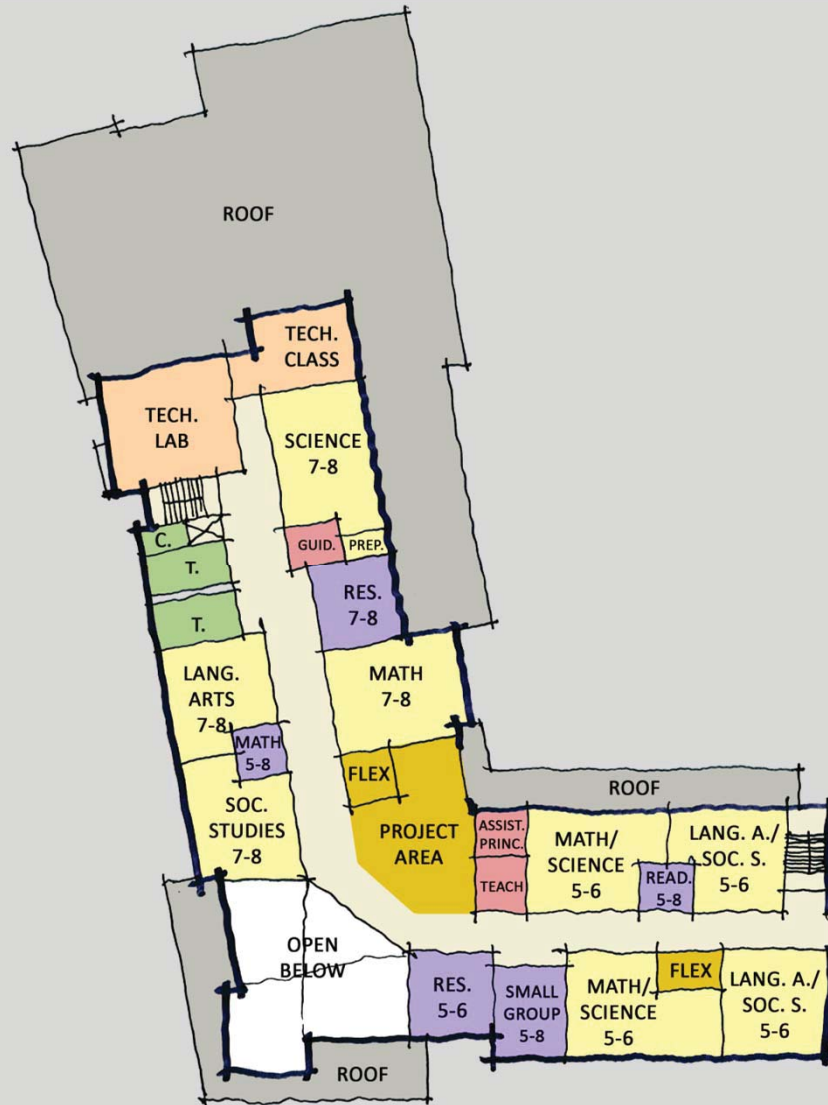
# OPTION 3B |

NEW 3-STORY SCHOOL LOCATED EAST SIDE OF SITE, EXT'G BUILDING TO REMAIN  
FLOOR PLANS



**LEGEND**

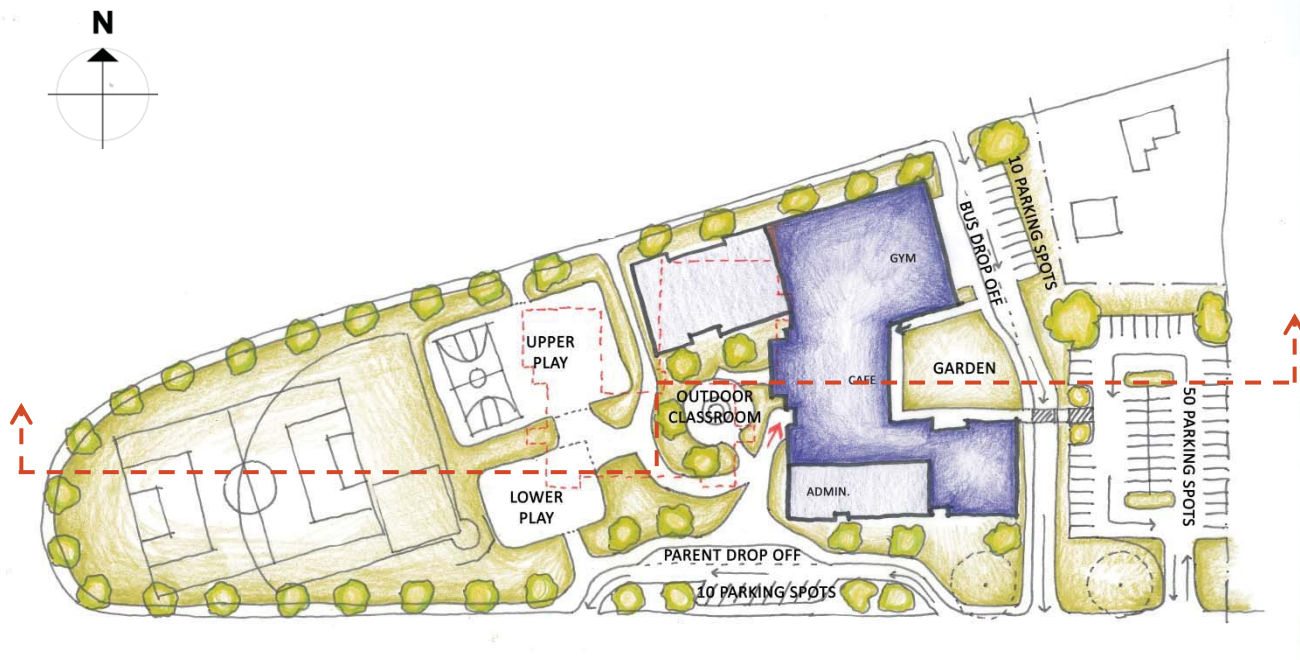
- CLASSROOMS
- BREAKOUT
- SHARED PROGRAMS
- MEDIA/GYM/DINING
- ADMINISTRATIVE/  
TEACHERS SUPPORT
- SPECIAL EDUCATION
- CUSTODIAL /MAINTENANCE



**THIRD FLOOR PLAN**

# OPTION 3C |

NEW 3-STORY SCHOOL LOCATED EAST SIDE OF SITE, EXT'G GYM REMOVED  
SITE PLAN, SITE SECTION, PROS & CONS



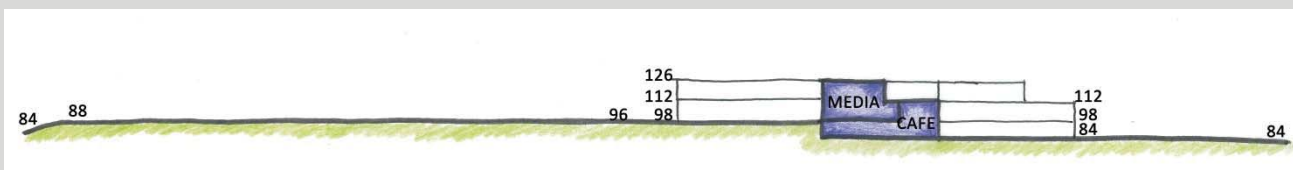
## PROS

- All recreational & play activates on one side of site
- Garden near Cafeteria
- Majority of parking on one side of site
- Lowest total building elevation height (126' high)
- Classroom Neighborhoods

## CONS

- Removal of existing Gym prior to construction
- Need for portable classrooms for Gym, Music & World Lang
- Playfields proximity to Gym
- Playground proximity for lower grades

## SITE PLAN



## SITE SECTION



# OPTION 3C |

## NEW 3-STORY SCHOOL LOCATED EAST SIDE OF SITE, EXT'G GYM REMOVED FLOOR PLANS



### LEGEND

- CLASSROOMS
- BREAKOUT
- SHARED PROGRAMS
- MEDIA/GYM/DINING
- ADMINISTRATIVE/  
TEACHERS SUPPORT
- SPECIAL EDUCATION
- CUSTODIAL /MAINTENANCE

FIRST FLOOR PLAN

# OPTION 3C |

NEW 3-STORY SCHOOL LOCATED EAST SIDE OF SITE, EXT'G GYM REMOVED  
FLOOR PLANS



**SECOND FLOOR PLAN**

- LEGEND
- CLASSROOMS
  - BREAKOUT
  - SHARED PROGRAMS
  - MEDIA/GYM/DINING
  - ADMINISTRATIVE/TEACHERS SUPPORT
  - SPECIAL EDUCATION
  - CUSTODIAL /MAINTENANCE

# OPTION 3C |

NEW 3-STORY SCHOOL LOCATED EAST SIDE OF SITE, EXT'G GYM REMOVED  
FLOOR PLANS



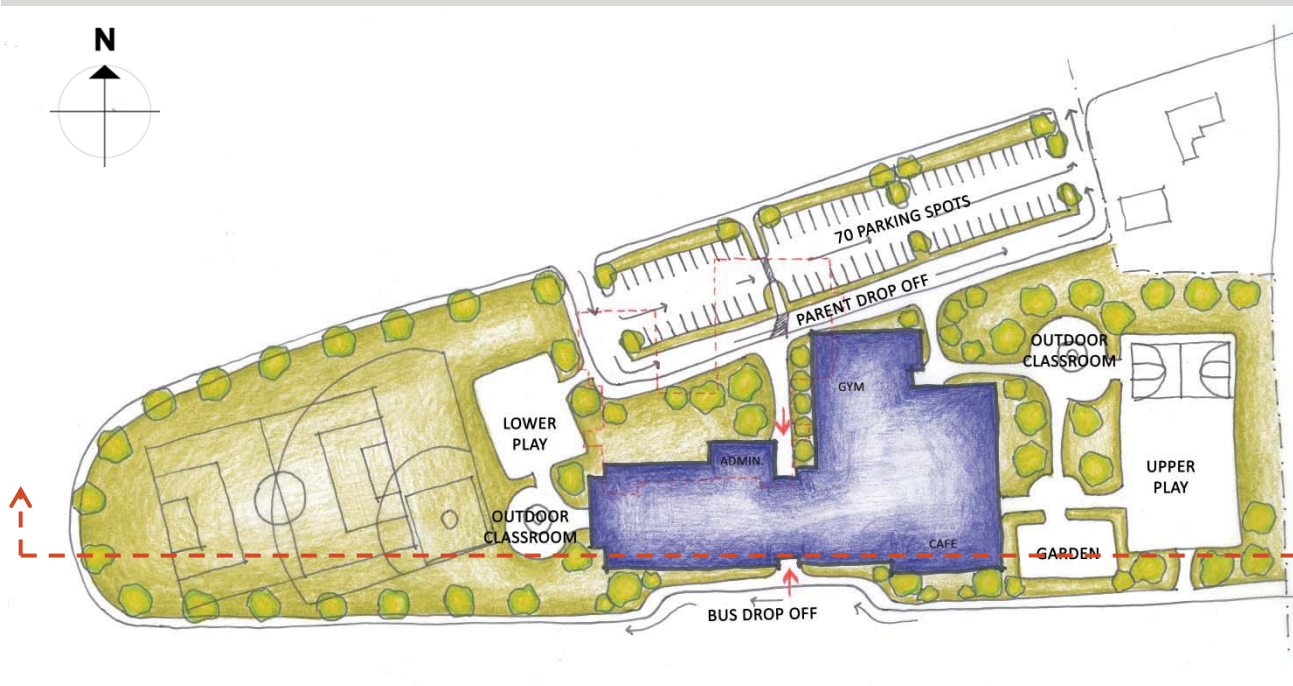
LEGEND

- CLASSROOMS
- BREAKOUT
- SHARED PROGRAMS
- MEDIA/GYM/DINING
- ADMINISTRATIVE/  
TEACHERS SUPPORT
- SPECIAL EDUCATION
- CUSTODIAL /MAINTENANCE

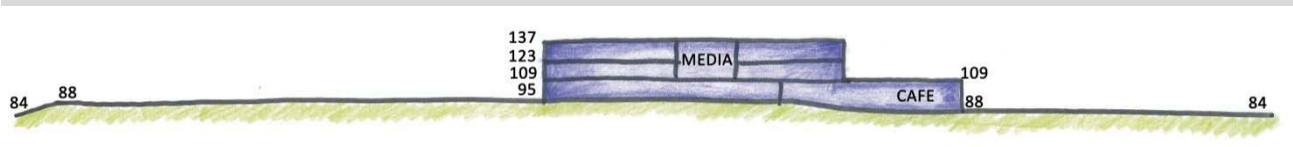
THIRD FLOOR PLAN

# OPTION 3D |

NEW 3-STORY SCHOOL LOCATED CENTER OF SITE, EXT'G BUILDING REMOVED  
SITE PLAN, SITE SECTION, PROS & CONS



SITE PLAN



SITE SECTION

## PROS

- Formal building front faces Spring Street and West Williams Street
- Lower grade play area proximity to classrooms
- Centralized parking area with parent drop-off incorporated
- Garden near Cafeteria

## CONS

- Entire existing building to be demolished prior to construction
- Need for portable classrooms for entire school
- Division of site elements
- Highest total building elevation height (137' high)
- Playfield proximity to Gym
- Cost Increase
- Extends construction duration

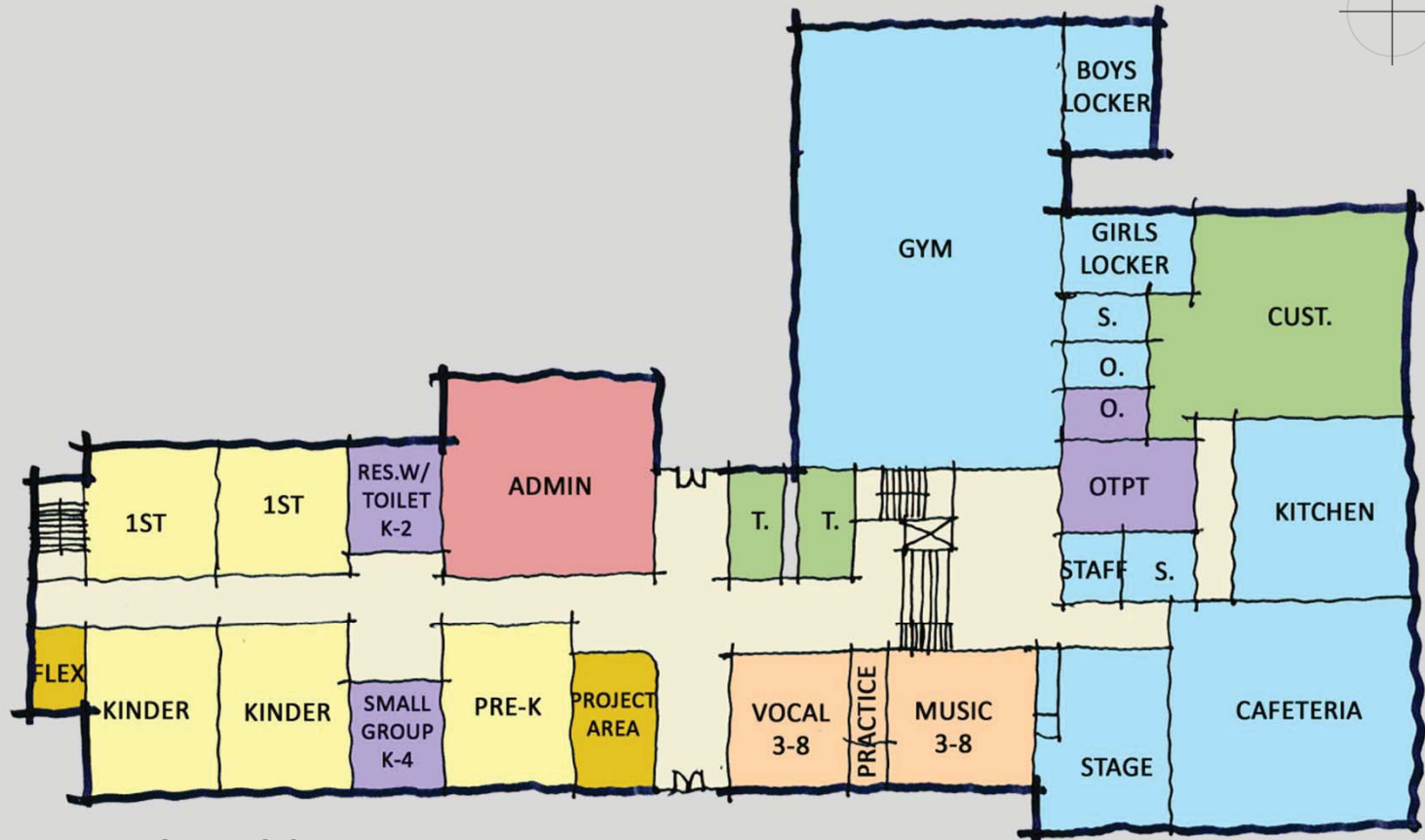
# OPTION 3D |

## NEW 3-STORY SCHOOL LOCATED CENTER OF SITE, EXT'G BUILDING REMOVED FLOOR PLANS



### LEGEND

- CLASSROOMS
- BREAKOUT
- SHARED PROGRAMS
- MEDIA/GYM/DINING
- ADMINISTRATIVE/  
TEACHERS SUPPORT
- SPECIAL EDUCATION
- CUSTODIAL /MAINTENANCE



FIRST FLOOR PLAN

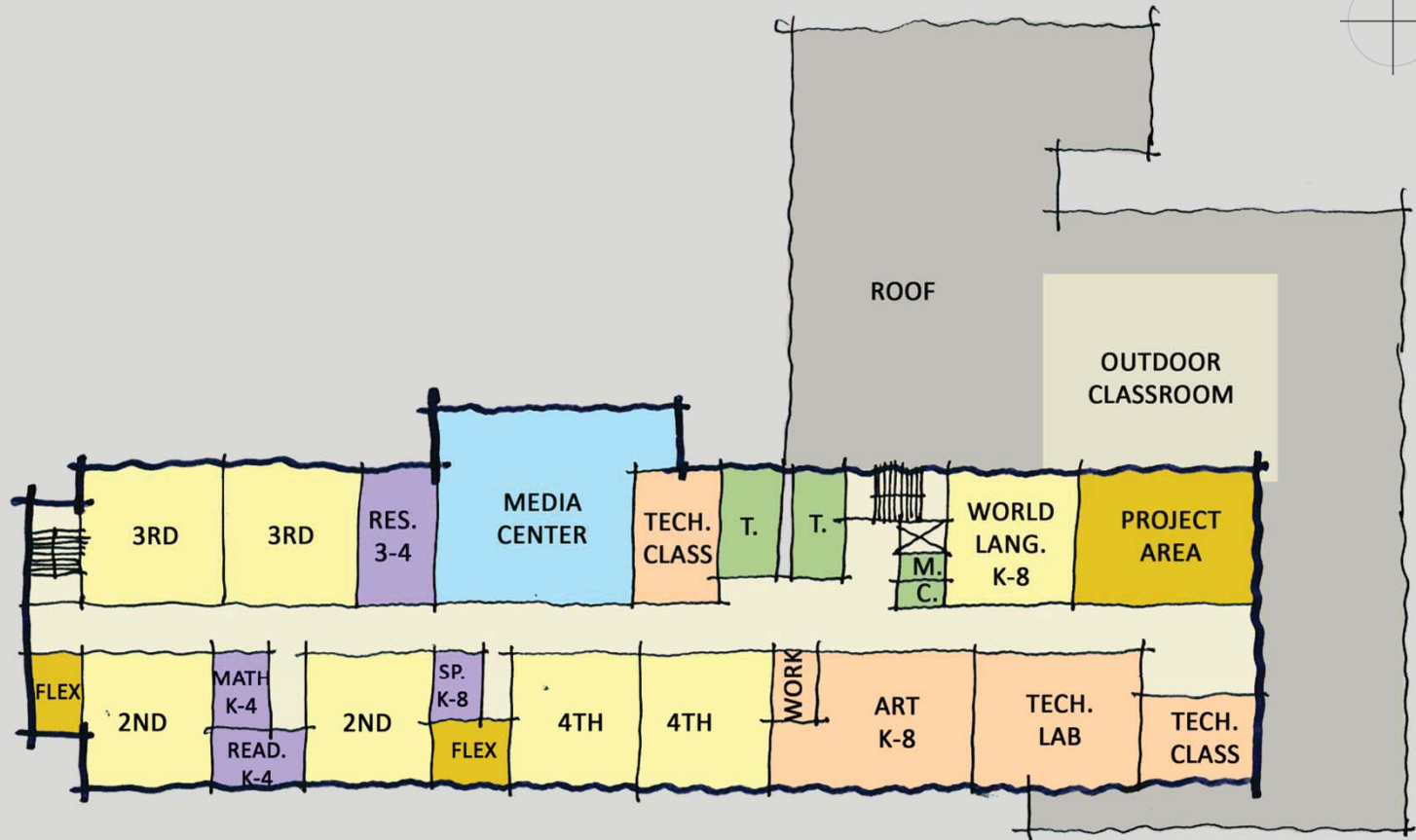
# OPTION 3D |

## NEW 3-STORY SCHOOL LOCATED CENTER OF SITE, EXT'G BUILDING REMOVED FLOOR PLANS



### LEGEND

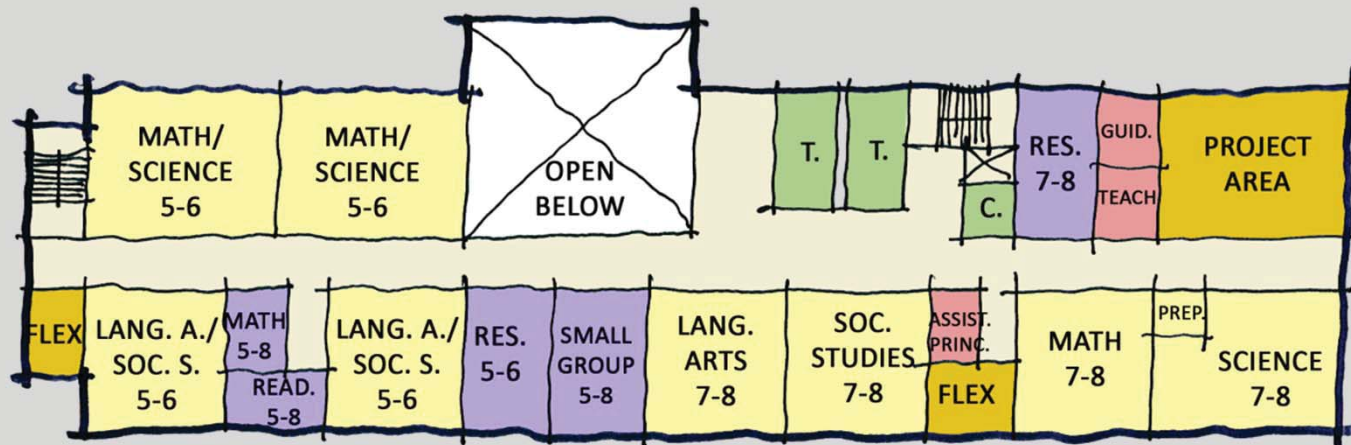
- CLASSROOMS
- BREAKOUT
- SHARED PROGRAMS
- MEDIA/GYM/DINING
- ADMINISTRATIVE/  
TEACHERS SUPPORT
- SPECIAL EDUCATION
- CUSTODIAL /MAINTENANCE



SECOND FLOOR PLAN

# OPTION 3D |

NEW 3-STORY SCHOOL LOCATED CENTER OF SITE, EXT'G BUILDING REMOVED  
FLOOR PLANS



THIRD FLOOR PLAN

LEGEND

- CLASSROOMS
- BREAKOUT
- SHARED PROGRAMS
- MEDIA/GYM/DINING
- ADMINISTRATIVE/TEACHERS SUPPORT
- SPECIAL EDUCATION
- CUSTODIAL /MAINTENANCE

# OPTION 3E |

NEW 3-STORY SCHOOL LOCATED WEST SIDE OF SITE, EXT'G BUILDING TO REMAIN  
SITE PLAN, SITE SECTION, PROS & CONS



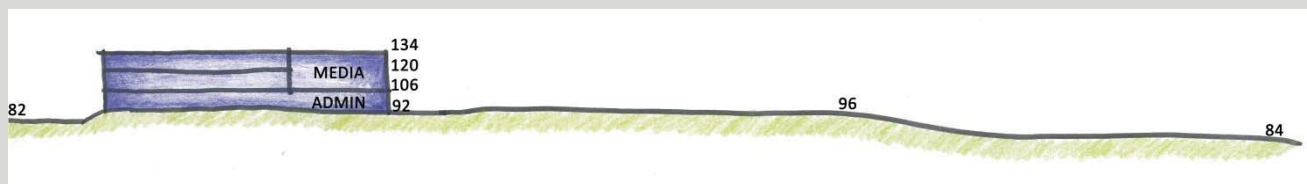
## PROS

- Entire existing building to remain during construction
- Most recreational areas are on one side of site
- Lower grade play area proximity to classrooms

## CONS

- Building could not be expanded in the future
- West end of site has elevated grade near sidewalk

## SITE PLAN



## SITE SECTION



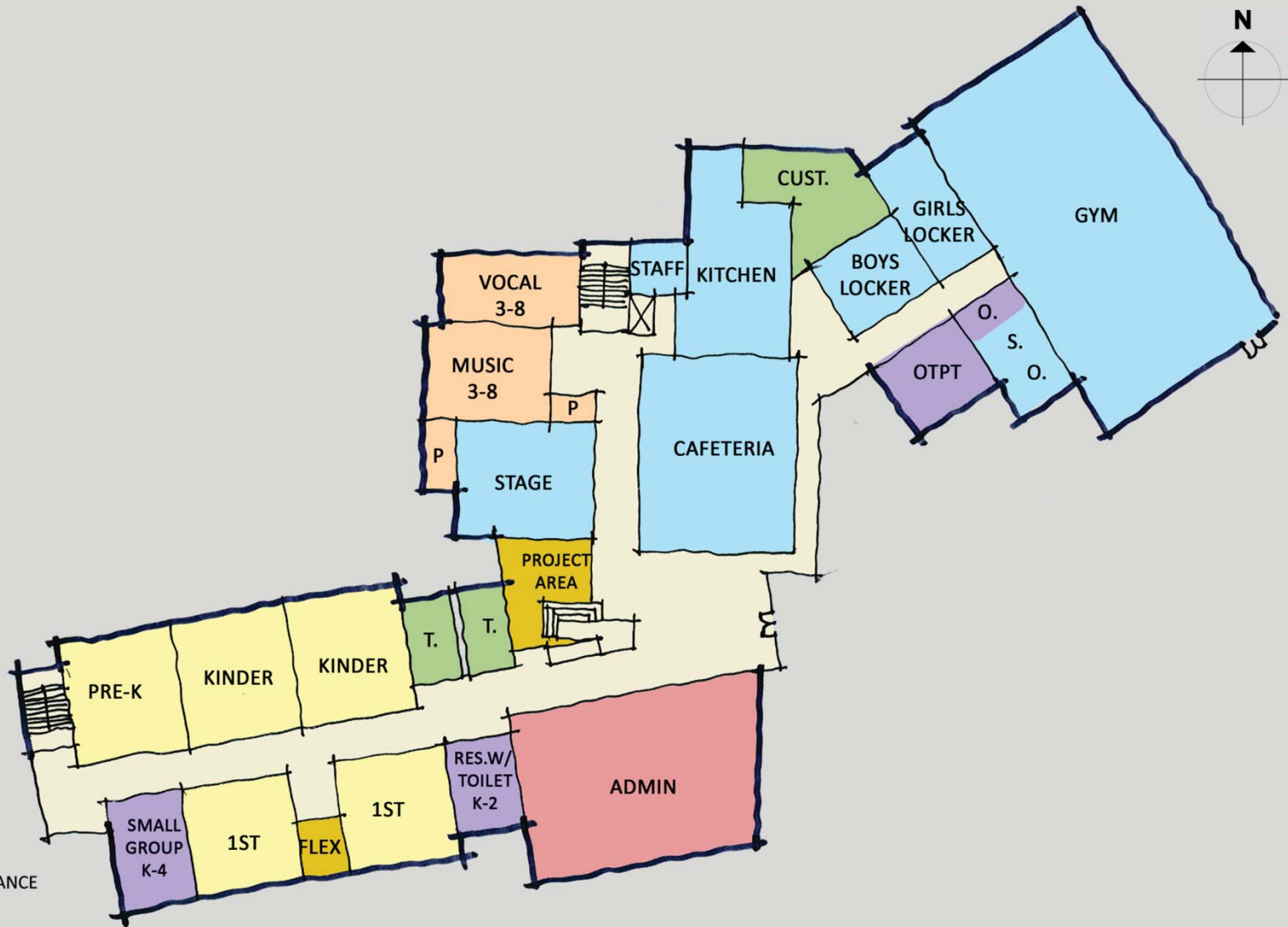
# OPTION 3E |

NEW 3-STORY SCHOOL LOCATED WEST SIDE OF SITE, EXT'G BUILDING TO REMAIN  
FLOOR PLANS



LEGEND

- CLASSROOMS
- BREAKOUT
- SHARED PROGRAMS
- MEDIA/GYM/DINING
- ADMINISTRATIVE/  
TEACHERS SUPPORT
- SPECIAL EDUCATION
- CUSTODIAL /MAINTENANCE



FIRST FLOOR PLAN

# OPTION 3E |

NEW 3-STORY SCHOOL LOCATED WEST SIDE OF SITE, EXT'G BUILDING TO REMAIN  
FLOOR PLANS



LEGEND

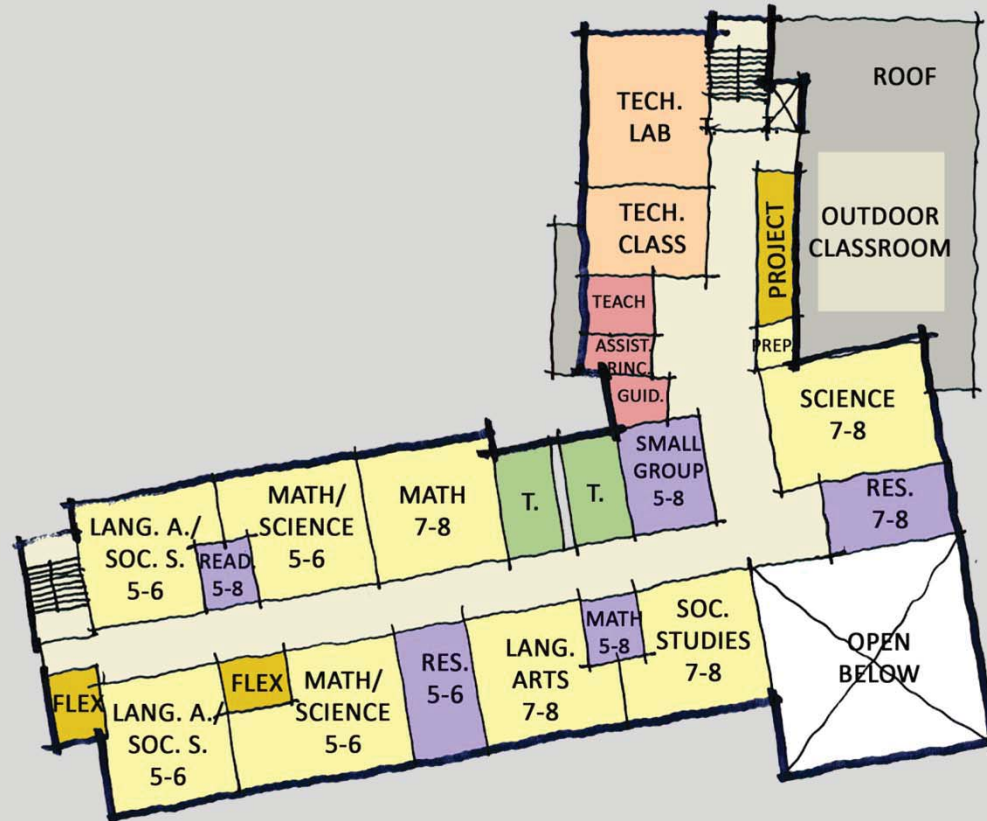
- CLASSROOMS
- BREAKOUT
- SHARED PROGRAMS
- MEDIA/GYM/DINING
- ADMINISTRATIVE/  
TEACHERS SUPPORT
- SPECIAL EDUCATION
- CUSTODIAL /MAINTENANCE



SECOND FLOOR PLAN

# OPTION 3E |

NEW 3-STORY SCHOOL LOCATED WEST SIDE OF SITE, EXT'G BUILDING TO REMAIN  
FLOOR PLANS



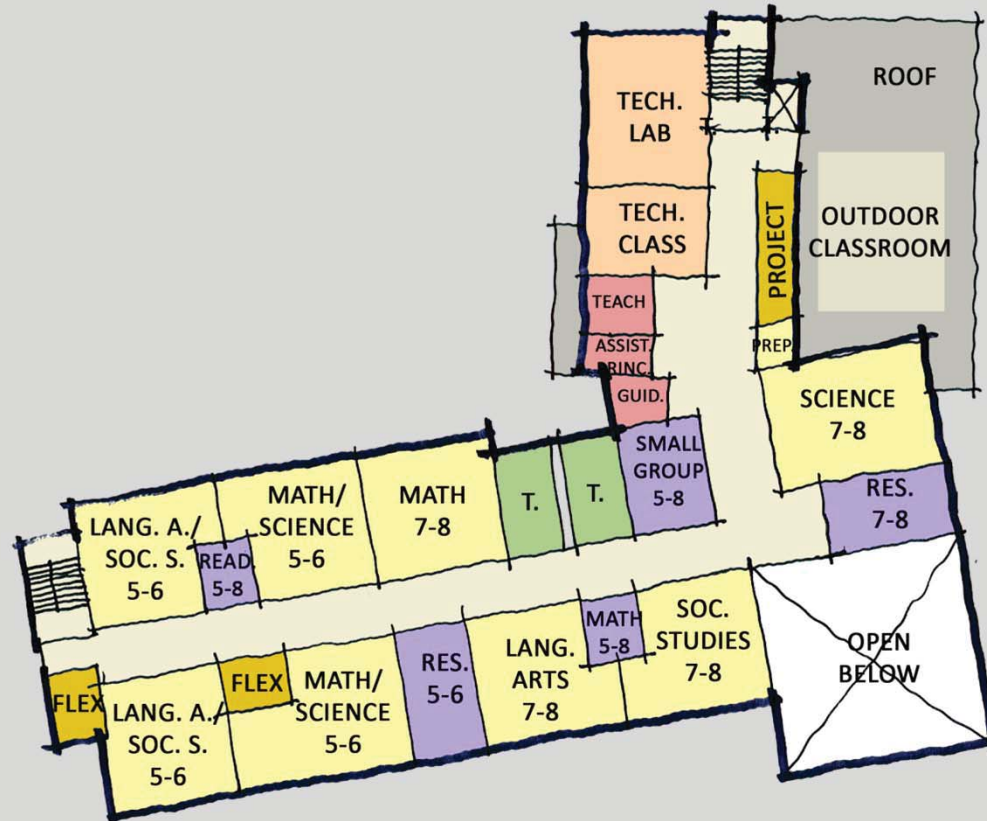
THIRD FLOOR PLAN

LEGEND

- CLASSROOMS
- BREAKOUT
- SHARED PROGRAMS
- MEDIA/GYM/DINING
- ADMINISTRATIVE/TEACHERS SUPPORT
- SPECIAL EDUCATION
- CUSTODIAL /MAINTENANCE

# OPTION 3E |

NEW 3-STORY SCHOOL LOCATED WEST SIDE OF SITE, EXT'G BUILDING TO REMAIN  
FLOOR PLANS



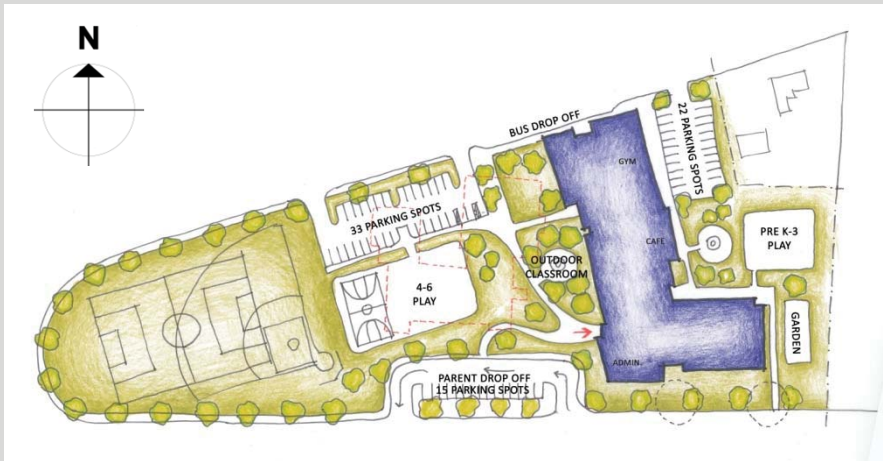
THIRD FLOOR PLAN

LEGEND

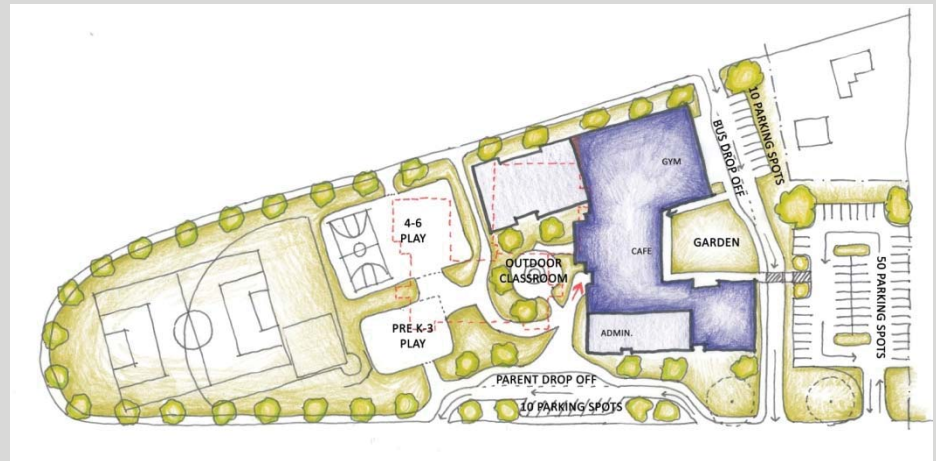
- CLASSROOMS
- BREAKOUT
- SHARED PROGRAMS
- MEDIA/GYM/DINING
- ADMINISTRATIVE/TEACHERS SUPPORT
- SPECIAL EDUCATION
- CUSTODIAL /MAINTENANCE

# DESIGN OPTIONS |

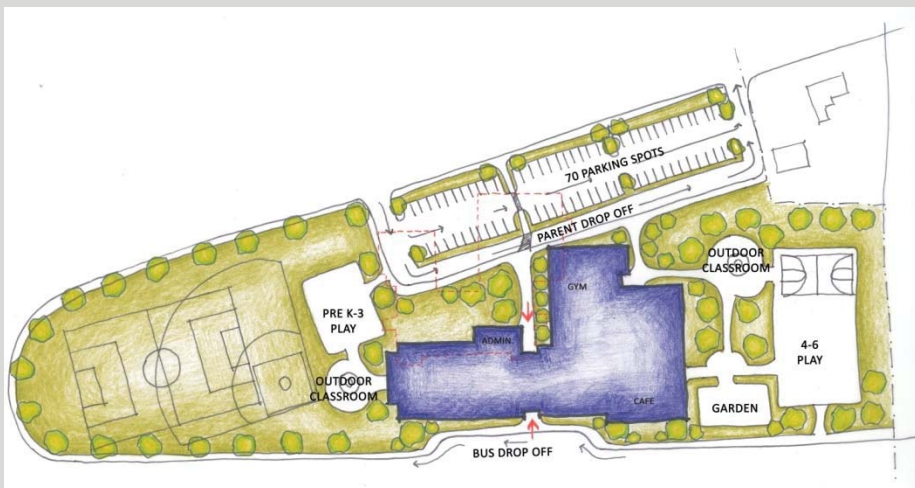
ALL OPTIONS



OPTION 3B : Located East Side of Site



OPTION 3C : Located East Side of Site Gym Removed



OPTION 3D: Located Center of Site



OPTION 3E: Located on West side of Site

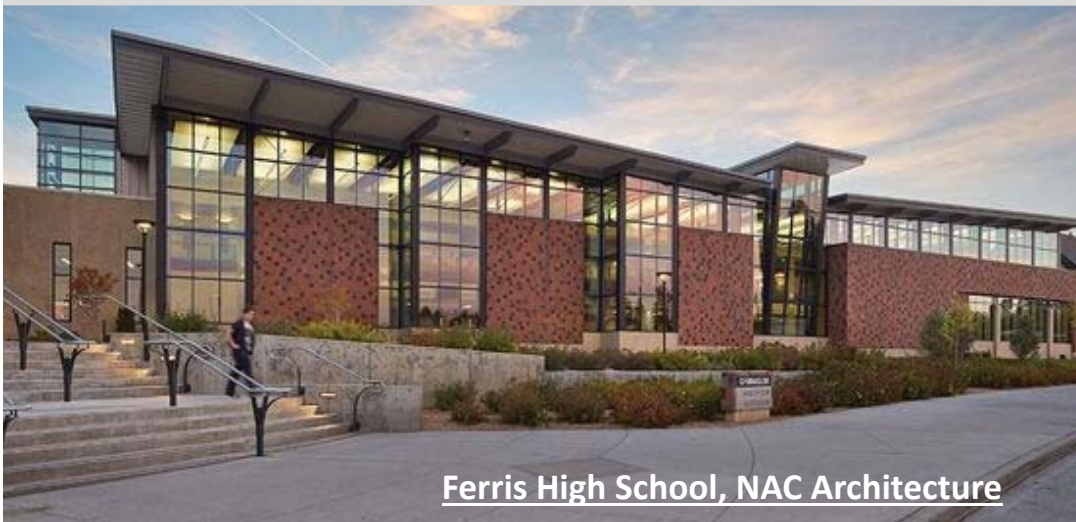
# PRECEDENTS | Building Styles and Materials



Harrison High School



Lititz Elementary, RLPS Architects



Ferris High School, NAC Architecture

Williamstown Elementary School,  
Margo Jones Architects



# PRECEDENTS | Building Styles and Materials



Cherry Road Elementary School, Ashley McGraw



Bancroft Elementary School, SMMA Architects



Cincinnati Country Day School,  
Greg Lynn Form



Northside Elementary School,  
Timmons Group

# PRECEDENTS | Building Styles and Materials





# PRECEDENTS | Building Styles and Materials



Knowlton School of Architecture, Mack Scogin  
Merril Elam Architects.



Mouriz School, Atelier Nuno Lacerda Lopes



Williams College Children's Center,  
D. W. Arthur Associates



R W Kern Center, Bruner/Cott & Associates



*Bruner / Cott Architects and Planners*



Williams College, Hollander and Schapiro Hall,  
Bohlin Cywinski Jackson



## SCHEDULE



<b>SEPTEMBER 11<sup>TH</sup></b>	School Building Committee Meeting
<b>SEPTEMBER 25<sup>TH</sup></b>	School Building Committee Meeting
<b>OCTOBER 9<sup>TH</sup></b>	School Building Committee Meeting
<b>OCTOBER 23<sup>RD</sup></b>	School Building Committee Meeting
<b>NOVEMBER 9<sup>TH</sup></b>	Schematic Design MSBA Submission
<b>DECEMBER 13<sup>TH</sup></b>	MSBA Board Meeting Project Scope & Budget
<b>APRIL</b>	2018 Spring Town Meeting

**NOTE:** Schematic Design Submission could be delayed two months, if necessary

# Thank You