



Building Committee Presentation:  
Tisbury Elementary School



September 11, 2017



## 1. Discussion of Options:

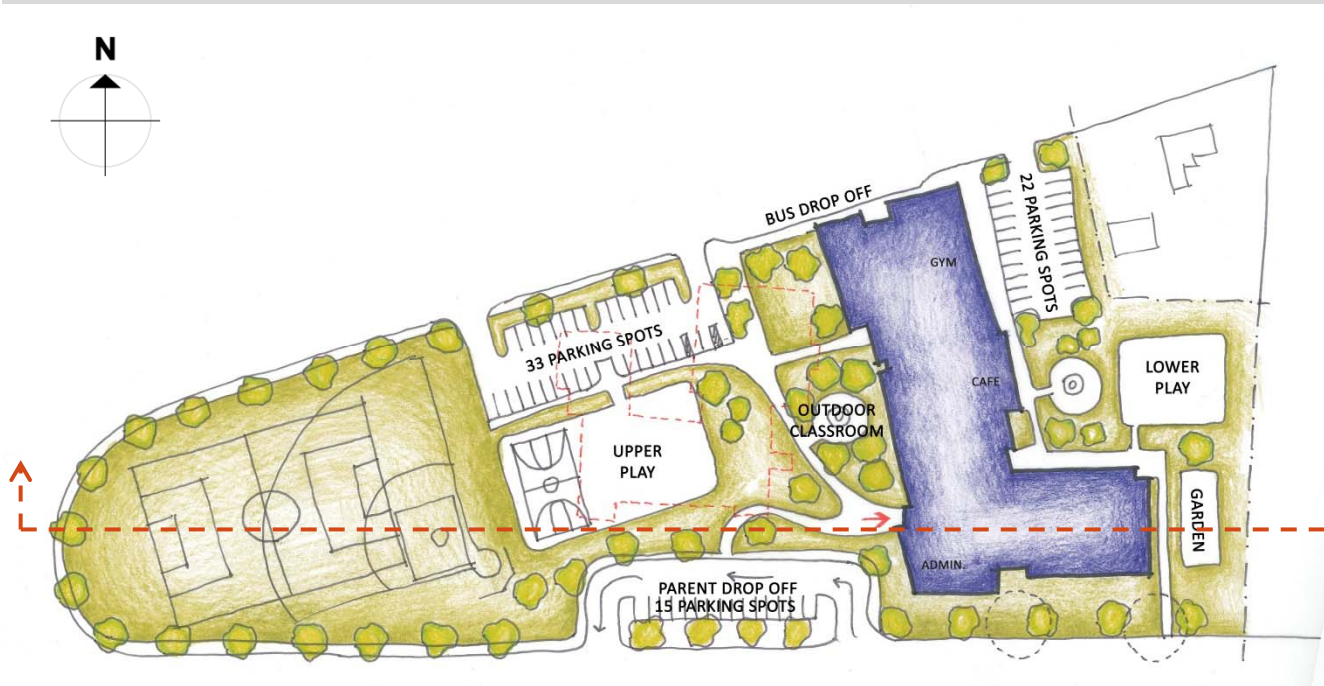
- i. **Option 3B** – 3-story school, existing building to remain during construction
- ii. **Option 3C** – 3-story school, existing gym removed prior to construction
- iii. **Option 3D** – 3-story school, existing building removed prior to construction

## 2. Discussion of Working Groups

## 3. Project Schedule

# OPTION 3B |

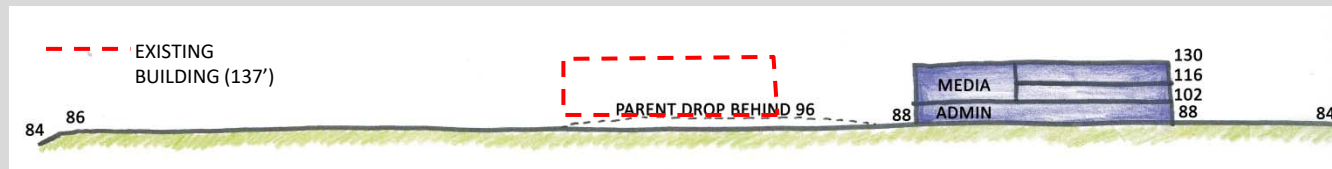
## NEW 3-STORY SCHOOL, EXT'G BUILDING TO REMAIN SITE PLAN, SITE SECTION, CONSIDERATIONS



### CONSIDERATIONS

- Entire existing building to remain during construction
- Separated bus & parents drop-off
- Lower grade play area close to classrooms and protected at rear of building
- Reduces height by using topography (130')
- Potential to screen service areas from view
- Adequate setback from W. William – 30'+/-
- Minimal setback to Spring – 9'+/-
- Adequate planting buffers to east residential lots
- Improves pedestrian and bike access - accessibility
- Centralizes community recreation areas – visible
- Protects wicks
- Visual impact of parking is reduced by smaller lots

### SITE PLAN



### SITE SECTION

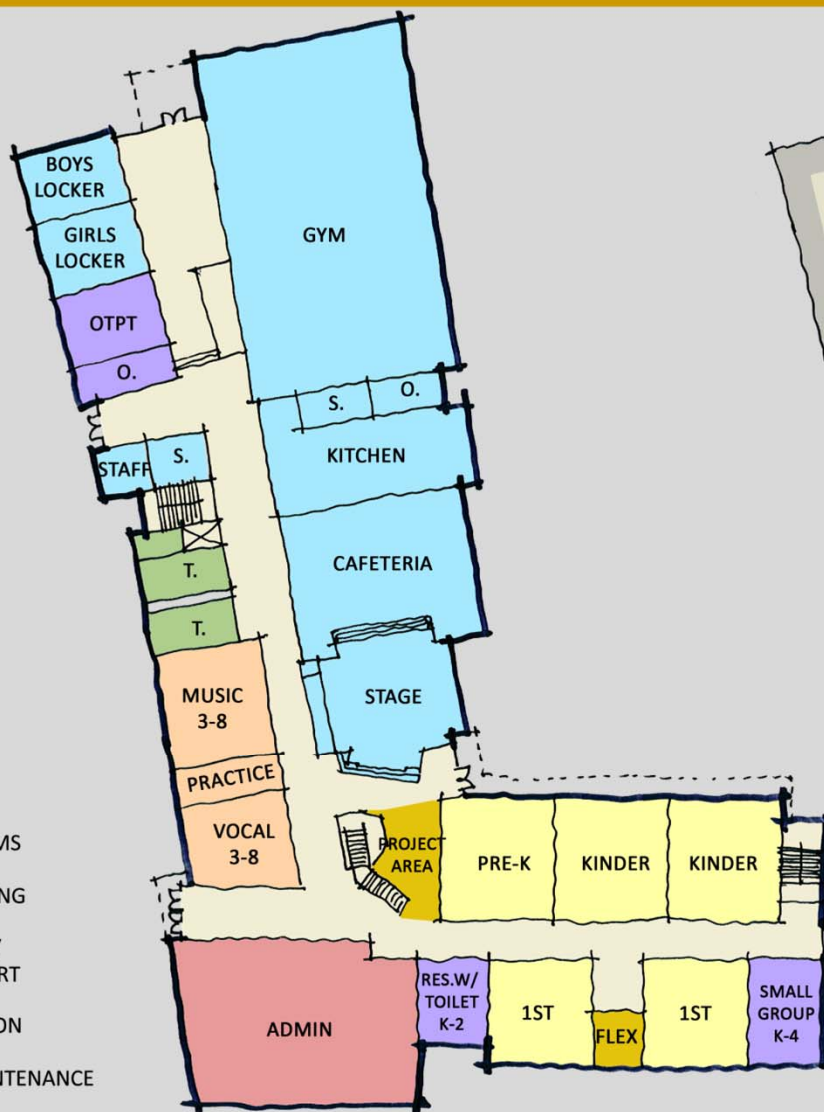
# OPTION 3B |

## NEW 3-STORY SCHOOL, EXT'G BUILDING TO REMAIN FLOOR PLANS

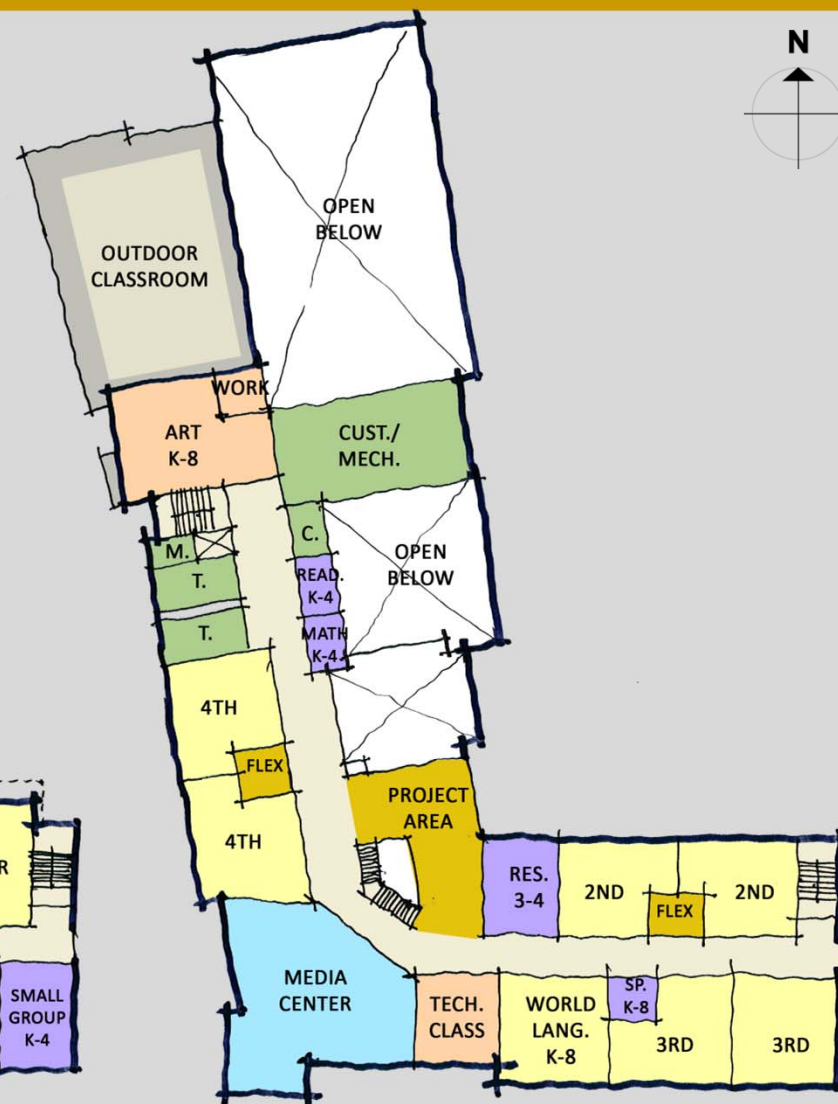


### LEGEND

- CLASSROOMS
- BREAKOUT
- SHARED PROGRAMS
- MEDIA/GYM/DINING
- ADMINISTRATIVE/  
TEACHERS SUPPORT
- SPECIAL EDUCATION
- CUSTODIAL /MAINTENANCE



**FIRST FLOOR PLAN**



**SECOND FLOOR PLAN**

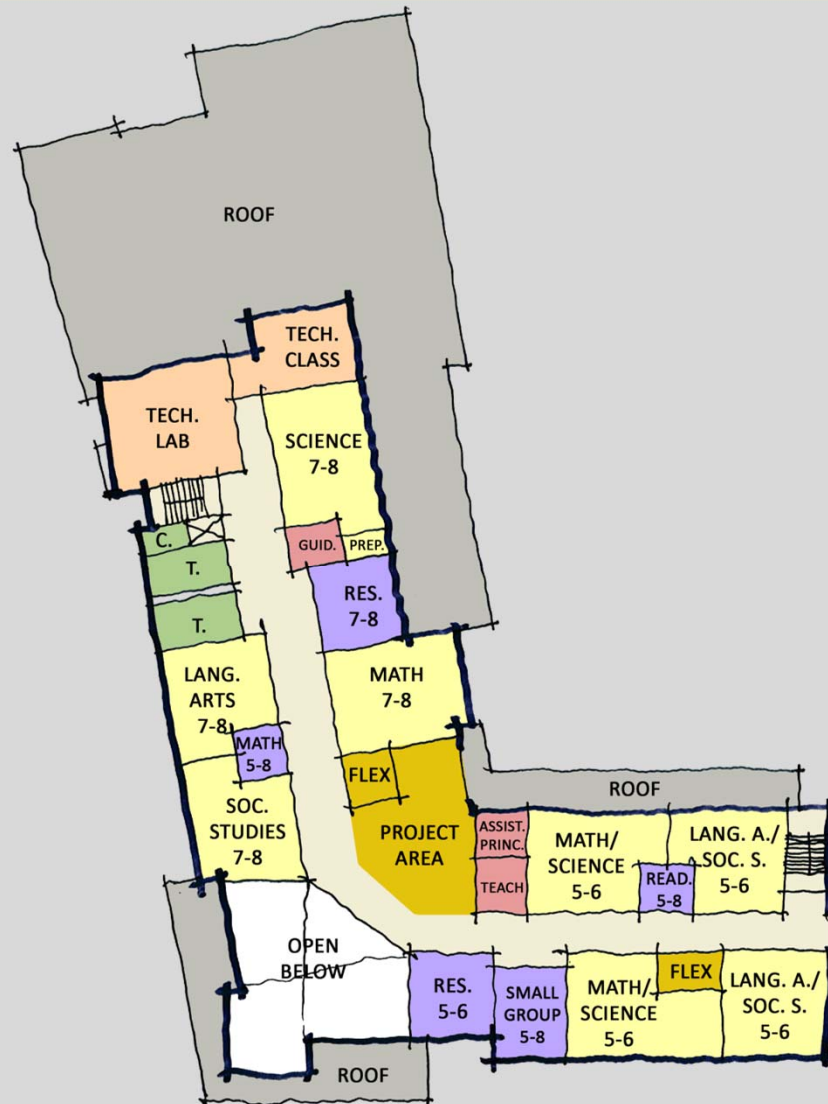
# OPTION 3B |

## NEW 3-STORY SCHOOL, EXT'G BUILDING TO REMAIN FLOOR PLANS



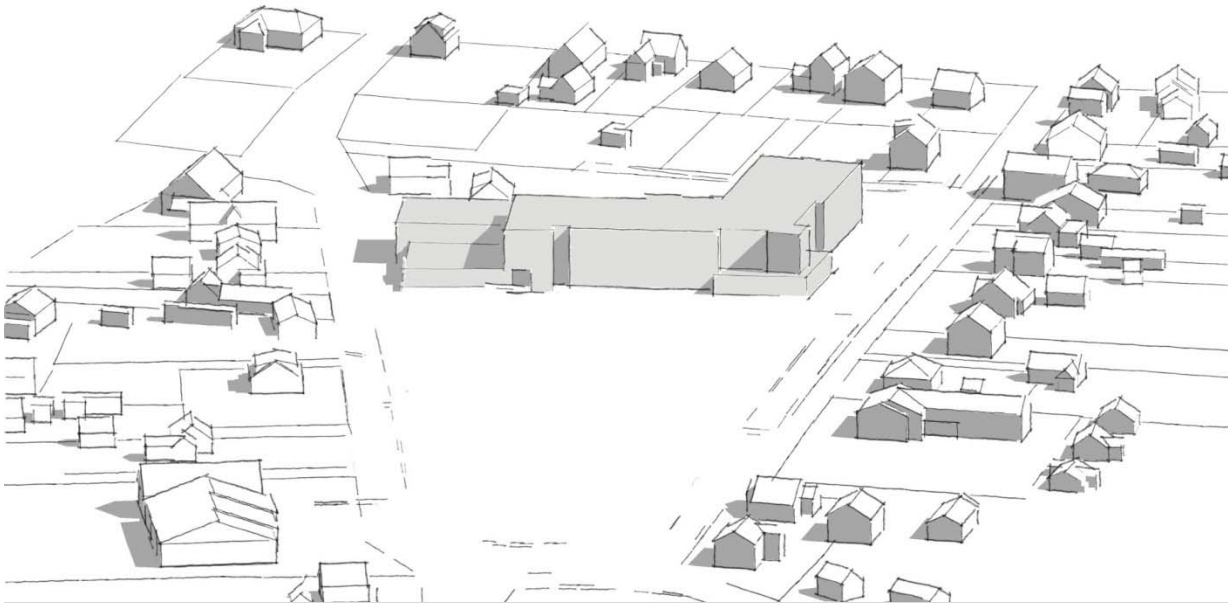
### LEGEND

- CLASSROOMS
- BREAKOUT
- SHARED PROGRAMS
- MEDIA/GYM/DINING
- ADMINISTRATIVE/  
TEACHERS SUPPORT
- SPECIAL EDUCATION
- CUSTODIAL /MAINTENANCE

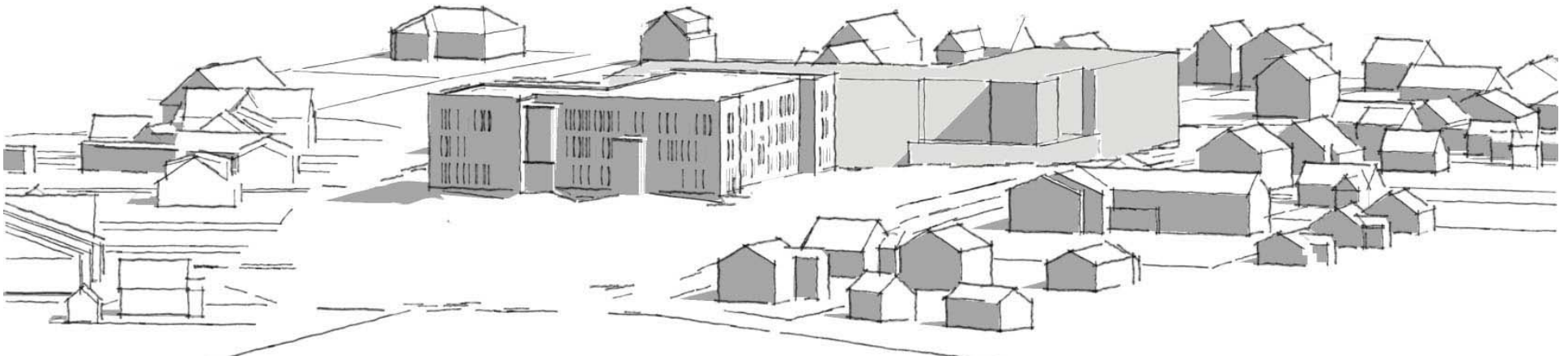


**THIRD FLOOR PLAN**

OPTION 3B | MASSING



BIRD'S EYE VIEW

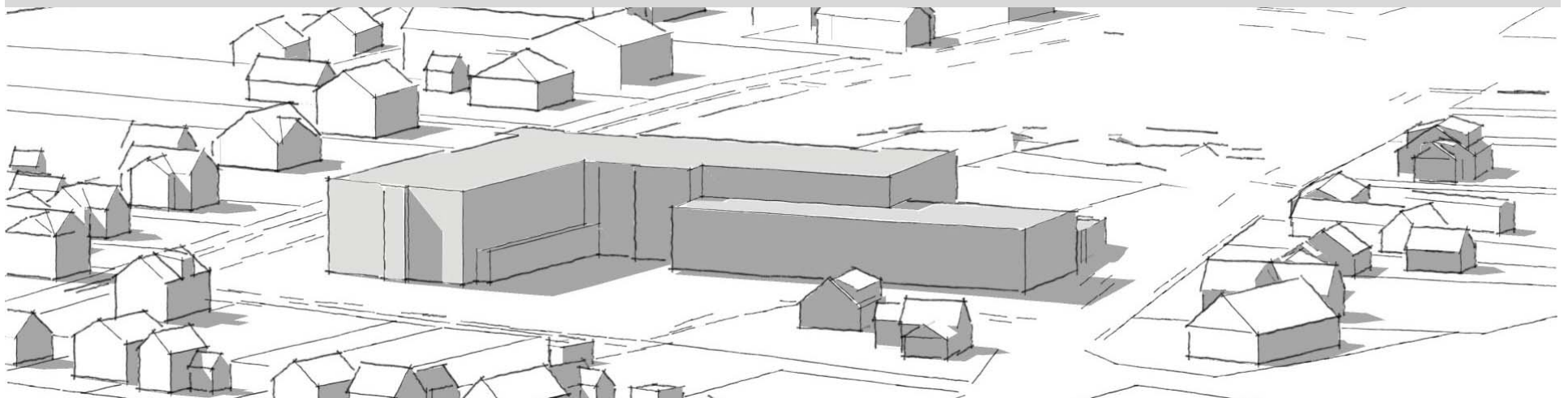


EXISTING SCHOOL COMPARED TO NEW SCHOOL

OPTION 3B | MASSING



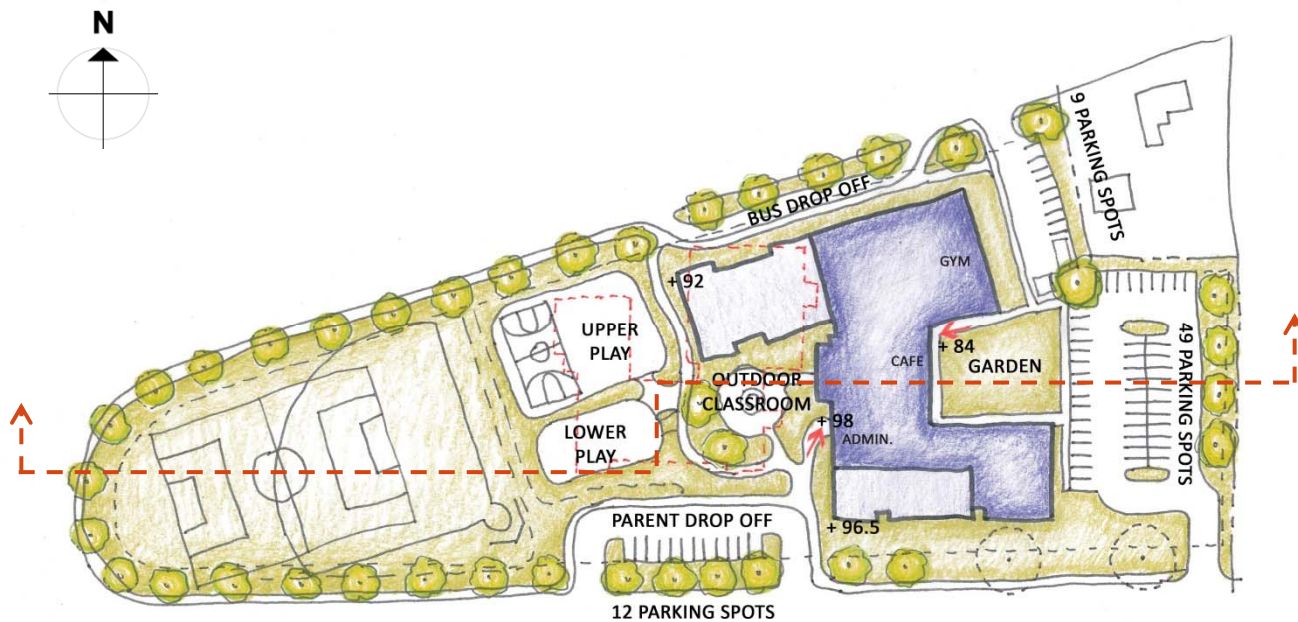
NORTH WEST VIEW



EAST VIEW

# OPTION 3C |

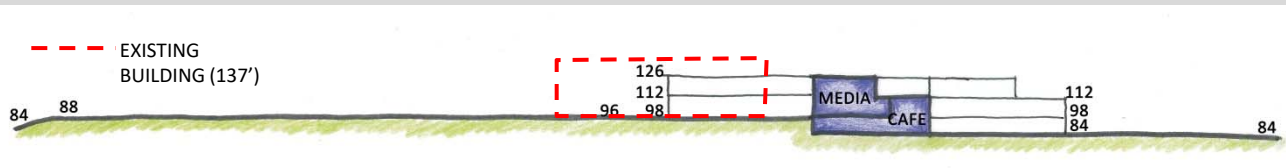
## NEW 3-STORY SCHOOL, EXT'G GYM REMOVED SITE PLAN, SITE SECTION, CONSIDERATIONS



### CONSIDERATIONS

- Requires gym demolition first
- Separate bus & parent drop-off
- Consolidates parking on one side of site
- Increases parking adjacent to residential, but provides buffers
- Visual impact of parking reduced with buffers and placement at now elevation on site
- Lower grade playgrounds not as close to classrooms.
- Reduces height by using topography (126')
- Potential to screen service areas
- Adequate setback from W. William - 50'+/-
- Adequate setback to Spring - 45'+/-
- Improves pedestrian and bike access – overall accessibility
- Segregates public use and school uses vertically
- Centralized community recreation areas
- Protects wicks

### SITE PLAN



### SITE SECTION



# OPTION 3C |

## NEW 3-STORY SCHOOL, EXT'G GYM REMOVED FLOOR PLANS



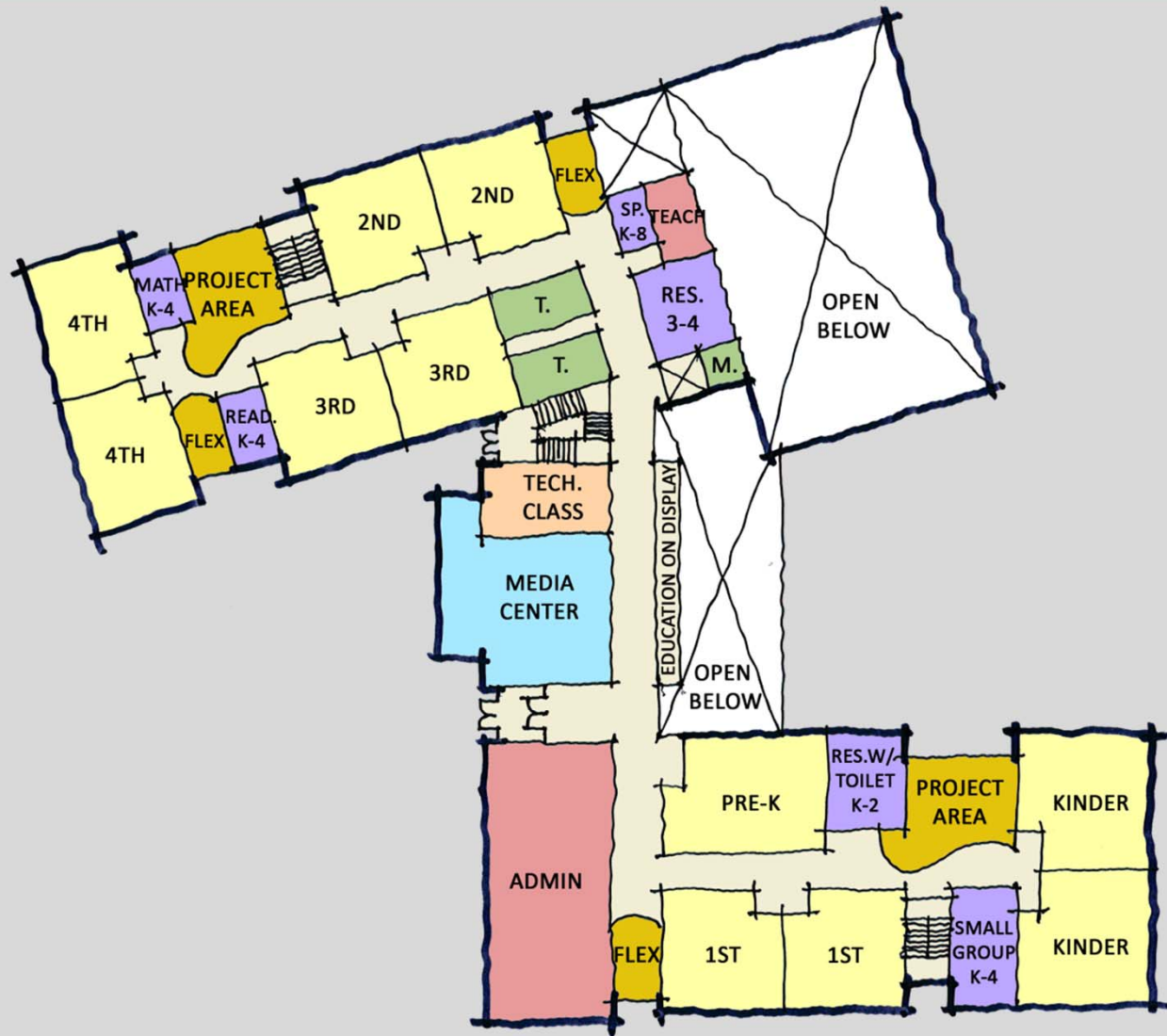
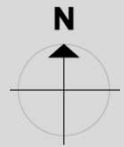
### LEGEND

- CLASSROOMS
- BREAKOUT
- SHARED PROGRAMS
- MEDIA/GYM/DINING
- ADMINISTRATIVE/  
TEACHERS SUPPORT
- SPECIAL EDUCATION
- CUSTODIAL /MAINTENANCE

FIRST FLOOR PLAN

# OPTION 3C |

## NEW 3-STORY SCHOOL, EXT'G GYM REMOVED FLOOR PLANS



**SECOND FLOOR PLAN**

- LEGEND**
- CLASSROOMS
  - BREAKOUT
  - SHARED PROGRAMS
  - MEDIA/GYM/DINING
  - ADMINISTRATIVE/  
TEACHERS SUPPORT
  - SPECIAL EDUCATION
  - CUSTODIAL /MAINTENANCE

# OPTION 3C |

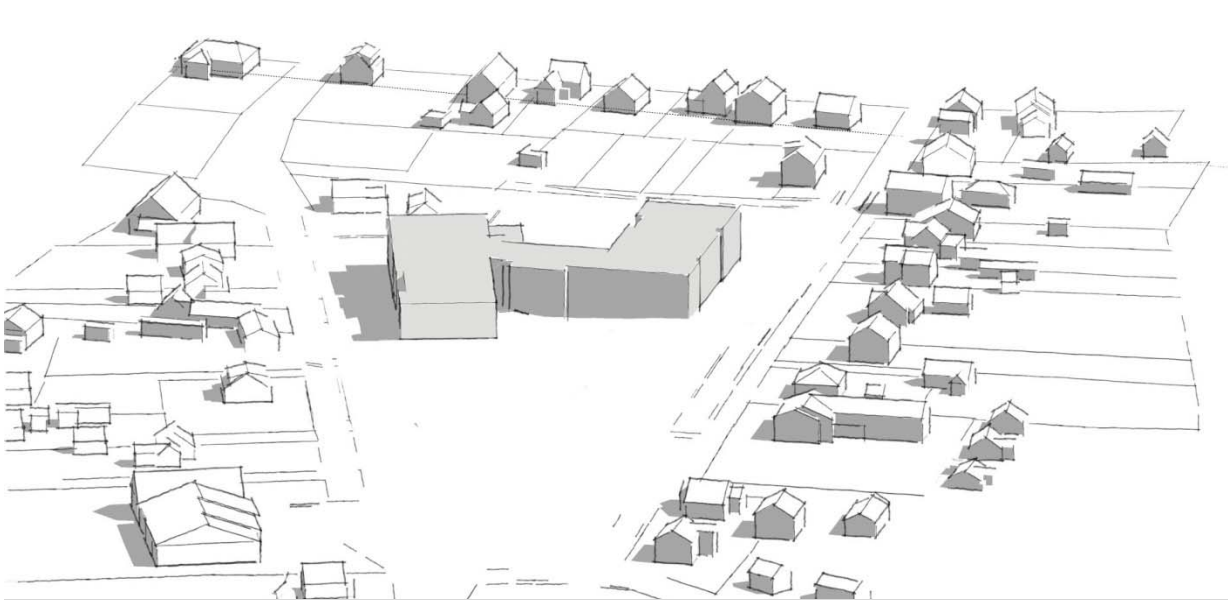
## NEW 3-STORY SCHOOL, EXT'G GYM REMOVED FLOOR PLANS



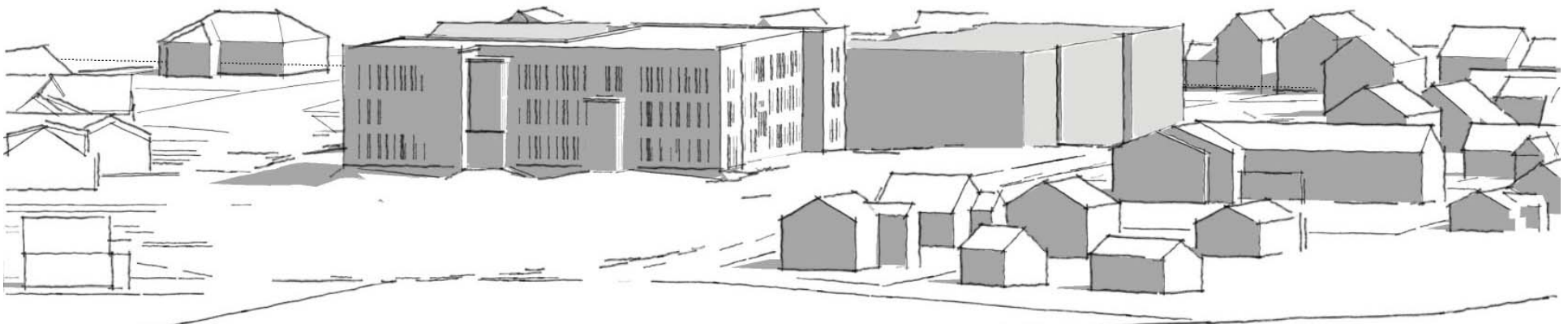
- LEGEND**
- CLASSROOMS
  - BREAKOUT
  - SHARED PROGRAMS
  - MEDIA/GYM/DINING
  - ADMINISTRATIVE/  
TEACHERS SUPPORT
  - SPECIAL EDUCATION
  - CUSTODIAL /MAINTENANCE

**THIRD FLOOR PLAN**

OPTION 3C | MASSING

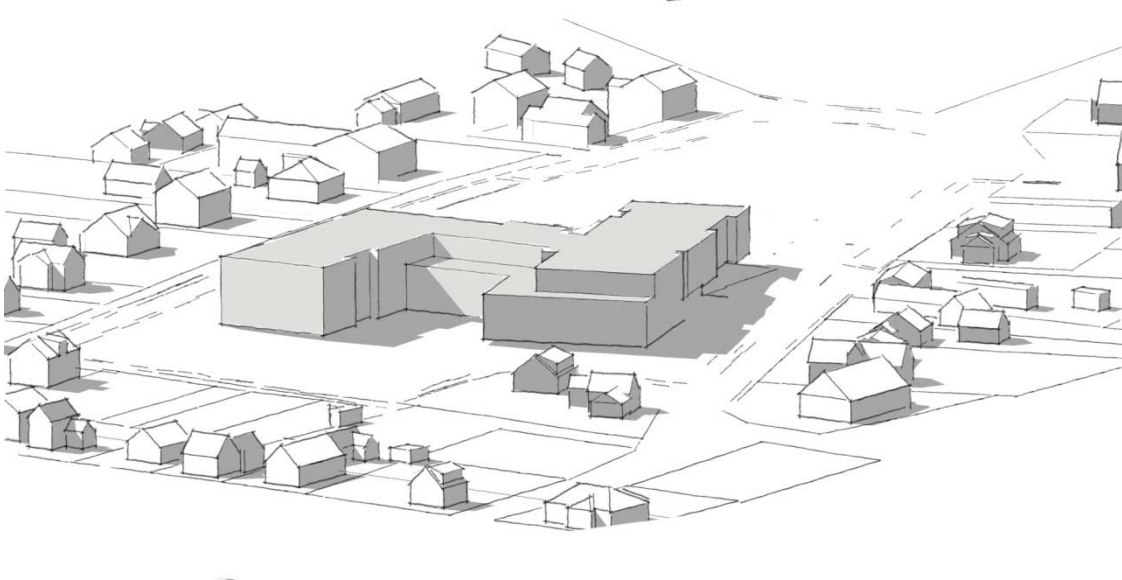


BIRD'S EYE VIEW

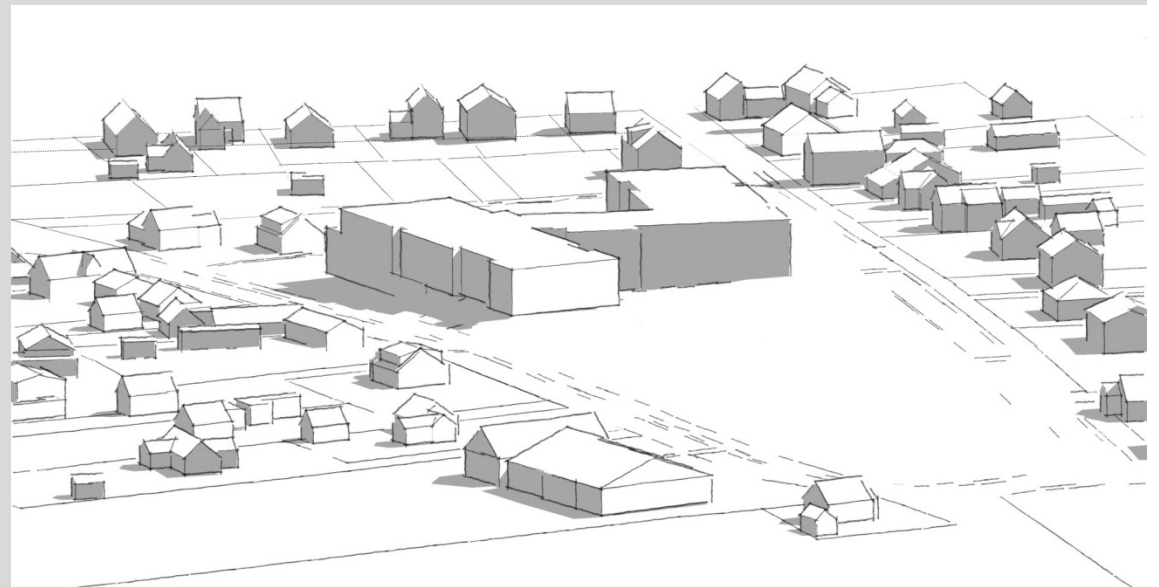


EXISTING SCHOOL COMPARED TO NEW SCHOOL

OPTION 3C | MASSING

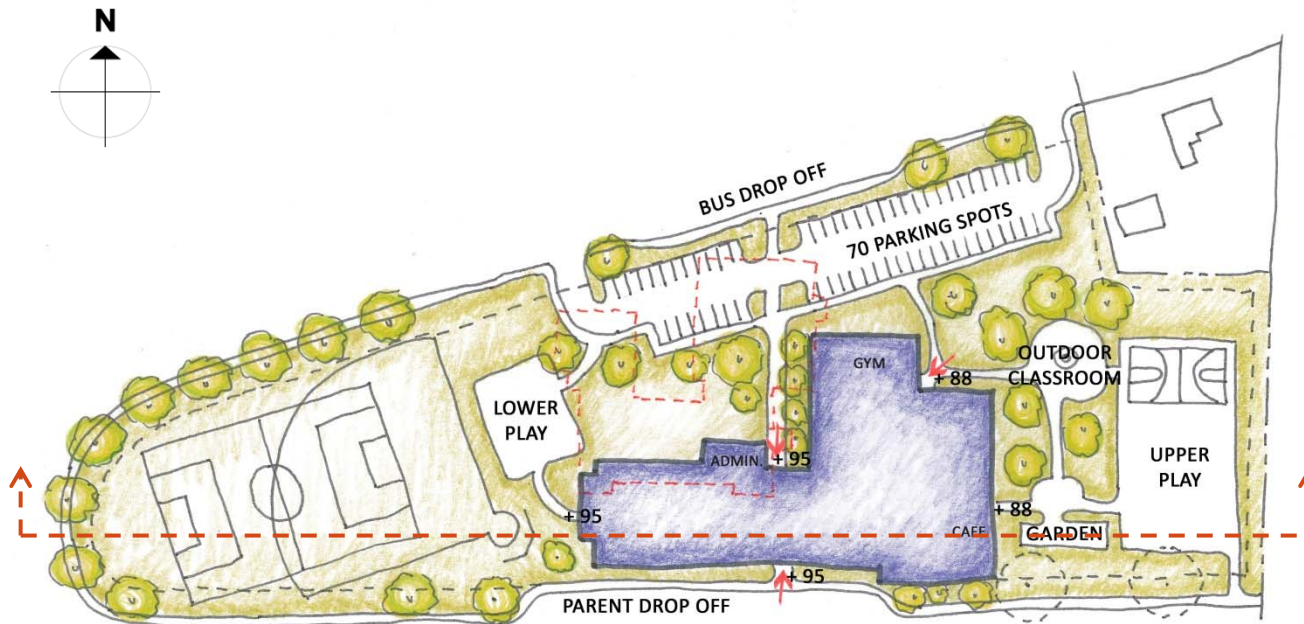


EAST VIEW



NORTH WEST VIEW

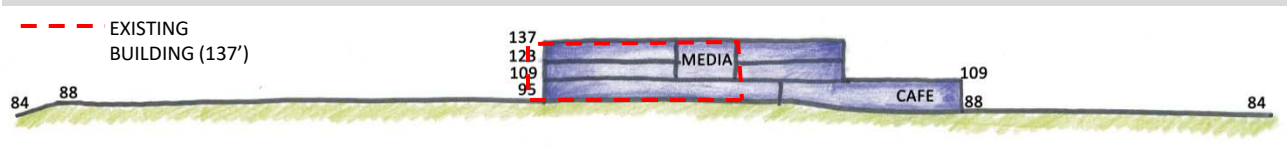
# OPTION 3D.1 | NEW 3-STORY SCHOOL, EXT'G BUILDING REMOVED SITE PLAN, SITE SECTION, CONSIDERATIONS



## CONSIDERATIONS

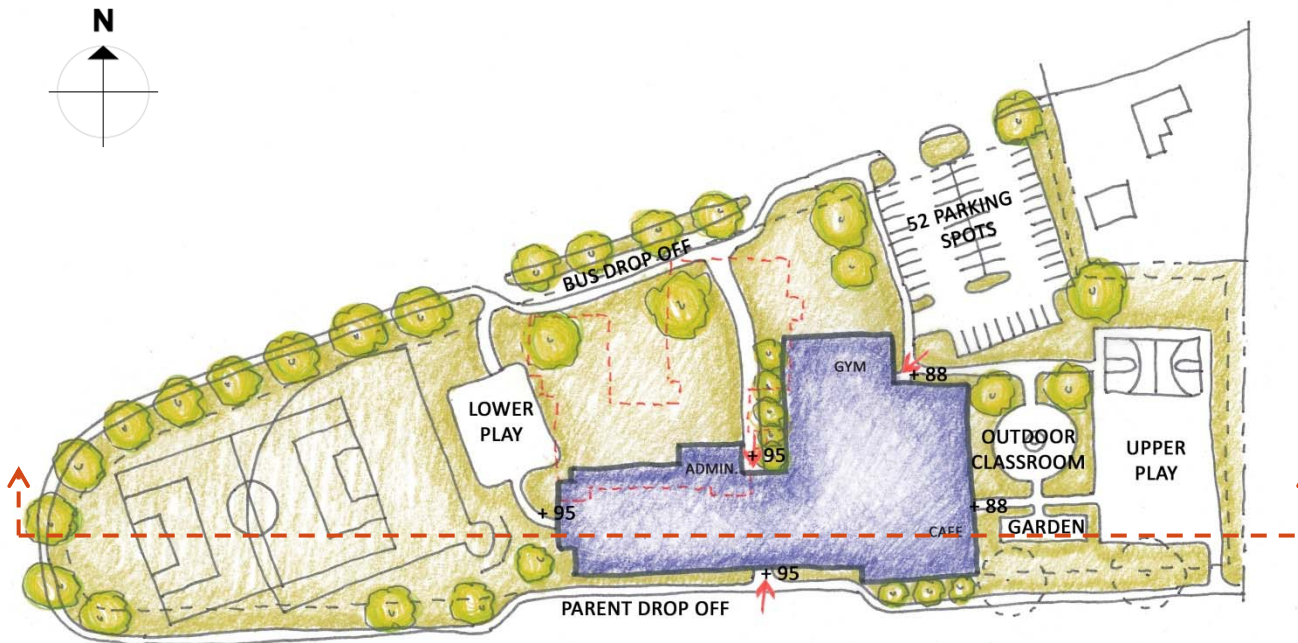
- Requires full building demolition first
- Main entrance north facing – prevailing windward
- Lower grade play area close to classrooms
- Separated bus and parent drop off
- Limited queuing for parent drop off
- Extends construction duration.
- Tallest overall, (137')
- Difficult to screen service areas
- Limited access to kitchen/café for deliveries
- Reduced set back to W. William St.
- Adequate set back to Spring St.
- Greatest building set back from east residential properties
- Divides pedestrian and bicycle zones
- Divides school and community recreation uses
- Protects wicks
- Consolidates parking along length of Spring Street – greatest visual impact

## SITE PLAN



## SITE SECTION

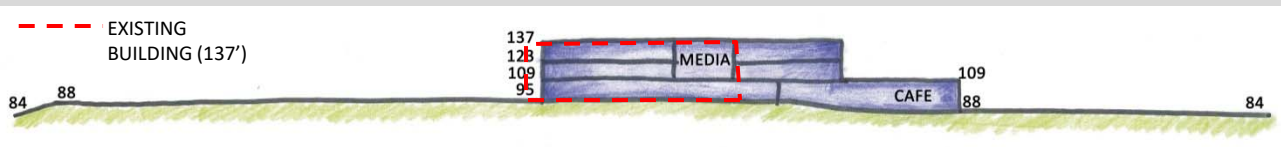
# OPTION 3D.2 | NEW 3-STORY SCHOOL, EXT'G BUILDING REMOVED SITE PLAN, SITE SECTION, CONSIDERATIONS



## CONSIDERATIONS

- Requires full building demolition first
- Main entrance north facing – prevailing windward
- Lower grade play area close to classrooms
- Separated bus and parent drop off
- Limited queuing for parent drop off
- Extends construction duration.
- Tallest overall, (137')
- Difficult to screen service areas
- Limited access to kitchen/café for deliveries
- Reduced set back to W. William St.
- Adequate set back to Spring St.
- Greatest building set back from east residential properties
- Divides pedestrian and bicycle zones
- Divides school and community recreation uses
- Protects wicks
- Visual impact of parking similar to existing – familiar
- Requires remote site for parking

## SITE PLAN



## SITE SECTION

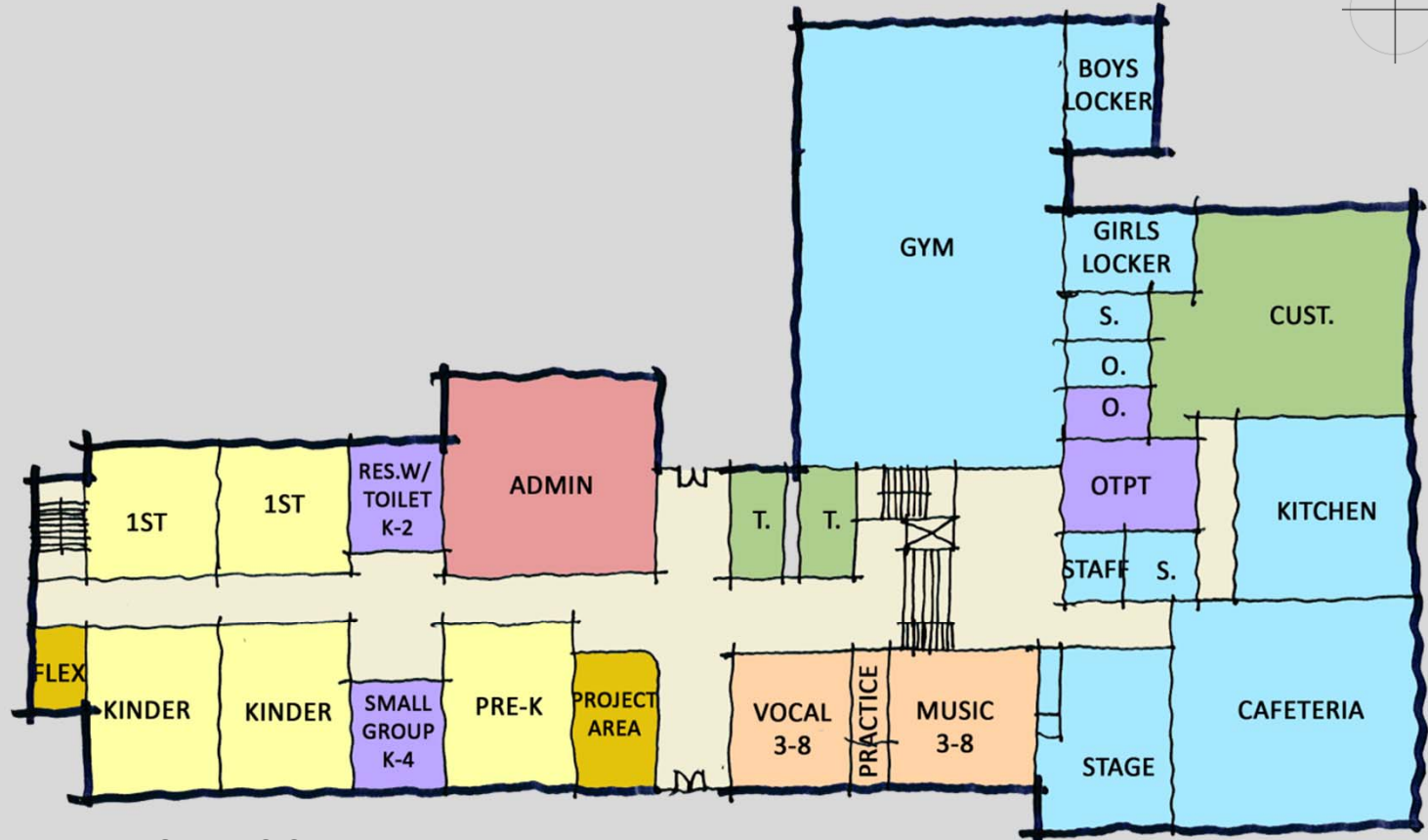
# OPTION 3D |

NEW 3-STORY SCHOOL LOCATED, EXT'G BUILDING REMOVED  
FLOOR PLANS



LEGEND

- CLASSROOMS
- BREAKOUT
- SHARED PROGRAMS
- MEDIA/GYM/DINING
- ADMINISTRATIVE/  
TEACHERS SUPPORT
- SPECIAL EDUCATION
- CUSTODIAL /MAINTENANCE



FIRST FLOOR PLAN



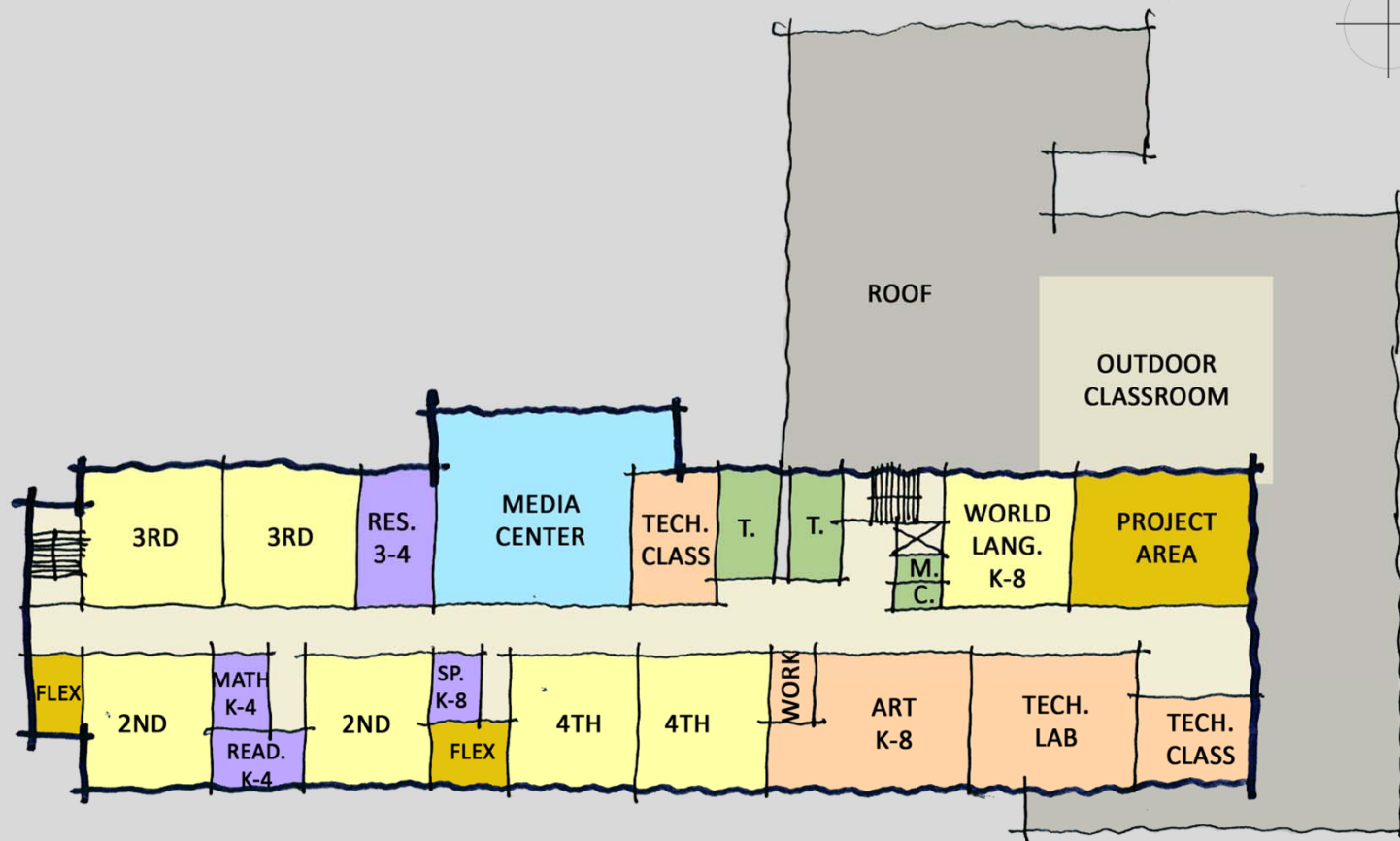
# OPTION 3D |

## NEW 3-STORY SCHOOL, EXT'G BUILDING REMOVED FLOOR PLANS



### LEGEND

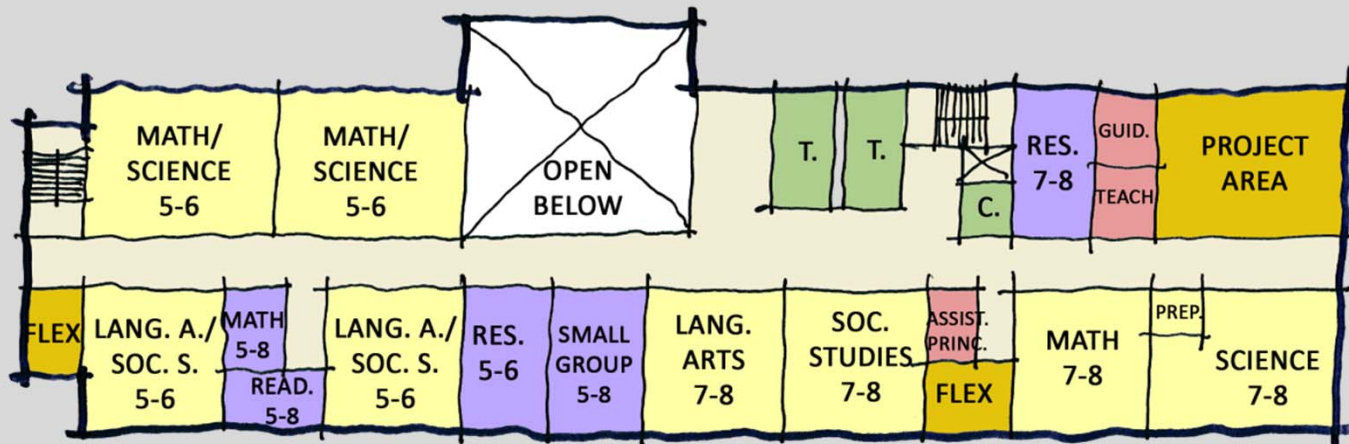
- CLASSROOMS
- BREAKOUT
- SHARED PROGRAMS
- MEDIA/GYM/DINING
- ADMINISTRATIVE/  
TEACHERS SUPPORT
- SPECIAL EDUCATION
- CUSTODIAL /MAINTENANCE



**SECOND FLOOR PLAN**

# OPTION 3D |

## NEW 3-STORY SCHOOL, EXT'G BUILDING REMOVED FLOOR PLANS

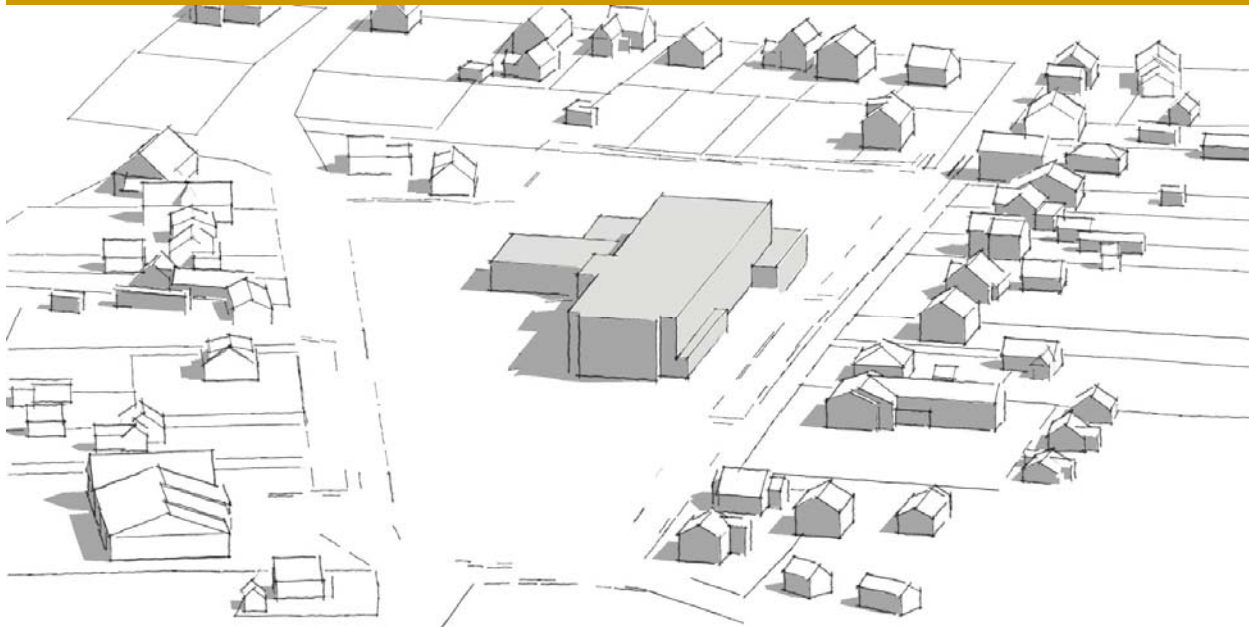


THIRD FLOOR PLAN

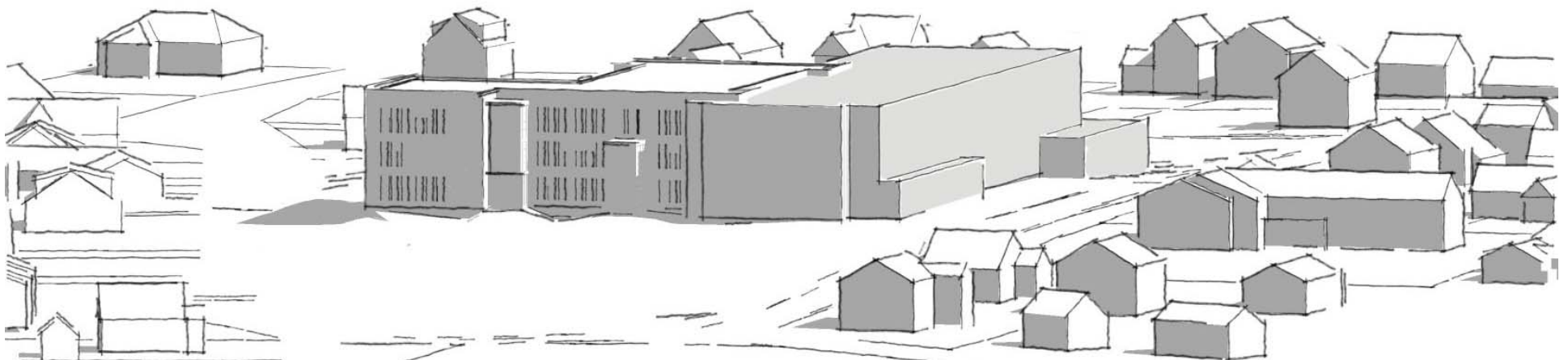
LEGEND

- CLASSROOMS
- BREAKOUT
- SHARED PROGRAMS
- MEDIA/GYM/DINING
- ADMINISTRATIVE/TEACHERS SUPPORT
- SPECIAL EDUCATION
- CUSTODIAL /MAINTENANCE

OPTION 3D | MASSING

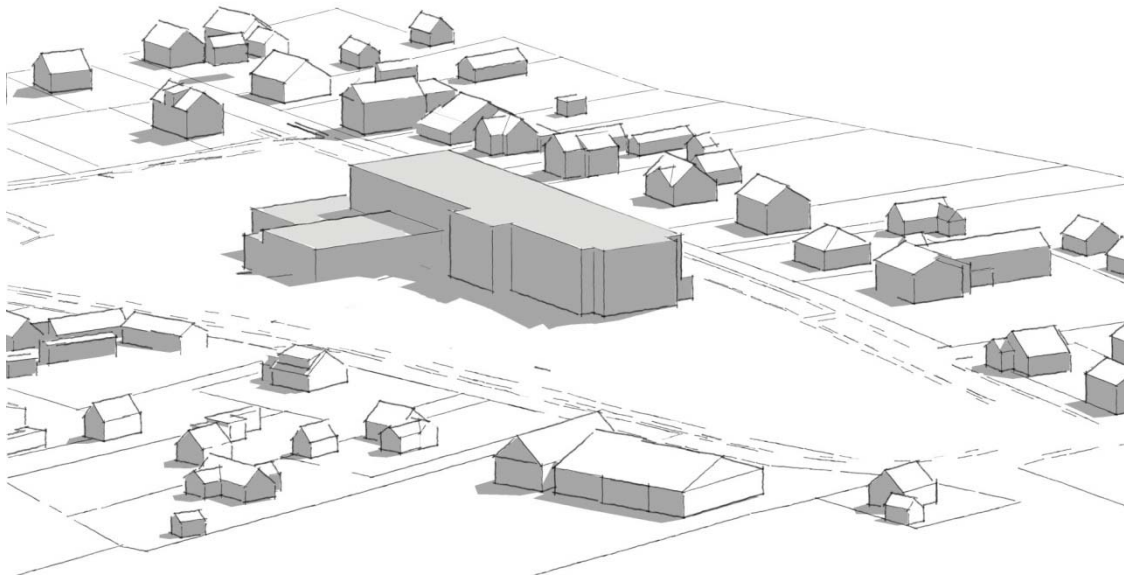


BIRD'S EYE VIEW

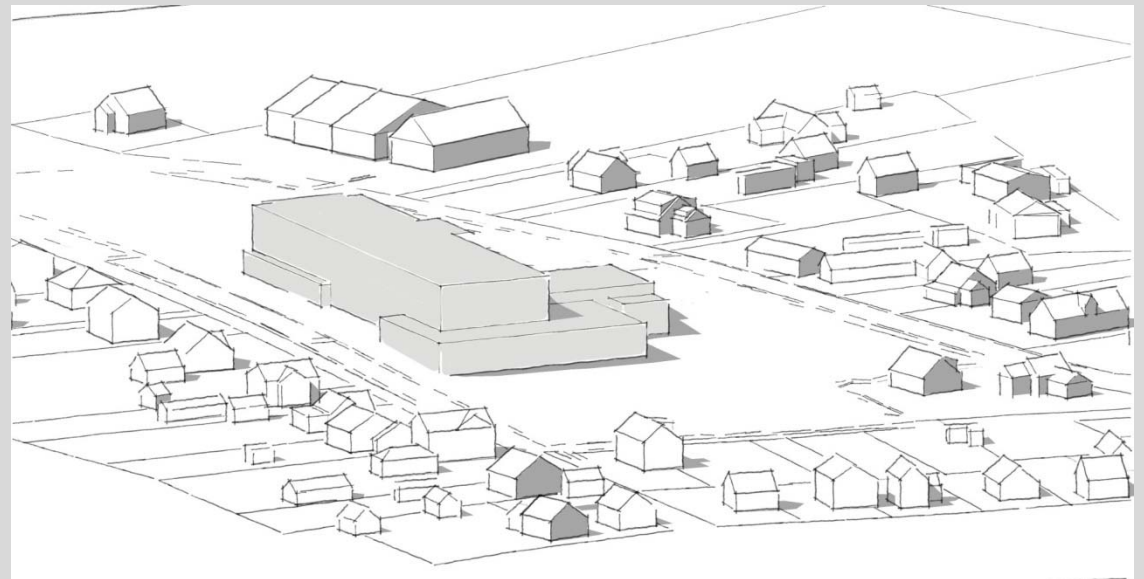


EXISTING SCHOOL COMPARED TO NEW SCHOOL

OPTION 3D | MASSING



NORTH WEST VIEW



SOUTH EAST VIEW

### **SECURITY**

---

Security needs both for school and community uses, building and site

### **SUSTAINABILITY**

---

Sustainable opportunities and goals in relation to Greener Communities Program and LEED / CHPS

### **COMMUNICATIONS**

---

Educational technology and audio visual requirements, school and community

### **OUTDOOR FACILITIES**

---

Outdoor school and community programmatic needs. Should include school physical ed., staff

### **MATERIALS / MAINTENANCE**

Interior and exterior finish materials; sustainability, durability, maintenance, cost

---

# Thank You

## SCHEDULE



<b>SEPTEMBER 18<sup>TH</sup></b>	<b>Working Group – Outdoor Facilities Public Presentation</b>
<b>SEPTEMBER 25<sup>TH</sup></b>	<b>School Building Committee Meeting (LEED vs CHPS and Design Update)</b>
<b>SEPTEMBER 26<sup>TH</sup></b>	<b>Sustainability Design Working Group</b>
<b>SEPTEMBER 28<sup>TH</sup></b>	<b>School Tours (Dearborn School and Hannigan School)</b>
<b>OCTOBER 2<sup>ND</sup></b>	<b>Working Group - Security</b>
<b>OCTOBER 5<sup>TH</sup> – 6<sup>TH</sup></b>	<b>Staff/Room Data Meetings</b>
<b>OCTOBER 10<sup>TH</sup></b>	<b>School Building Committee Meeting</b>
<b>OCTOBER 23<sup>RD</sup></b>	<b>School Building Committee Meeting</b>
<b>JANUARY 3<sup>RD</sup></b>	<b>MSBA Schematic Design Submission</b>

# Thank You