



Building Committee Presentation:
Tisbury Elementary School



NOVEMBER 27, 2017

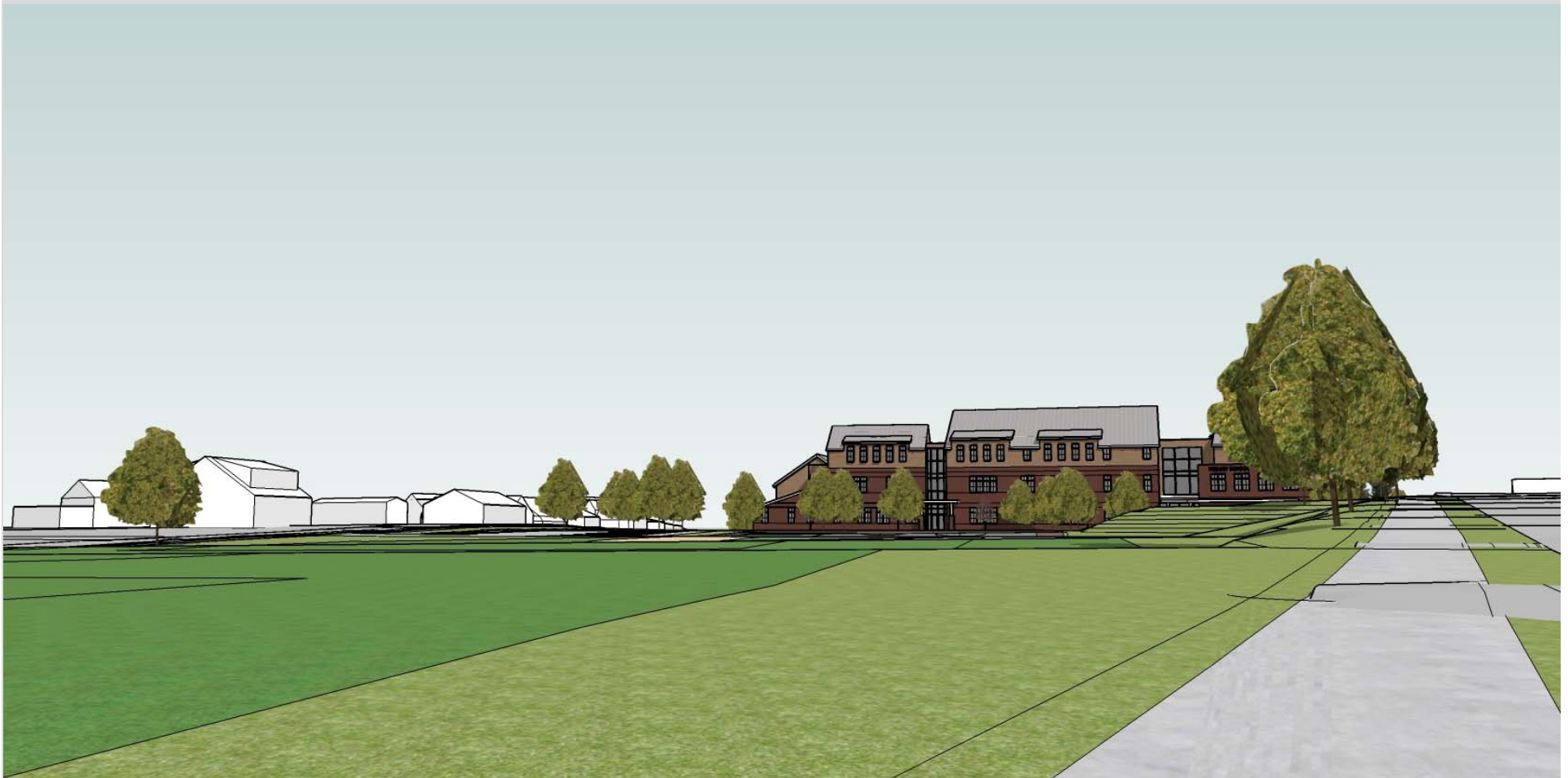
- 1. Design Review**
- 2. Exterior Materials and Precedents**
- 3. Construction Procurement**

BUILDING MASSING | OPTION B.2 REVISED



BIRD'S EYE VIEW

BUILDING MASSING | OPTION B.2 REVISED



VIEW DOWN WEST WILLIAMS STREET LOOKING BACK AT SCHOOL

BUILDING MASSING | OPTION B.2 REVISED



VIEW DOWN SPRING STREET LOOKING BACK AT SCHOOL

BUILDING MASSING | OPTION B.2 REVISED



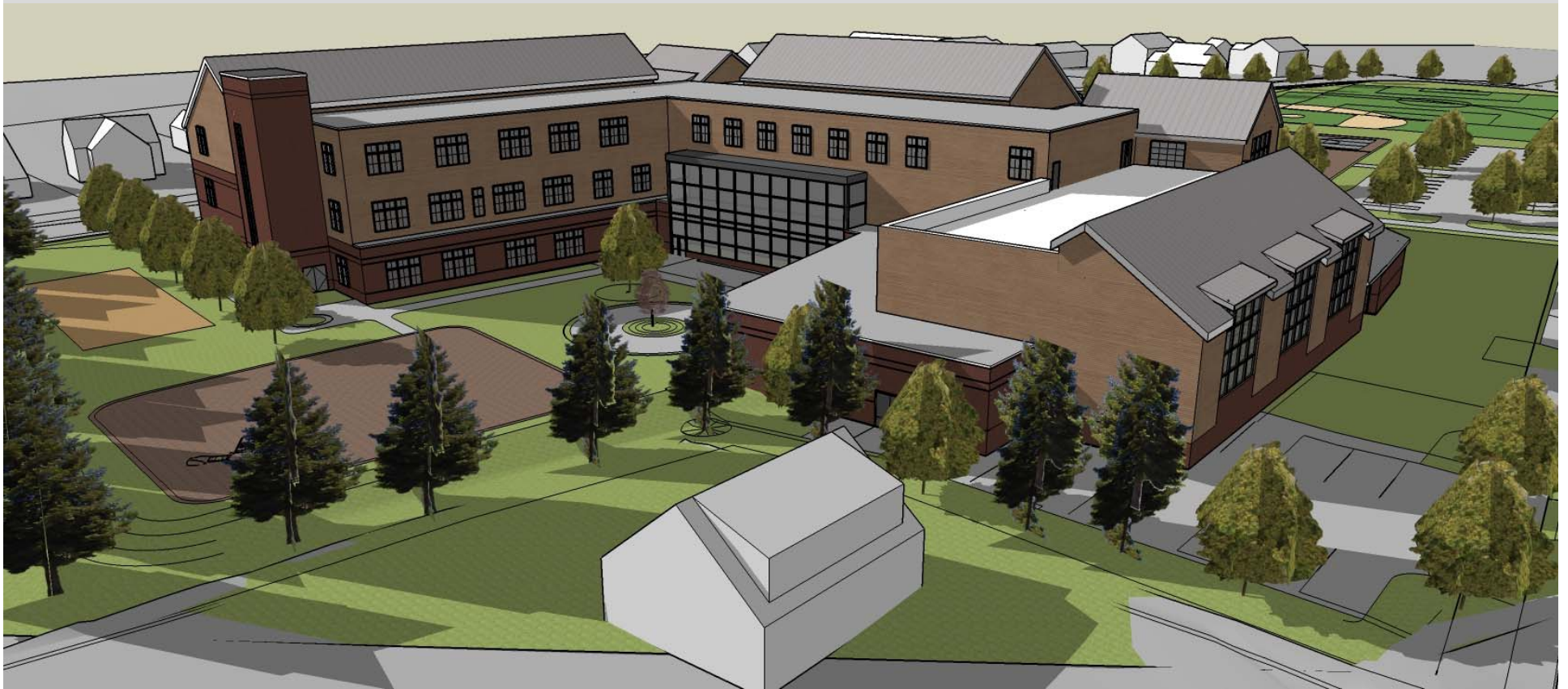
SOUTH WEST OVERVIEW

BUILDING MASSING | OPTION B.2 REVISED



NORTH WEST OVERVIEW

BUILDING MASSING | OPTION B.2 REVISED



NORTH EAST OVERVIEW

BUILDING MASSING | OPTION B.2 REVISED



WEST VIEWS

BUILDING MASSING | OPTION B.2 REVISED



NORTH VIEW



EAST VIEW

BUILDING MASSING | OPTION B.2 REVISED



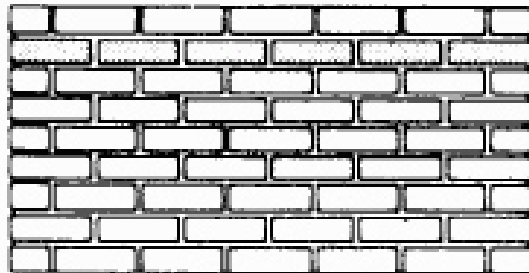
BUILDING MASSING | OPTION B.2 REVISED



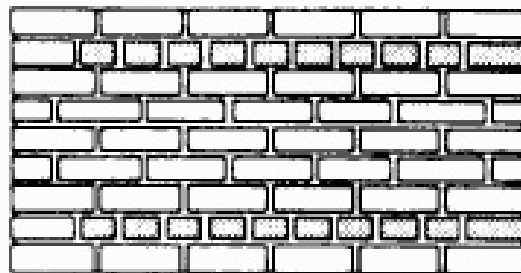
BUILDING MASSING | OPTION B.2 REVISED WITH PALLADIAN WINDOW



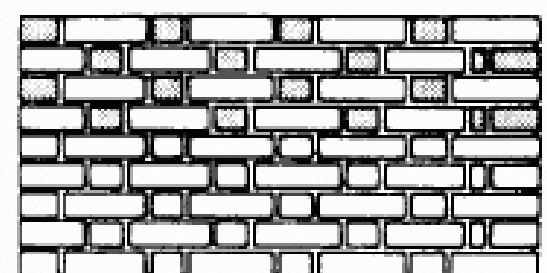
BRICK PATTERNS



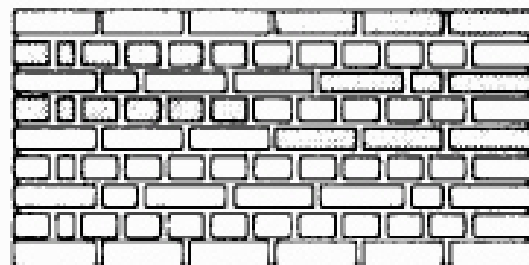
RUNNING



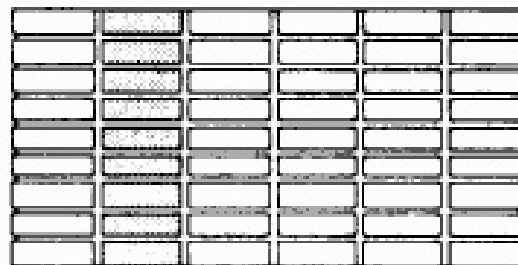
COMMON OR AMERICAN



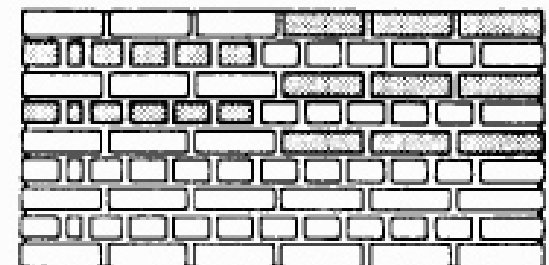
FLEMISH



ENGLISH

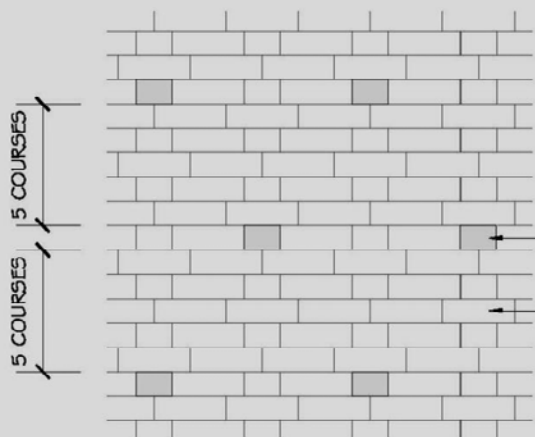
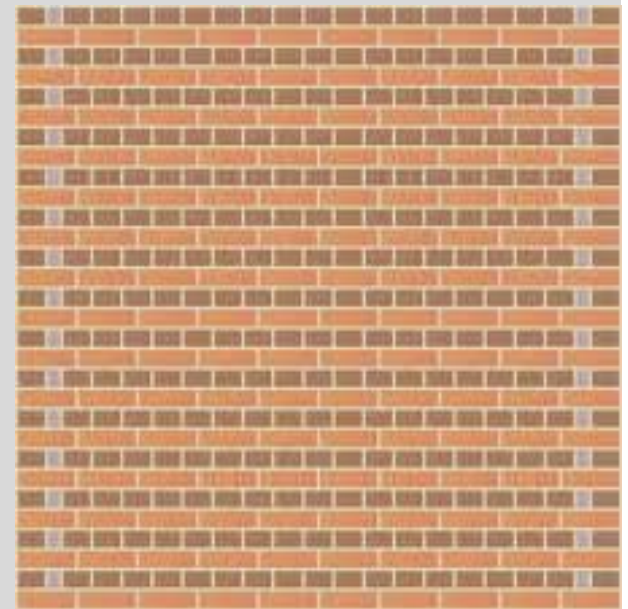
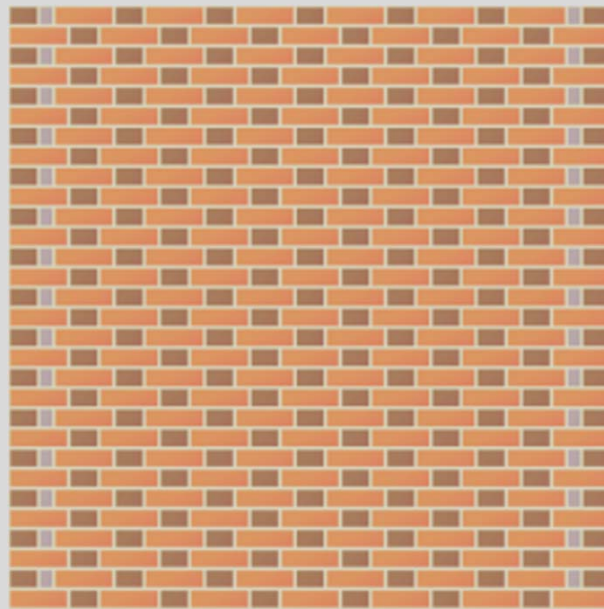
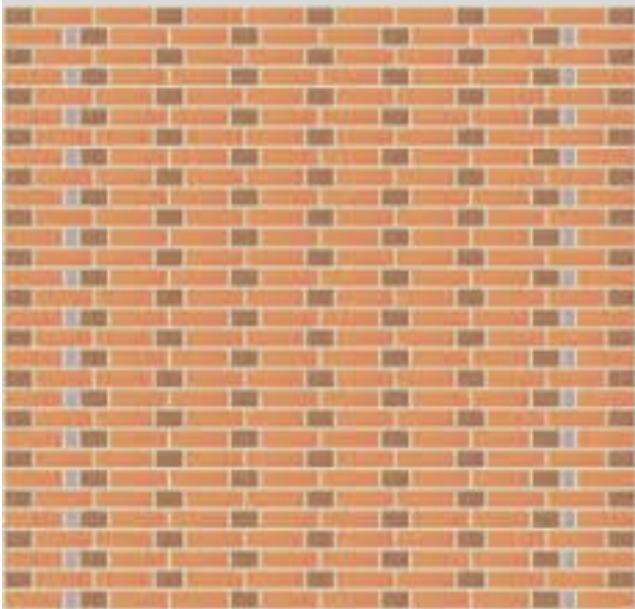


STACK



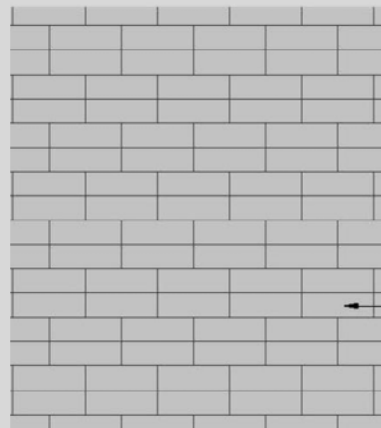
ENGLISH CROSS OR DUTCH

BRICK PATTERNS

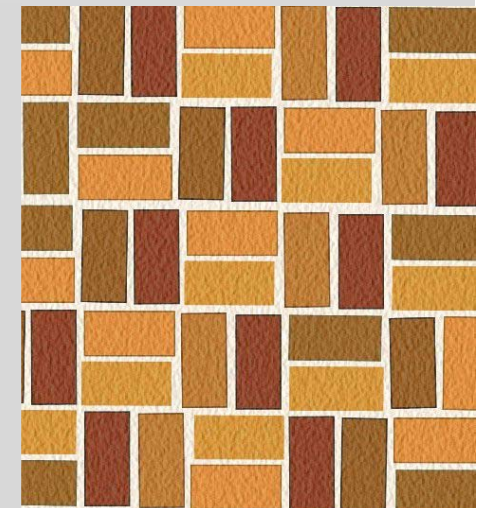


TYPE B

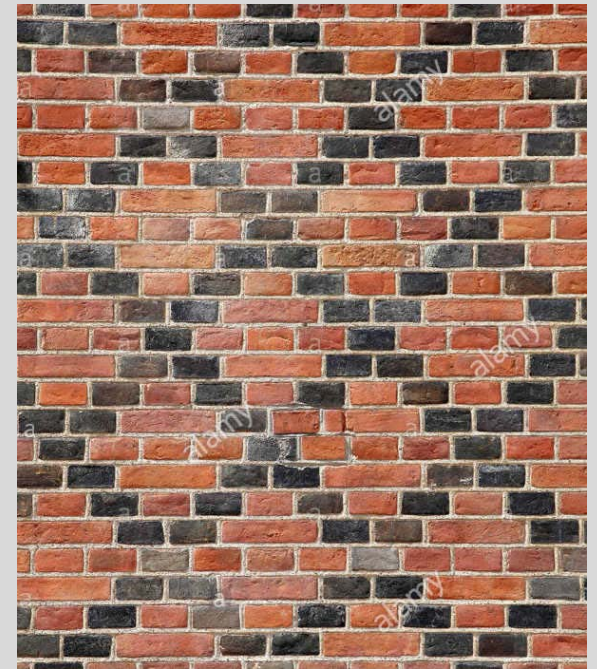
FIELD = TYPE A



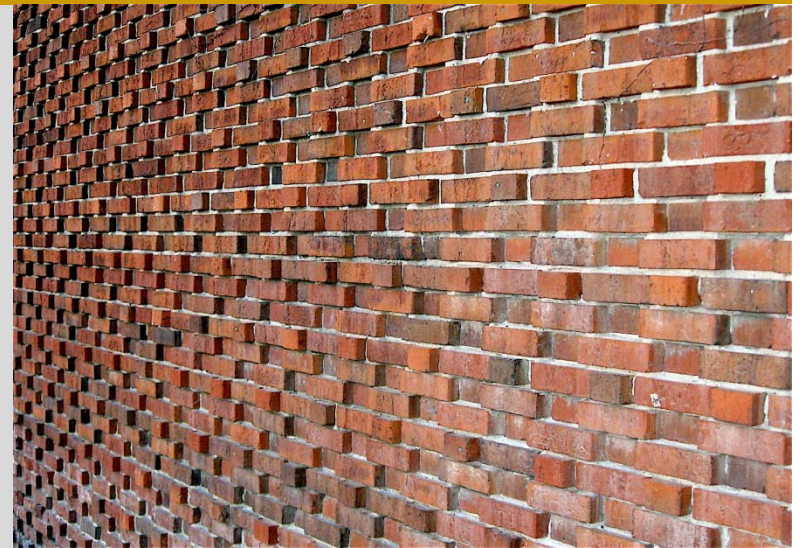
FIELD = TYPE B



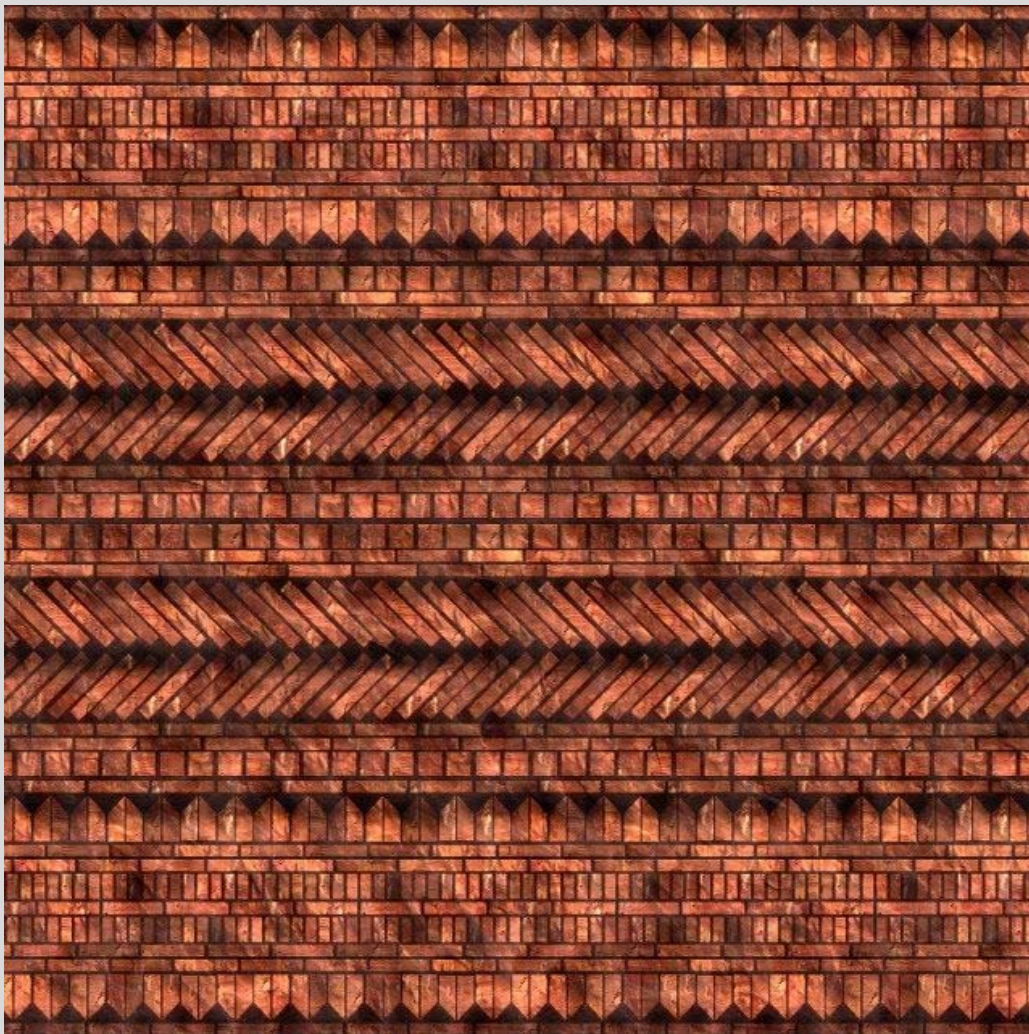
BRICK PATTERNS



BRICK PATTERNS



BRICK PATTERNS



ULTRA HIGH PERFORMANCE CONCRETE



ALASKAN YELLOW CEDAR

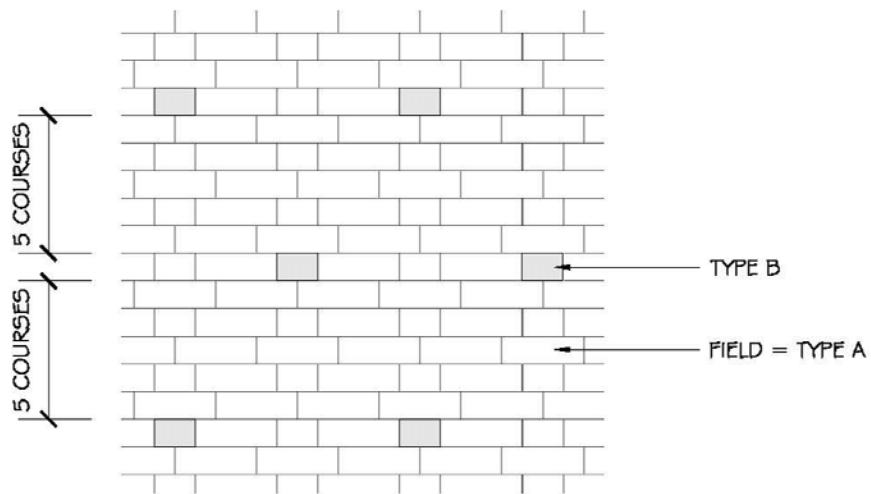


FIBER CEMENT

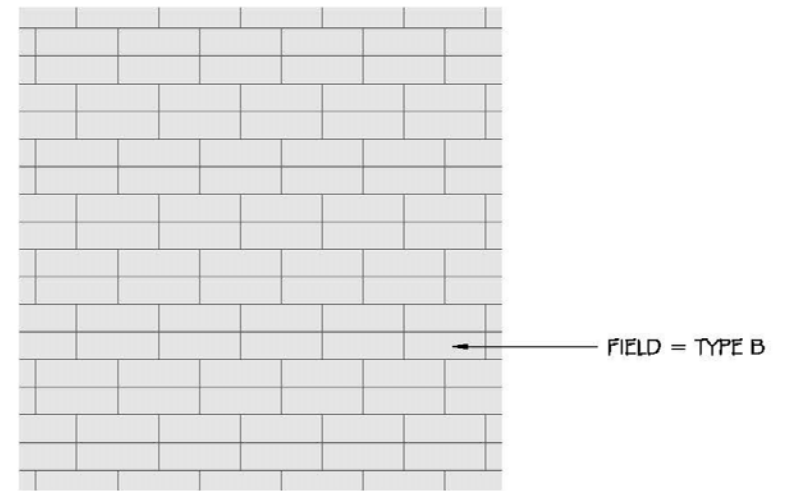


BRICK PATTERN PRECEDENTS | CARR ELEMENTARY SCHOOL, NEWTON, MA





5 BRICK PATTERN A
3/4" = 1'-0"



6 BRICK PATTERN B
3/4" = 1'-0"

BRICK PATTERN PRECEDENTS | CARR ELEMENTARY SCHOOL, NEWTON, MA



BRICK PATTERN PRECEDENTS | WILLIAMSTOWN ELEMENTARY SCHOOL
WILLIAMSTOWN, MA



BRICK PATTERN PRECEDENTS |

CHESTERFIELD GOSHEN REGIONALELEMENTARY SCHOOL
CHESTERFIELD, MA



BRICK PATTERN PRECEDENTS | HANOVER HIGH SCHOOL, HANOVER, MA
HMFH Architects



SCHEDULE



DECEMBER 11TH

SBC – Design Update Site Plan, Plans, Massing, & Materials

DECEMBER 18TH

Joint Meeting with Selectmen and School Committee

DECEMBER 22ND

MSBA Schematic Design Cost/Budget Submission

JANUARY 3RD

MSBA Schematic Design Submission

FEBRUARY 14TH

Approximate MSBA Board Meeting

Thank You

DESIGN UPDATE | FLOOR PLANS



LEVEL ONE





LEVEL TWO





LEVEL THREE

