

TISBURY SCHOOL

TISBURY, MA

SCHOOL BUILDING COMMITTEE MEETING

APRIL 13, 2020

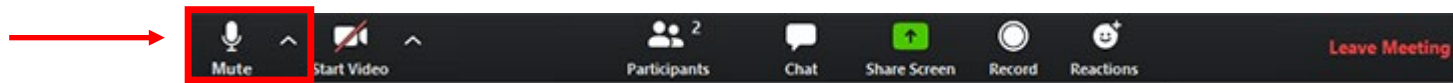


Order of Business:

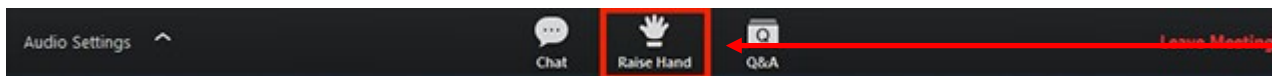
1. Call to Order
2. Attendance
3. Review and possible approval of minutes
4. Owner's Project Manager Report
5. Tappé Architects Report, including:
 - a) Site plan concepts - Discussion with personnel from Tappé and Warner Larson, Inc., Landscape Architects
 - b) Concept options - updates of previously presented concepts; massing models
6. Future meetings - time/dates and agenda items
7. Topics not reasonably anticipated by the chair within 48 hours of the meeting

TSBC VIRTUAL MEETING | REMINDERS

- This is a public meeting and will be recorded and posted to the project website. Please use your full name when signing in, or identify yourself when you call in, so your attendance is recorded.
- Please make sure you are on Mute at all times, unless you are called on. This reduces background noise and makes it easier to hear the speaker/presenter.



- If you have a question, please Raise Your Hand. The host(s) of the meeting will get a notification and will call on you.



TISBURY SCHOOL | SITE/LANDSCAPE - CONCEPT A

LEGEND (PROPOSED MATERIALS)

- 1 MAIN ENTRANCE (CONCRETE UNIT PAVERS)
- 2 EDUCATIONAL TRAIL (ASPHALT, NATIVE BEACH PLANTING)
- 3 RAIN GARDEN (RAISED BOARDWALK)
- 4 U7 SOCCER FIELD (IRRIGATED SPORTS LAWN)
- 5 U9 SOCCER FIELD (IRRIGATED SPORTS LAWN)
- 6 MULTI-USE TERRACE (WOOD DECKING AMPHITHEATER)
- 7 BUS DROP-OFF ENTRANCE (UNIT PAVERS)
- 8 LEARNING COURTYARD (IN-GROUND PLANTER BEDS, GROUP SEATING, STABILIZED STONEDUST)
- 9 KINDERGARTEN PLAY / MUTLI-USE COURTYARD (ASPHALT TRIKE TRACK, TURF PLAY, WOOD STAGE)
- 10 OUTDOOR CAFE SEAT (DECK, STONE WALL)
- 11 SCHOOL GARDENS (STONEDUST, SHED, DWARF FRUIT TREES, WORKSPACE)
- 12 PRE-K / K PLAY (WOOD STRUCTURE, SANDBOX, ENGINEERED WOOD FIBER MULCH (EWF), PIP)
- 13 K1-4 PLAY (WOOD STRUCTURE, EWF, PIP)
- 14 K5-8PLAY (CLIMBING ROPE STRUCTURE, EWF, PIP)
- 15 TEE-BALL
- 16 PRE-K PLAY (TURF, MANIPULATIVE PLAY)
- 17 SERVICE DRIVE (ACCESSIBLE ENTRANCE)



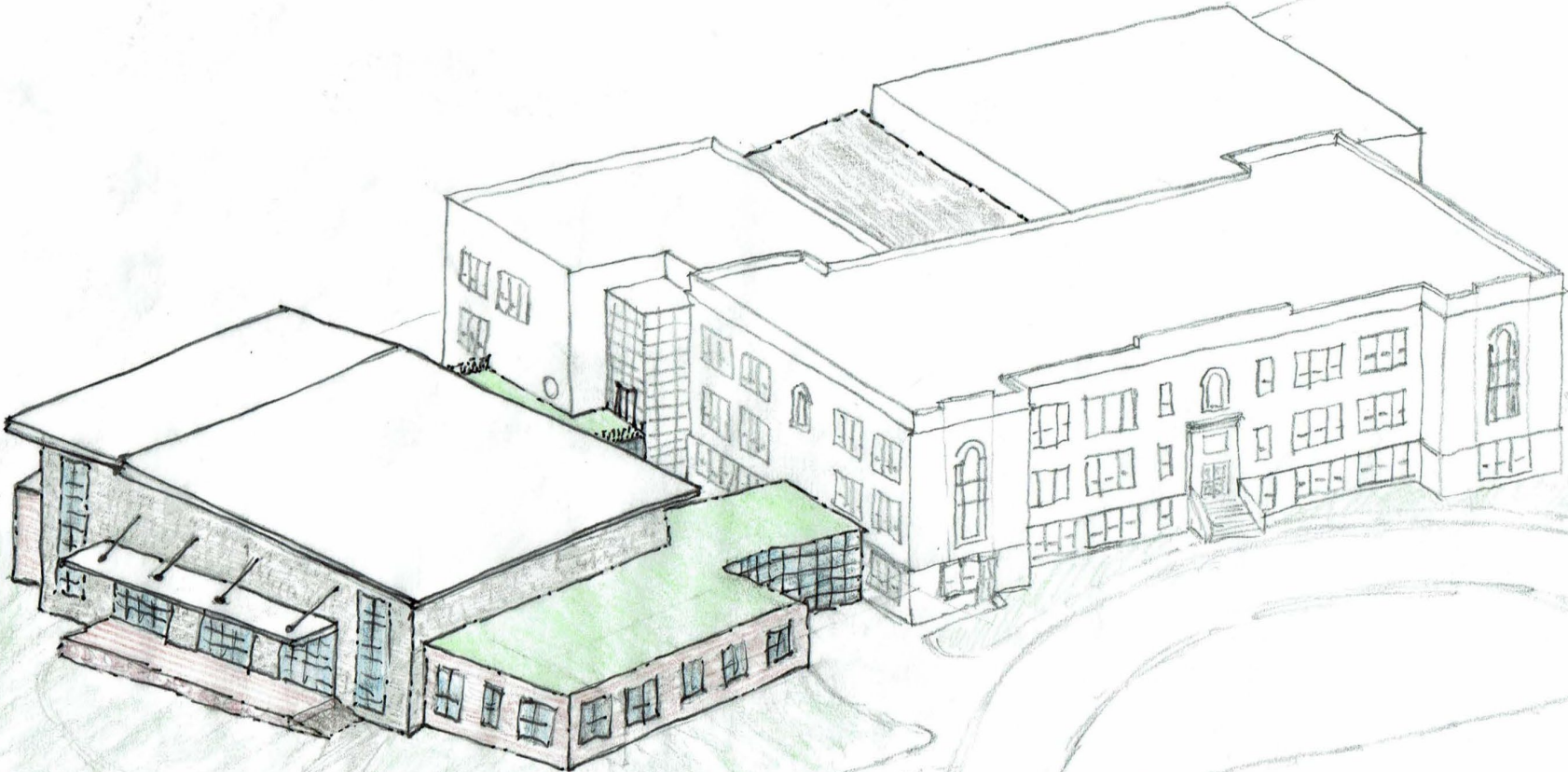
TISBURY SCHOOL | SITE/LANDSCAPE – CONCEPT B

LEGEND (PROPOSED MATERIALS)

- 1 MAIN ENTRANCE (CONCRETE UNIT PAVERS)
- 2 OUTDOOR PATIO TERRACE (BLUESTONE, FIELDSTONE SEAT WALLS)
- 3 MULTI-USE AMPHITHEATER (FIELDSTONE SEAT WALLS)
- 4 MULTI-USE STAGE (WOOD DECK)
- 5 U7 SOCCER FIELD (IRRIGATED SPORTS LAWN)
- 6 OUTDOOR TRACK (ASPHALT)
- 7 PRE-K / K PLAY (WOOD STRUCTURE, SANDBOX, ENGINEERED WOOD FIBER MULCH (EWF),
- 8 K1-4 PLAY (WOOD STRUCTURE, EWF, PIP)
- 9 KS-8 PLAY (CLIMBING ROPE STRUCTURE, EWF, PIP)
- 10 SCHOOL GARDENS (STONEDUST, SHED, DWARF FRUIT TREES, WORKSPACE)
- 11 BUS DROP-OFF ENTRANCE (UNIT PAVERS)
- 12 KINDERGARTEN PLAY / MUTLI-USE COURTYARD (ASPHALT TRIKE TRACK, TURF PLAY, WOOD STAGE)
- 13 ACCESSIBLE ENTRANCE (SLOPED RAMP)
- 14 PRE-K PLAY (TURF, MANIPULATIVE PLAY)
- 15 SERVICE DRIVE (ACCESSIBLE ENTRANCE)
- 16 TEE-BALL
- 17 U9 SOCCER FIELD (IRRIGATED SPORTS LAWN)

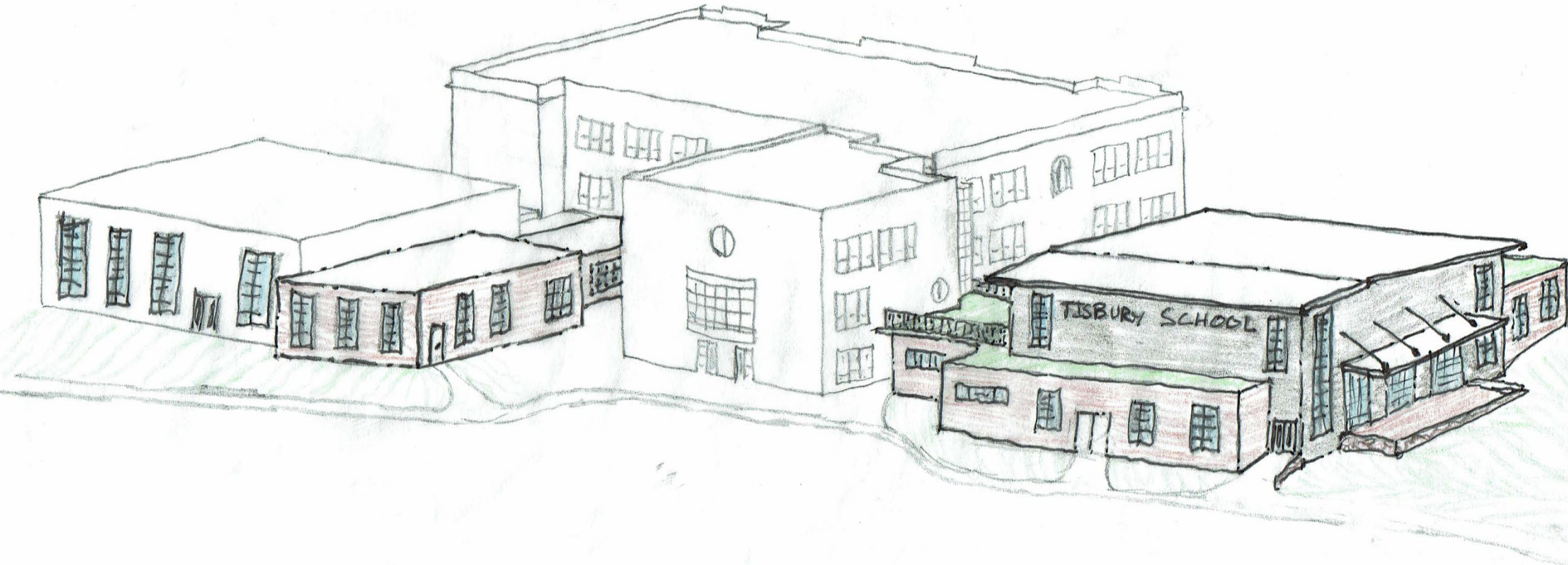


TISBURY SCHOOL | CONCEPT 1 – SOUTH ELEVATION



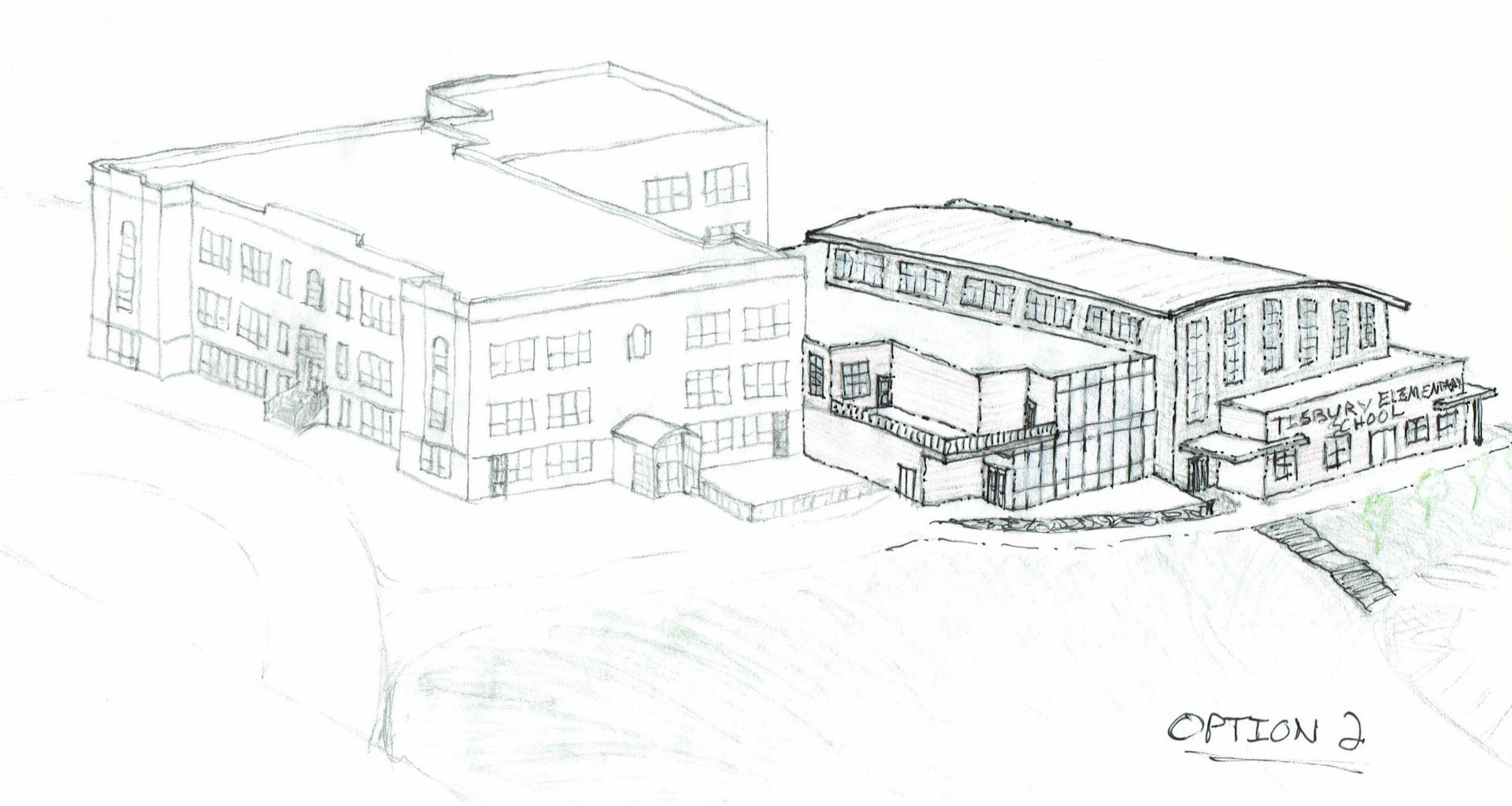
OPTION 1

TISBURY SCHOOL | CONCEPT 1 – NORTH ELEVATION



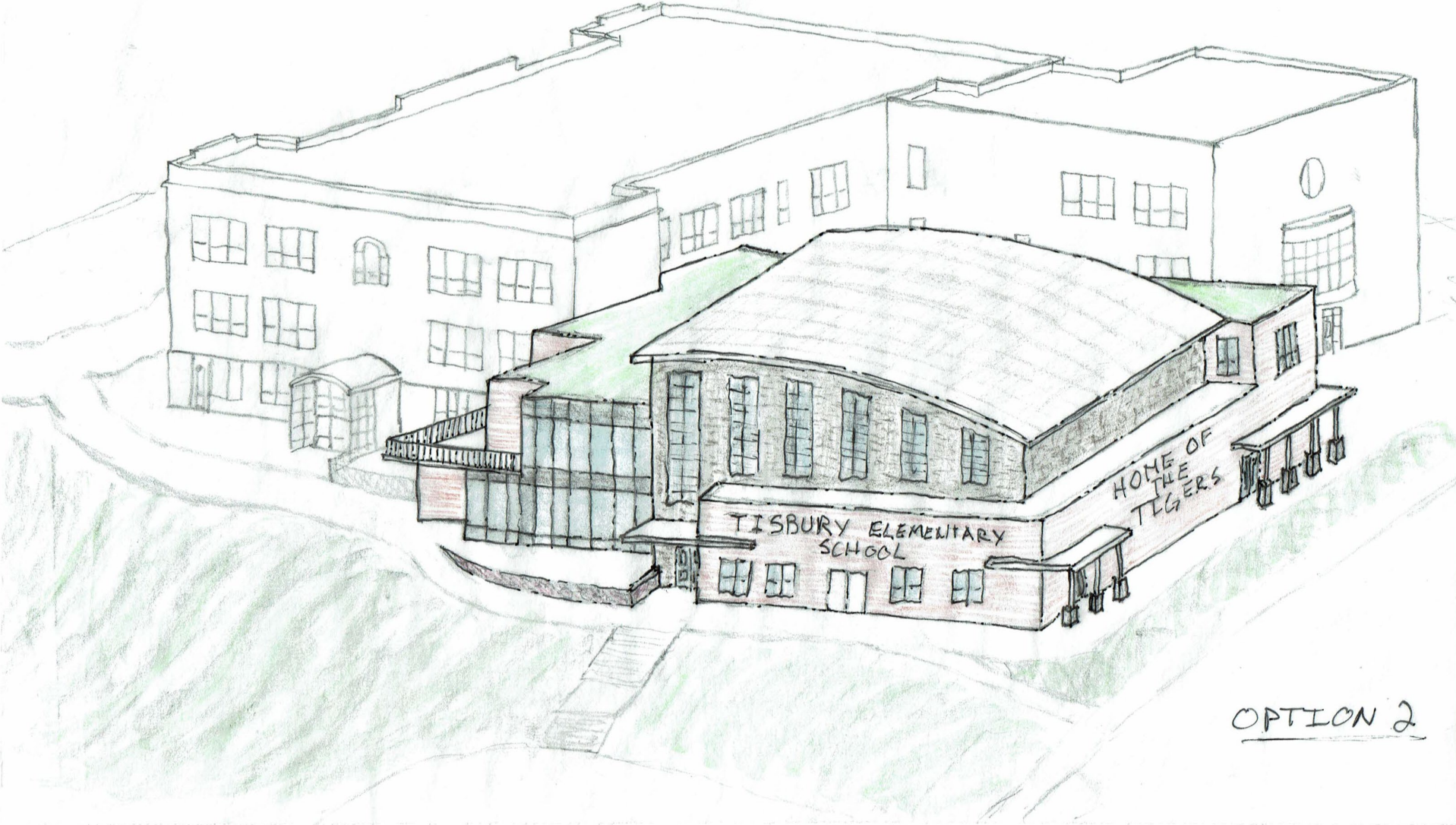
OPTION 1

TISBURY SCHOOL | CONCEPT 2 – SOUTH ELEVATION



OPTION 2

TISBURY SCHOOL | CONCEPT 2 – EAST ELEVATION



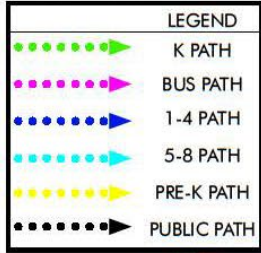
OPTION 2

TISBURY SCHOOL | CONCEPT 1 – 1ST FLOOR ENTRY DIAGRAM

TISBURY ELEMENTARY SCHOOL

UPDATED 03/05/20

TOTAL ADDITION: +/- 16,000 SF



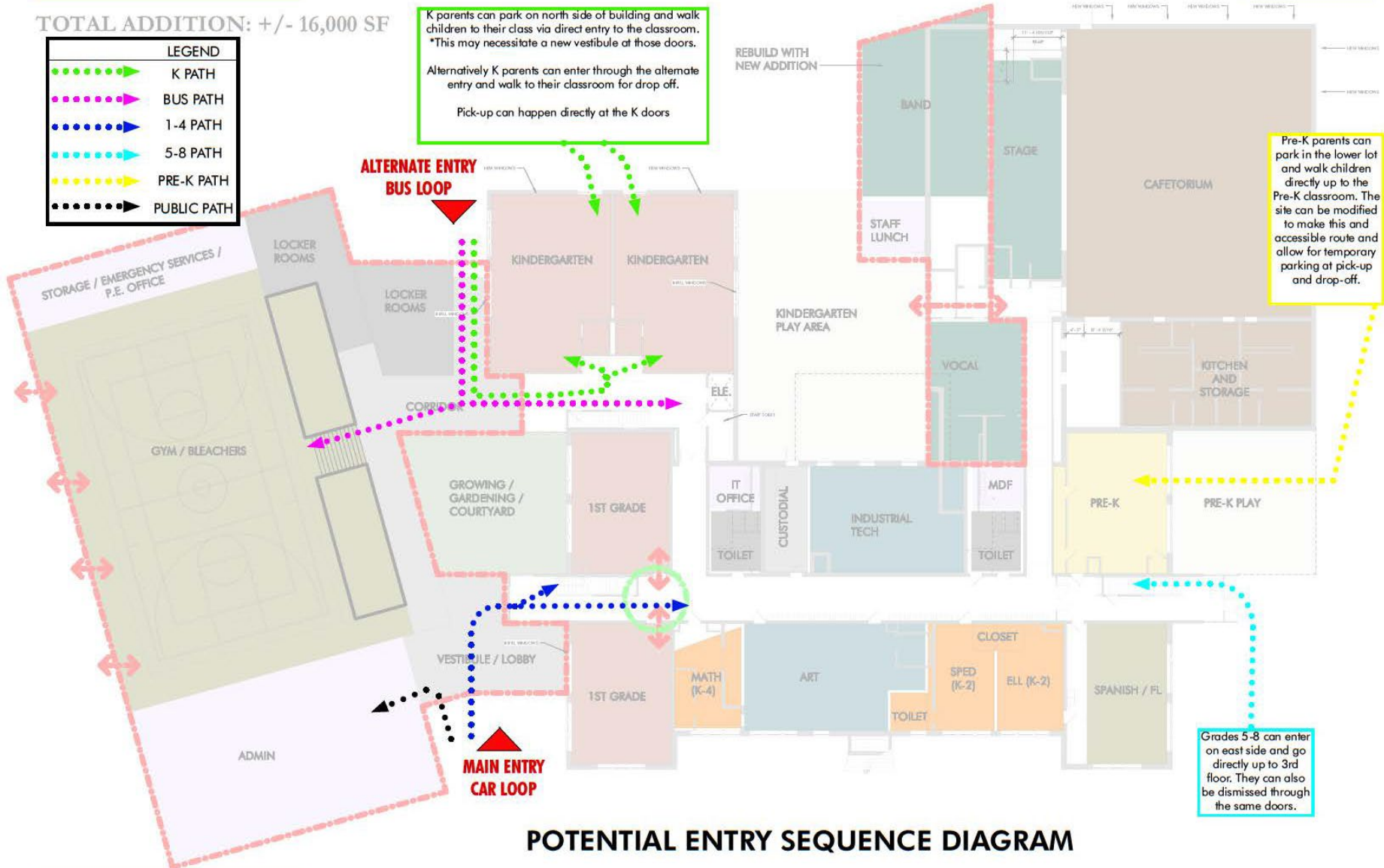
K parents can park on north side of building and walk children to their class via direct entry to the classroom.
*This may necessitate a new vestibule at those doors.

Alternatively K parents can enter through the alternate entry and walk to their classroom for drop off.

Pick-up can happen directly at the K doors

Pre-K parents can park in the lower lot and walk children directly up to the Pre-K classroom. The site can be modified to make this an accessible route and allow for temporary parking at pick-up and drop-off.

Grades 5-8 can enter on east side and go directly up to 3rd floor. They can also be dismissed through the same doors.



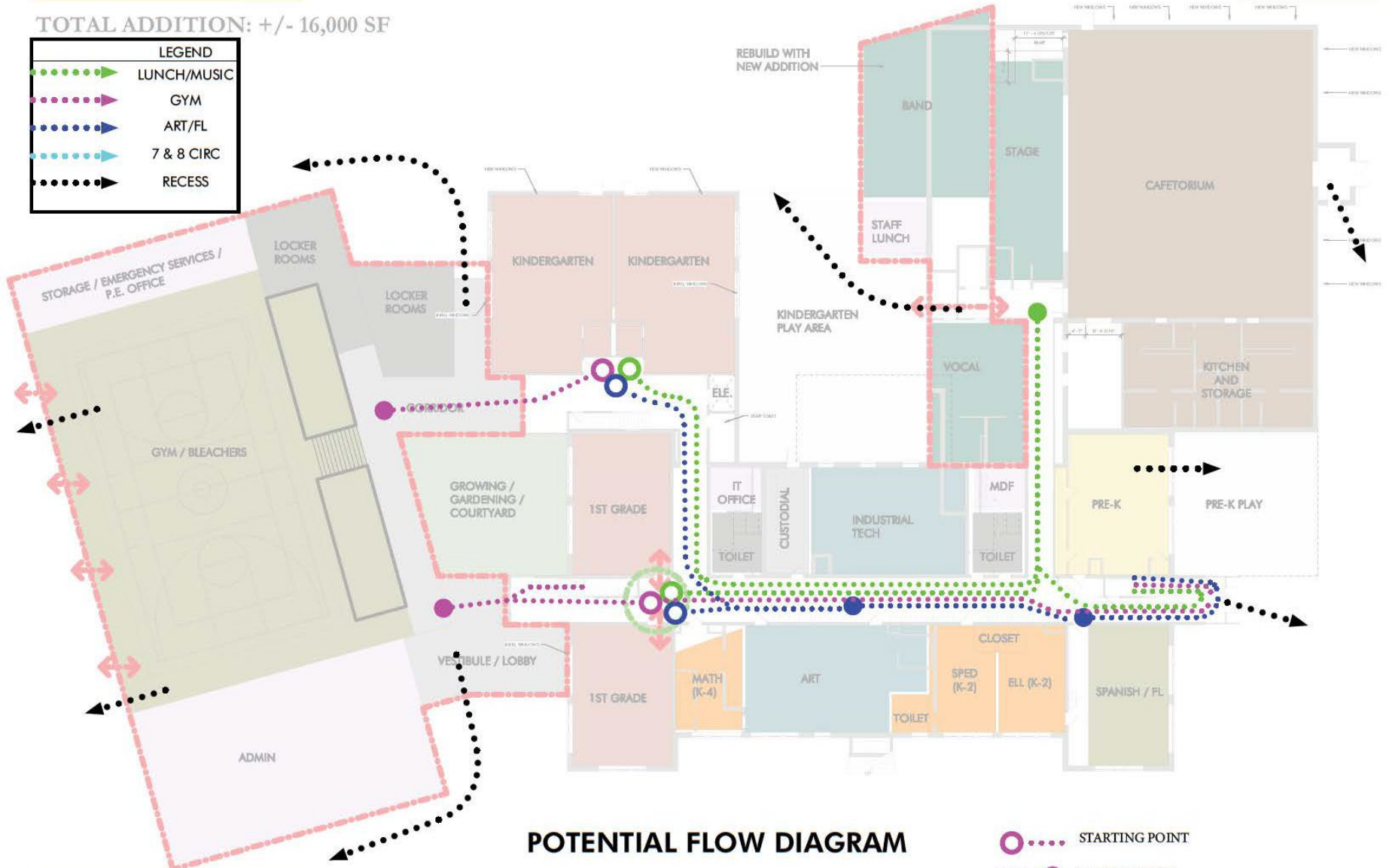
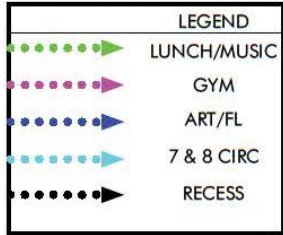
POTENTIAL ENTRY SEQUENCE DIAGRAM

TISBURY SCHOOL | CONCEPT 1 – 1ST FLOOR FLOW DIAGRAM

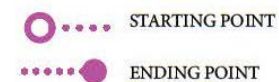
TISBURY ELEMENTARY SCHOOL

UPDATED 03/05/20

TOTAL ADDITION: +/- 16,000 SF



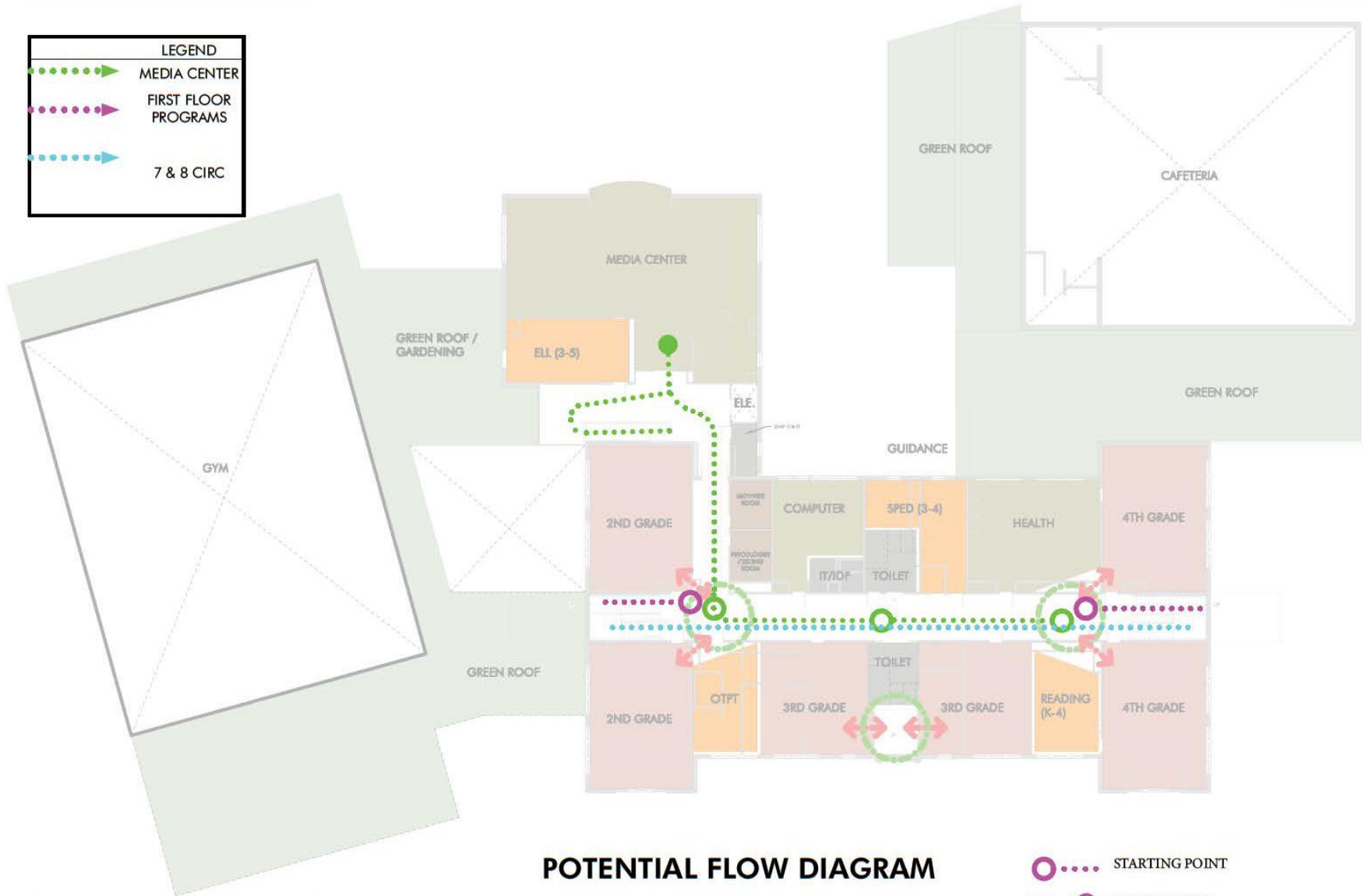
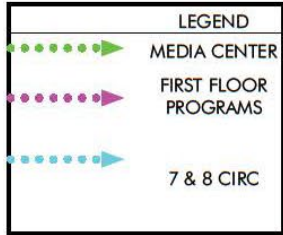
POTENTIAL FLOW DIAGRAM



TISBURY SCHOOL | CONCEPT 1 – 2ND FLOOR FLOW DIAGRAM

TISBURY ELEMENTARY SCHOOL

UPDATED 03/05/20



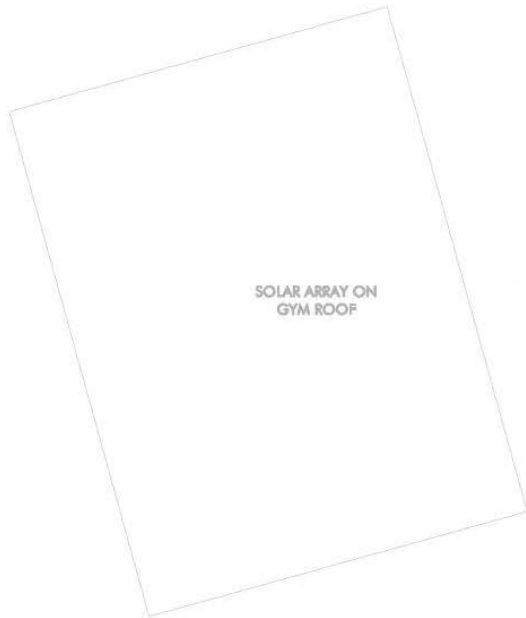
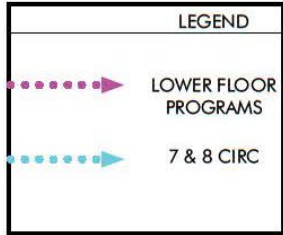
POTENTIAL FLOW DIAGRAM

- STARTING POINT
- ENDING POINT

TISBURY SCHOOL | CONCEPT 1 – 3RD FLOOR FLOW DIAGRAM

TISBURY ELEMENTARY SCHOOL

UPDATED 03/05/20



POTENTIAL FLOW DIAGRAM

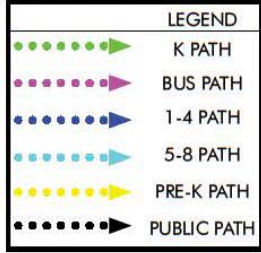


TISBURY SCHOOL | CONCEPT 2 – 1ST FLOOR ENTRY DIAGRAM

TISBURY ELEMENTARY SCHOOL

UPDATED 03/05/20

TOTAL ADDITION: +/- 19,500 SF



K parents can park on north side of building and walk children to their class via direct entry to the classroom.
*This may necessitate a new vestibule at those doors.

Alternatively K parents can enter through the alternate entry and walk to their classroom for drop off.

Pick-up can happen directly at the K doors

**ALTERNATE ENTRY
BUS LOOP**

**GRADES 1-4
STUDENT
MAIN ENTRY**

**GRADES 1-4
STUDENT
MAIN ENTRY**

**GRADES 5-8
STUDENT**

Grades 5-8 can enter on east side and go directly up to 3rd floor. They can also be dismissed through the same doors.

Pre-K parents can park in the lower lot and walk children directly up to the Pre-K classroom. The site can be modified to make this an accessible route and allow for temporary parking at pick-up and drop-off.



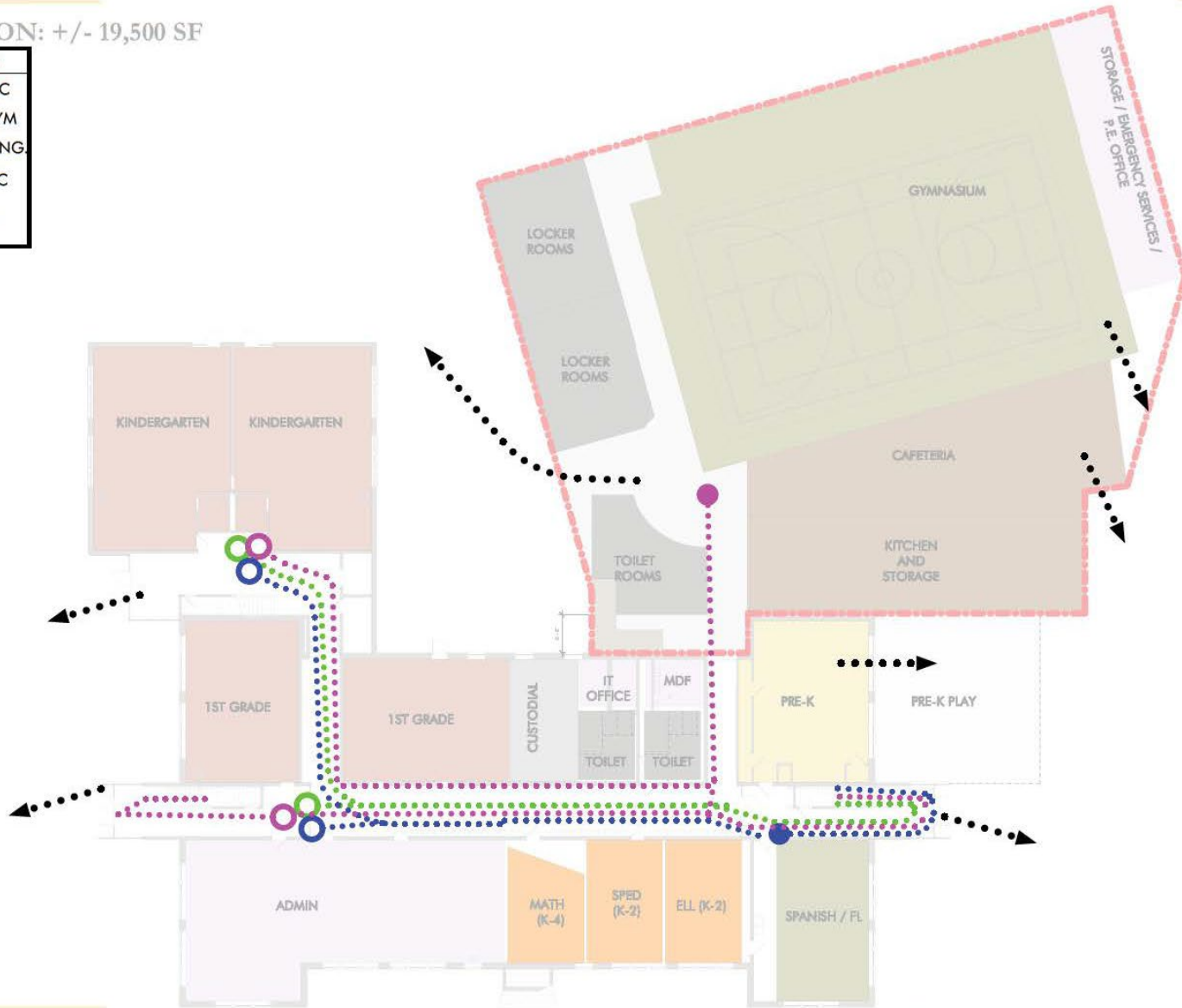
TISBURY SCHOOL | CONCEPT 2 – 1ST FLOOR FLOW DIAGRAM

TISBURY ELEMENTARY SCHOOL

UPDATED 03/05/20

TOTAL ADDITION: +/- 19,500 SF

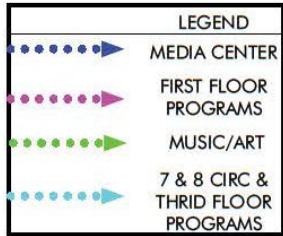
LEGEND	
	ART/MUSIC
	LUNCH/GYM
	FOREIGN LANG.
	7 & 8 CIRC
	RECESS



TISBURY SCHOOL | CONCEPT 2 – 2ND FLOOR FLOW DIAGRAM

TISBURY ELEMENTARY SCHOOL

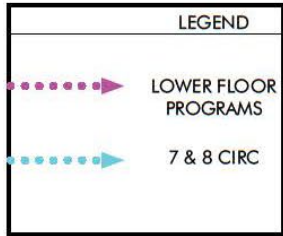
UPDATED 03/05/20



TISBURY SCHOOL | CONCEPT 2 – 3RD FLOOR FLOW DIAGRAM

TISBURY ELEMENTARY SCHOOL

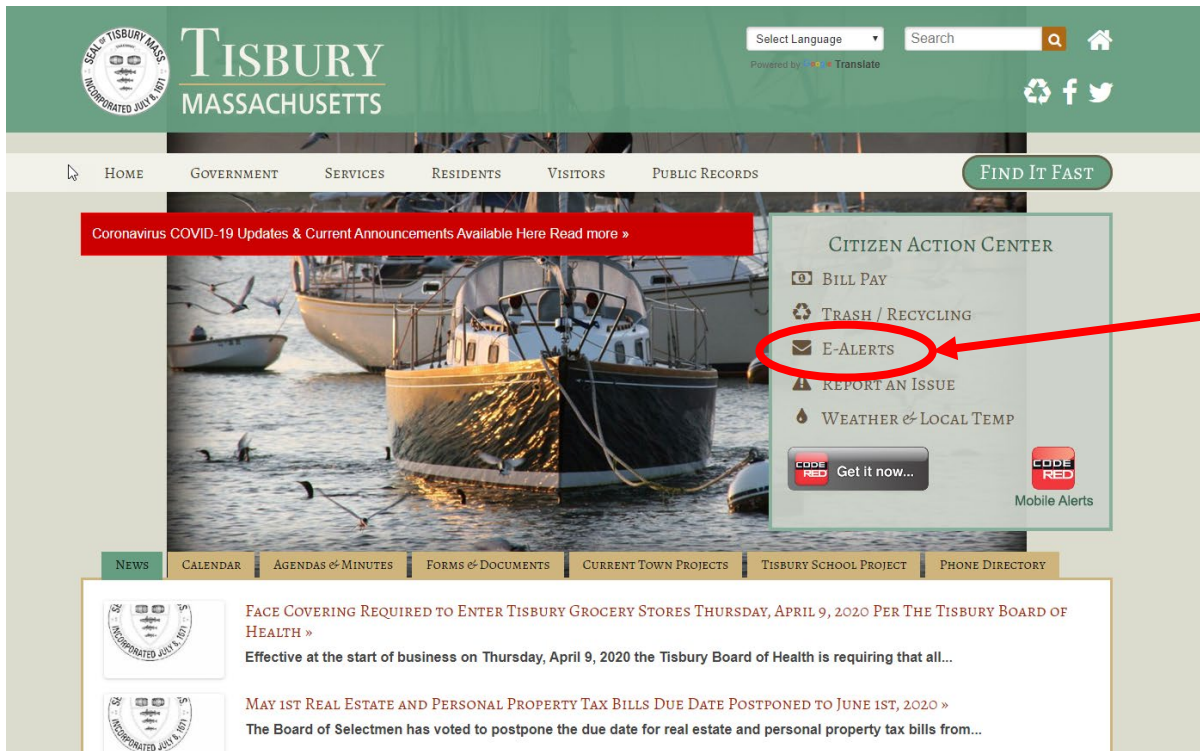
UPDATED 03/05/20



STAY INFORMED | TOWN RESOURCES

Visit the Town of Tisbury website to sign up for E-Alerts to receive notifications about upcoming meetings:

www.tisburyma.gov



Click here to sign up to receive email notification for a variety of Town notices, meetings, etc.

STAY INFORMED | BUILDING COMMITTEE + TOWN RESOURCES

READ MORE HERE!

Tisbury School Project Website:

www.tisbury-school-project.com

EMAIL US!

Tisbury School Building Committee:

tisburyschoolproject@gmail.com

Town of Tisbury, **Sign-up for e-Alerts:**

www.tisburyma.gov