

TISBURY SCHOOL

TISBURY, MA

SCHOOL BUILDING COMMITTEE MEETING & COMMUNITY CONVERSATION

DECEMBER 17, 2019



TISBURY SCHOOL

HISTORY

The Tisbury School was constructed in 1929 to replace the wooden Center Street School, which was located where the town tennis courts are now.

The new school was the result of a twenty- year discussion and a contentious seven-year planning process. Voters approved an appropriation of \$185,000 to build the school.



TISBURY SCHOOL

HISTORY

The school was designed by the Fitchburg architectural firm of Haynes and Mason – Stephen Wesley Haynes and Harold E. Mason.

This was a young architectural team (both Haynes and Mason were in their 30s) and during their 12-year partnership they designed several public buildings. Two of those buildings are in Falmouth, the Teaticket School, built in 1927, and the Central Fire Station on Main Street, built in 1929. Both buildings are on the National Register of Historic Places.

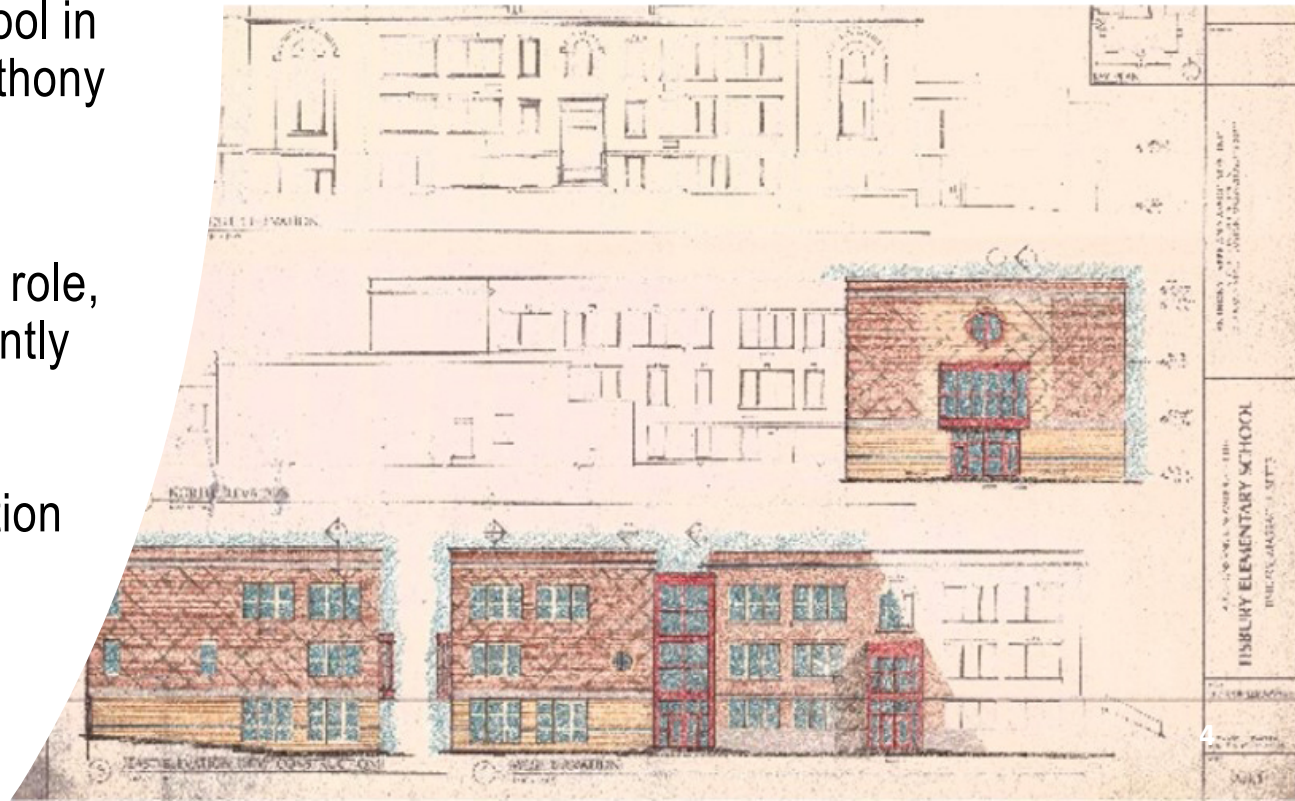


TISBURY SCHOOL | HISTORY

While Haynes went on to the more illustrious career, it was Harold Mason who was the architect of record for the Tisbury School. He was also the architect of the gym addition in 1939 and died in 1950 at age 61 while working on the 1951 addition behind the gym.

A third addition to the school in 1994 was designed by Anthony Tappé Associates.

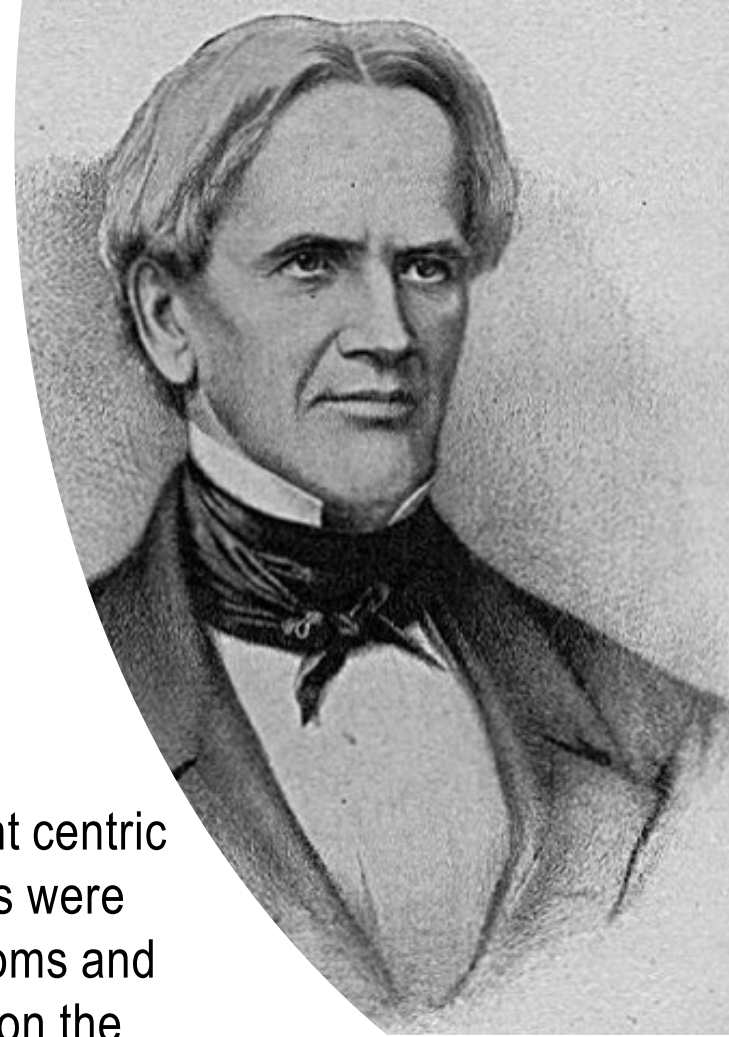
In the tradition of Mason's role, Tappé Architects has recently been selected to plan a renovation of the existing building and a fourth addition to the school.



TISBURY SCHOOL | HISTORY

When the Haynes and Mason plans were revealed, the Gazette reported, “The plans call for the most modern type of building, in construction, arrangement and style of architectural design.” Many of the modern design features of the school were the result of more than a century of educational theories articulated by Horace Mann and others.

Mann, born in 1796 in Franklin, MA, promoted a student centric philosophy toward public education. By 1850, his ideas were finding their way into school design with larger classrooms and windows. By 1900, numerous books had been written on the appropriate design and construction of school buildings, with attention paid to proper lighting, especially electric lighting, the ventilation of classrooms, durable materials and outdoor space for recreation.



TISBURY SCHOOL | HISTORY

In this context, the Tisbury School was designed in 1928 to accommodate 12 grades.

The plans were approved by the building committee on February 2, 1929, with public bids due March 22, 1929.

There were 10 bids and the firm of A. M. Lunberg from St. Louis won with the low bid of \$149,000.

The only island contractor to bid was H.N. Hinckley Contracting Co. who bid \$174,333.

Construction started on April 16, 1929, and the building was dedicated a year later on April 11, 1930.



TISBURY SCHOOL | HISTORY

The Gazette reported that the dedication was attended by state and local officials as well as “...visitors who walked from room to room, eagerly interested in every provision made by the architect and builder; it was dedicated, too, in the flowers which brightened the rooms, and the bits of school work written on the blackboards; it was dedicated, even, in the brilliant illumination which made the imposing structure from the outside a beautiful sight to behold.”

The Gazette further reported that “Visitors came from all parts of the island to view the building, but the town of Tisbury itself was most in evidence as if the whole community was bent on giving its approval and blessing.”



PROJECT MISSION STATEMENT:

To present the voters of the Town of Tisbury a renovation and addition plan of the existing Tisbury School building that meets the educational program set forth by the school committee for the students of today and for future generations.

TISBURY SCHOOL | SCHOOL BUILDING COMMITTEE

Rachel Orr	TSBC, Chair	Community Member
Reade Milne	TSBC, Vice Chair	Contractor, Building Inspector, Parent, Community Member
Sean DeBettencourt	TSBC	Tisbury School Grades 5-8 Staff Representative, Community Member
James Rogers	TSBC	Tisbury Selectmen, Community Member
Michael Watts	TSBC	Tisbury School Committee, Community Member
John Custer	TSBC	Tisbury School Principal, Community Member
Rita Jeffers	TSBC	Tisbury School Grades K-4 Staff Representative, Community Member
Peter Gearhart	TSBC	Architect, Community Member
Harold Chapdelaine	TSBC	General Contractor, Chair - Tisbury Historical Commission, Chair – William Street Historic District Commission, Community Member

TISBURY SCHOOL | OWNER'S PROJECT MANAGEMENT



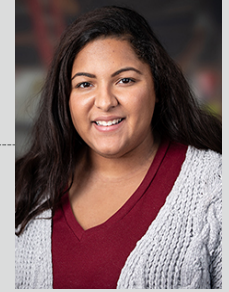
RICHARD MARKS
Project Director



JOE SULLIVAN
Project Manager



CHRISTINA OPPER
Project Communications



ALYSSA CHATANI
Asst. Project Manager



SIDNI BRAGG
Project Controls



DELWYN WILLIAMSON
Director of Cost Estimating



MEGAN MCCALLON
Scheduling Specialist

TISBURY SCHOOL | ARCHITECT

TAPPÉ ARCHITECTS

CHRIS BLESSEN, AIA, MCPPO, LEED AP	PRINCIPAL IN CHARGE, PLANNING	MA #50685
CHARLES M. HAY, AIA, MCPPO	PRINCIPAL	MA #8628
CESAR DEDIOS, AIA, MCPPO, LEED AP	TECHNICAL PRINCIPAL	MA#10452
MATTHEW BARNHART, MCPPO	PROJECT MANAGER	
JENNIFER LITTLEFIELD, AIA, MCPPO, LEED AP	DIR. OF CONST. ADMIN, HEALTH SVC	MA #20318



Chris Blessen, AIA
Principal-in-Charge



Matt Barnhart, AIA
Project Manager

<p>B. BUILDING ENVELOPE</p> <p>TAPPÉ ARCHITECTS BOSTON, MA</p> <p>CESAR DEDIOS AIA, MCPPO MA#10452</p>	<p>C. ED PROGRAMMING</p> <p>NEW VISTA DESIGN JAMAICA PLAIN, MA</p> <p>DAVID STEPHEN MA #9752</p>	<p>D. PLANNING</p> <p>TAPPÉ ARCHITECTS BOSTON, MA</p> <p>CHRIS BLESSEN, AIA, MCPPO MA #50685</p>	<p>E. CIVIL ENGINEERING</p> <p>NITSCH ENGINEERING, INC. BOSTON, MA</p> <p>WILLIAM MAHER, PE, LSIT MA #41669 SDO REGISTERED WBE</p>	<p>F. LANDSCAPE</p> <p>WARNER LARSON, INC. BOSTON, MA</p> <p>DAVID WARNER, ASLA MA #1209</p>	<p>G. STRUCTURAL</p> <p>ENGINEERS DESIGN GROUP MALDEN, MA</p> <p>MEHUL DHURV, P.E. MA #37453 SDO REGISTERED MBE</p>	<p>H. FIRE PROTECTION</p> <p>GRIFFITH AND VARY, INC. WAREHAM, MA</p> <p>WAYNE MATTSO. P.E. PE#41546</p>
<p>I. PLUMBING</p> <p>GRIFFITH AND VARY, INC. WAREHAM, MA</p> <p>WAYNE MATTSO. P.E. PE#41546</p>	<p>J. HVAC ENGINEERING</p> <p>GRIFFITH AND VARY, INC. WAREHAM, MA</p> <p>WAYNE MATTSO. P.E. PE#41546</p>	<p>K. ELECTRICAL/LIGHTING</p> <p>GRIFFITH AND VARY, INC. WAREHAM, MA</p> <p>ROBERT BRAVO, PE PE#46657</p>	<p>L. DATA/COMM</p> <p>EDVANCE TECHNOLOGY ANDOVER, MA</p> <p>DOUGLAS FARIA PRINCIPAL</p>	<p>M. ENVR PERMITTING</p> <p>NITSCH ENGINEERING, INC. BOSTON, MA</p> <p>WILLIAM MAHER, PE, LSIT MA #41669 SDO REGISTERED WBE</p>	<p>N. GEOTECHNICAL</p> <p>WESTON & SAMPSON PEABODY, MA</p> <p>FRANK RICCIARDI, PE, LSP MA#5586</p>	<p>O. HAZMAT</p> <p>UNIVERSAL ENVIRONMENTAL FRAMINGHAM, MA</p> <p>AMMAR DIEB, PRESIDENT MA#900326</p>
<p>P. COST ESTIMATING</p> <p>PM&C HINGHAM, MA</p> <p>PETER BRADLEY PRESIDENT</p>	<p>Q. KITCHEN/FOOD SERV</p> <p>CRABTREE MCGRATH ASSOC. DANVERS, MA</p> <p>JOHN SOUSA, JR. PRINCIPAL</p>	<p>R. ACOUSTICAL</p> <p>CAVANAUGH TOCCI ASSOC. SUDBURY, MA</p> <p>LINCOLN B. BERRY PRINCIPAL</p>	<p>S. SPECIFICATIONS</p> <p>KALIN ASSOCIATES NEWTON, MA</p> <p>MARK KALIN PRESIDENT MA#4657</p>	<p>T. LIBRARY/MEDIA</p> <p>TAPPÉ ARCHITECTS BOSTON, MA</p> <p>JEFFREY HOOVER, AIA MA #7835</p>	<p>U. TECHNOLOGY/A/V</p> <p>EDVANCE TECHNOLOGY ANDOVER, MA</p> <p>DOUGLAS FARIA PRINCIPAL</p>	<p>V. HEALTH SERVICES</p> <p>TAPPÉ ARCHITECTS BOSTON, MA</p> <p>JENNIFER LITTLEFIELD, AIA MA #20318</p>
<p>W. SUSTAINABILITY</p> <p>ANDELMAN/LELEK NORWOOD, MA</p> <p>MAGDA LELEK #45055 SDO REGISTERED WBE</p>	<p>X. CODE</p> <p>SULLIVAN CODE GROUP BOSTON, MA</p> <p>DON E. CONTOIS, PE MA# 46915</p>	<p>Y. ACCESSIBILITY</p> <p>SULLIVAN CODE GROUP BOSTON, MA</p> <p>DON E. CONTOIS, PE MA# 46915</p>	<p>Z. FF&E</p> <p>TAPPÉ ARCHITECTS BOSTON, MA</p> <p>WENDY HYNES, IIDA, IDEC #018954</p>	<p>AA. SECURITY</p> <p>DVS SECURITY CONSULTING HAMDEN, CT</p> <p>PHILIP A. SANTORE, SENIOR PRINCIPAL</p>	<p>BB. ARCHAEOLOGY</p> <p>THE PUBLIC ARCHAEOLOGY LAB, INC. PAWTUCKET, RI</p> <p>HOLLY HERBSTER, SR. ARCHAEOLOGIST</p>	

 = PREVIOUSLY TEAMED WITH TAPPÉ ON MASSACHUSETTS PUBLIC SCHOOL PROJECTS

TISBURY SCHOOL | PRELIMINARY PROJECT DESIGN SCHEDULE



Task / Phase Description	December	January	February	March	April	May	June
Execute Contract & Commence Work - 12/01/19	★						
Kick Off Meeting with Committee - 12/17/19	◆						
Existing Conditions Review - 12/17/19 thru 1/31/20	■						
Community Design Session(s) 1/22/20 & 1/23/20		◆					
Final Existing Conditions Reports 1/31/20			★				
Confirm Project Scope		■					
Review Educational Program		■					
Review and Confirm Educational and Community Goals		■					
Create Initial Concept Diagrams		■					
Community & Committee Review Meeting 2/13/20			◆				
Revise Diagrams			■				
Identify Sustainable Design Objectives			■				
Community & Committee Review Meeting 3/05/20				◆			
Revise and Finalize Diagrams for Cost Estimates				■			
Cost Estimate of Concepts 3/17/20 - 3/31/20				■			
Final Community Concept Presentation 4/1/20					◆		
Schematic Design				■			
Develop Preferred Option				■			
SD Development Community Review Meeting 4/22/20					◆		
Further Schematic Design					■		
Community Review Meeting 5/14/20						◆	
Final Schematic Design						■	
SD Cost Estimate						■	
Design Review Meeting 6/04/20							◆
Final SD Adjustments, Coordination & Project Budget							■
Final Schematic Design Community Meeting 6/25/20							★

How do you use the Tisbury school building?



**How do you use the Tisbury School site
and/or playgrounds?**

What do you like about the building?



What could be better?

TISBURY SCHOOL | COMMUNITY CONVERSATION



More Comments / Questions?



STAY INFORMED | PROJECT WEBSITE + EMAIL

Tisbury School Project – Website:

www.tisbury-school-project.com



Tisbury School Building Committee – Email Address:

tisburyschoolproject@gmail.com