



Community and Student Visioning Workshops Overview and Notes

On January 22, 2020, 33 Tisbury community members participated in one of two 2-hour long Visioning Workshops run by New Vista Design and Tappé Architects. One workshop took place in the morning from 10:00 AM - 12:00 PM at the Tisbury Emergency Services Facility, and another took place in the evening, from 6:00 - 8:00 PM at the Tisbury Senior Center. Each workshop was a collaborative session designed to engage community members in a discussion of their educational, architectural and community-related priorities for the renovation of the Tisbury Elementary School. The following agenda items were discussed at each workshop:

- Overview of the Tisbury School design process and parameters
- Sharing of priorities determined during the 2017 visioning process
- Discussion and recording of community priorities for the Tisbury School renovation
- Sharing of design patterns and approaches
- Discussion and recording of community design priorities for the Tisbury School renovation/addition

An additional Student Visioning Workshop for 28 Tisbury School students, grades 2-8, took place from 1:00 -2:30 PM in the Tisbury Emergency Services Facility. The following agenda items were discussed with students:

- Discussion and recording of student priorities for the Tisbury School renovation/addition
- Sharing of Blue-Sky Ideas for the Tisbury School renovation

The pages below contain a summary of notes gathered during each workshop, with highlights of the themes and ideas that emerged. For more information about the workshops, please contact Tisbury School Principal, John Custer at jcuster@mvyyps.org.



Community Priority Goals

The following community priority goals for the design of the renovated Tisbury School were recorded during two 2-hour long Visioning Workshops which were coordinated by New Vista Design and Tappé Architects, and took place on January 22, 2020. Approximately 33 community members shared their ideas about what they would like to see in a renovated building. The priorities below have been grouped thematically and represent the range of priorities shared by the entire group.



Community Support

- Community inclusive
- Building needs to be relevant to the entire community, not just those with school age children
- A building project that can garner the support of the community:
 - Addresses architectural compatibility
 - Affordability
 - Inclusiveness
 - Energy conservation
 - Durability in the future
 - Consider maintenance costs
 - Community use
 - Shelter

Support for Tisbury School Educational Program

- Reflects goals of educational plan with creation of learning community for all residents
- Forward thinking – to attract families and professional talent
- The building should reflect what makes it great: the staff, the teachers, the students, the community
- Beautiful, inspiring spaces that promote flexibility and creativity
- Source of pride amongst students, teachers, and parents
- Education is a path of exploration where more questions may go unanswered, but the tools to adapt with be instilled in the learners and teachers who occupy the building

Safety and Welcome

- Welcoming spaces especially for students, teachers but also public
- A welcoming, safe and warm place to learn
- Know the issues of safety but also welcoming
- More welcoming entrance to the school

Minimization of Disruptions to Learning

- How to renovate with less disruption to current students

STEM, STEAM and Hands-On Learning

- Makerspaces
- Inspire STEAM – hands-on learning
- STEM/STEAM focused space

Universal Design for Learning

- Universal design for learning and community
- Multi-style learning spaces
- Least restrictive classroom space
- Appropriate scales for corresponding age levels and social abilities
- 360 Learning

Community Priorities Continued

Collaborative and Project-Based Learning

- Students practice critical thinking and problem solving
- Students lead learning -> "teaching spaces" designed for all sizes
- Project Based Learning and differentiated learning based on student's strength
- Love the emphasis on collaborative learning and joy of learning
- Critical thinking and making learning connections
- Importance of art, music, sport
- Co-teaching is such a huge thing personally but our current school leaves little room for this
- Imagination, reading, interpretation
- New concepts in learning i.e. STEM, history, civics, ...
- Give students 21st century educational setting and tools they require
- Collaborative learning
- Promote curiosity and critical thinking
- Enrichment opportunities

Special Education

- Larger spaces for special education and individualized learning
- Flow of school classroom – SPED / ELL / Specials

Support for English Language Learners

- Language acquisition (native & ELL)

Good Acoustics

- Acoustics: quiet chairs, doors, ventilation
- Acoustic separation, especially between floors

Social and Emotional learning

- Students practice empathy and other important social skills
- Kindness



Hands-On Learning

- Real life skills
- Real world learning
- Encourage community field trips to the boatyard
- Fishing (Menemsha) docks
- Hands on education spaces
- Woodworking shops
- Life Skills
- Home economics and woodshop kids should know how to cook a meal (not just cookies), use tools, sew on a button, etc.

Vocational Education

- Business - teaching what business is
- Connection to trades that are so valuable to our island community pride
- Industrial vocation that reflects the island
 - Landscape
 - Carpentry
 - Electricity
 - Mathematic
 - Social Care
 - Communication
 - Interest in World History

Community Priorities Continued

Improved Technology

- Up-to-date technology
- Future proof technology infrastructure (future proof as much as we can predict and prepare anyway)
- Ability for remote teaching -> zoom meetings with resources that are not restricted to the island
- User friendly with technology too
- SMART technology so the world can be at student's fingertips, in learning spaces that are adaptable.
- Technology free spaces
- 2 – 3 computer labs with both Mac and Windows

Display and exhibition

- Display space within the classroom and hallways

Collaboration and Community Hubs

- Neighborhood hubs
- Hubs of classrooms and adjacent spaces that serve as small learning communities
- Spaces for community gathering
- Spaces that foster collaboration and connection
- Maintaining sense of community between grades /staff
- Warm and inviting spaces scaled for children

Breakout Spaces

- Flexibility of spaces for breakout groupings
- Proximity to grade cluster / subject specialists
- Modern and flexible teaching / learning spaces that can adapt to ever changing teaching/learning needs of society/workforce, etc.
- Clear delineation for different age groups with plenty of opportunity for collaboration and overlap between age groups
- Dynamic, larger learning spaces that will meet the educational program of the school
- Adaptable / flexible spaces that provide both openness (windows) to bigger spaces (like modern offices) while having ability to give privacy too ...



- Adequate room for project-based learning
- Larger classrooms or smaller class size
- Multi-use spaces and rooms for larger projects
- Some flexible rooms where walls open up

Flexible Classrooms and Learning Spaces

- Comfortable, well equipped classrooms
- Flexibility in learning spaces / accommodations for different learning styles
- Flexibility – including mechanicals and technology connections
- Redesign of existing space to provide flexibility for different learning spaces while reorganizing the varied but smaller class size of the school
- Open flexible learning spaces
- Allow movement in day for students in and out of class
- More spaces for projects
- Quiet spaces
- Classroom size to accommodate learners / projects and instruction in a variety of styles
- Useful and efficient spaces for teachers and students

Flexible Furniture

- Tables and chairs at varying heights

Display and Exhibition

- Showcasing of student work
- Visible intellectualism
- Glassed in spaces

Community Priorities Continued

Ownership and Responsibility

- Ownership of the building/space (responsibility)

After School Programming

- More after school enrichment

Good Circulation Flow

- Flow purposeful
- Adjacencies but with travel around the building also
- Campus life setting (its ok to walk to another building)

Durability and Practicality

- Will last as a school into the future
- Use of materials and construction practices that will hold up over time
- "Future growth rooms" – spaces that are extra now, but can be used for future needed rooms, such as maker spaces, etc.
- Clean, spacious, efficient spaces, well equipped for creative activities
- Making practical use of all building
- Functional space that allows for differentiated learning and it also connects students to the community.
- Do not be short sighted with cost savings
- Long term savings relate to vibrant community and health
- Overall project driven by educational needs NOT by budget
- Affordable but no cheapest way to get it done
- Keeps cost reasonable but not necessarily cheap
- Increasing likelihood of extreme weather events. How to rebuild the school in a way where it can be safe, elevated enough in a hurricane/high tide/full moon flooding event. How can it function without power from the energy grid; use of wind/solar/generator; how can it model choice, use, and care of the technologies of the future.

Honoring of History

- Use building project as a learning experience, honoring building history if upgrading



- The next two decades represent a critical transition period for our island and humanity as a whole, therefore the school renovation must be a responsible and thoughtful effort towards supporting the development of future generations into a changed world. Preserving the past and transforming a building to this new reality is the challenge we face – value what we have, and become more responsible for our environment

Adaptive Reuse of Building

- Re-use, repurpose, renovate existing building
- Preserve existing space uses where they are functioning or at least adequate
- Retain the exterior look of the school with additions that fit
- Maintain façade – face lift and expand
- Prioritize unity of the school, inclusiveness, architectural integrity of the existing building
- Honoring the original material choices, brickwork (exterior) is an excellent example of early 20th century workmanship
- Try to restore as much as possible – realize asset value and retain historical integrity
- We have many generations of student who have gone to the Tisbury school. How can we keep the connections by re-using the building while also allowing for changing demographics, technologies, and expectations?
- Brighten hallways and classrooms

Community Priorities Continued

Healthy Building

- Excellent air quality with Phyto filter indoor gardens
- Mini splits, air purifiers and air-to-air ventilation in all rooms
- Healthy, comfortable environment (HVAC, paint, non-toxic materials)
- Safe structurally secure building envelope
- Healthy materials, we have now poisoned our environment and must restore a healthy future. Avoid PVC, vinyl, and other heavily processed materials that do not age well

Fiscal Responsibility

- Price that the town can support
- Building and financial efficiency costs - long and short term
- A school is an investment in a town's future, its next generations and this must be the highest consideration. What value can we add to our community?
- Taxes – consider community's ability to pay

Ease of Maintenance

- Maintenance – what is the maintenance plan and schedule – current school is dirty and neglected – not an inspiration to spend many millions more!
- Durable building that requires minimal maintenance
- The design is simple enough that whatever maintenance is needed it can be done without excessive costs
- A clear maintenance plan is established that the educators aren't responsible for, with end of life timelines built in

Community Use and Gathering

- A highly functional gathering space for community gatherings/town meetings, performances/theatre/concerts /sports events/presentations
- Community use / connection of generations
- Community space usage
- Empathy and integrity



- Multi-use community space
- Opportunity to establish strong community connections
- Neighborhood / community help
 - Playground
 - Gardens
 - Basketball
 - Tennis courts + fields
- Senior involvement tutoring

Sustainability

- Energy efficiency
- Key issues: flexibility, less is more -> material recovery and preservation
- 100% electric building and onsite energy generation
- Keep large windows for lots of natural light
- Remove or lift the drop ceiling in classrooms, regain the original height and natural light
- Net Zero Energy as a benchmark (basic minimum) – but go beyond ... low carbon, no red list materials – push the envelope. An opportunity to set an example as to how we should be building.
- Lower ceilings for energy efficiency, cozier feeling
- 100% solar powered
- Sustainability
 - What building materials are used
 - What heat/cooling system is used
 - Align with goal of zero emissions.
 - Have air quality, natural light

Community Priorities Continued

Sustainability Continued

- We live in MA, we keep our history, but we need it to make it environmentally forward thinking
- Electronic / solar window treatments
- Sustainable material used when possible
- Solar roofing
- Net zero energy use
- Aiming for zero fossil fuels and zero CO2
- Socially and environmentally responsible sourcing and materials
- Minimize use of materials that are low or no gas (low VOCs)
- Natural lighting
- Well maintained HVAC (good air quality)
- 100% solar powered with battery back-up
- Resource depletion is a serious global problem, being efficient about amount of materials is important
- Think regionally available and lasting choices, i.e. wood floor, masonry exterior

Building as Teacher

- Building creates learning opportunities
 - Energy efficiency
 - Impactive spaces
 - Historic perspective
- Students research and learn about this during construction process as well as later maintenance

Emergency Shelter Use

- Emergency sheltering in school is a huge benefit to the town

After Hour Use of Building

- Design so building can be used after hours for various activities
- After hours use of space
- After school drop-in center



Outdoor Spaces and Learning

- Outdoor learning opportunities
- Outdoor integration
- Outdoor classroom
- Connection to and use of outdoor space
- Expand use of outdoor spaces towards learning “town as campus”
- All forms of integration with the island ecology along with the fishing industry
- Year-round space for growing food
- Indoor gardens for learning and daily organic salads for all
- Indoor gardens producing salad greens for lunch
- WT + OB schools have indoor garden spaces and are handicap friendly
- Plants bumped out south facing window
- Incorporate a rooftop classroom(s) enclosed/not enclosed
- Fun and clean outdoor spaces, i.e. gardens, play structures, etc.
- Outdoor use /gathering space / connections / garden = represents all of us
- Dynamic outdoor spaces for play and learning
- A garden and orchard approach to the grounds around the school. Accessible to students and teachers and parents
- Space for fruit trees/edible landscaping
- Current playground areas seem prosaic to boring

Community Priorities Continued

Art / Music / Performance Spaces

- Music, sports, extra-curricular spaces
- Separate classroom(s) building on the property for the arts
- An excellent artistic and athletic potential space - meaning, children and teachers have ample time and space to move both bodies and imaginations

Athletics

- Gym – need one that is more adequate
- The gym is a space that has performed well and needs little attention therefore it is worth preserving
- Preserve gym



Multi-Purpose Cafeteria

- Cafetorium – room for kids to enjoy eating together
- Lunch-room space / time
- Space for cooking
- Joyful space for eating
- Cafetorium / multi-purpose spaces for anything from lunches to meeting spaces
- More flexible larger cafeteria
- Make main and cafetorium entrances handicap accessible
- Cafeteria space time for kids to eat midway through day

Good Storage

- Storage space in classrooms

Global Connections

- International guest speakers

21st Century Design Patterns

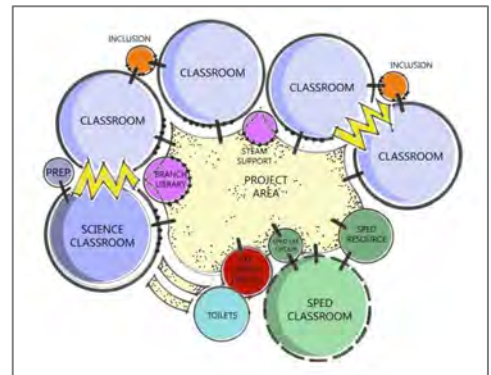
The following set of priority “21st Century Design Patterns” for the design of the renovated Tisbury Elementary School was developed by the approximately 33 community members who participated in one of two 2-hour long Visioning Workshops run by New Vista Design and Tappé Architects on January 22, 2020. A series of 30 Design Patterns that had been prioritized during the 2017 Tisbury School Educational Visioning process were introduced to workshop participants, after which time they discussed them at tabletop groups and then filled out individual handouts to indicate which Design Patterns were most important to them. The list below is organized in order of the number of times each Design Patterns was selected as important to individual participants.

- A. Sustainability (26 votes)
- B. Natural Light (25 votes)
- C. Community Use (21 votes)
- D. Outdoor Classroom (21 votes)
- E. Cafeteriums/Multi-Purpose Space (21 votes)
- F. Maker Spaces and FAB Labs (18 votes)
- G. Effective Storage (17 votes)
- H. Agile Classrooms (16 votes)
- I. Scalable and Varied Spaces (16 votes)
- J. Building as Teacher (16 votes)
- K. Display and Exhibition (15 votes)
- L. Breakout and Flex Spaces (15 votes)
- M. Gathering Spaces (14 votes)



21st Century Design Patterns Continued

- N. Security (14 votes)
- O. Seamless Technology (14 votes)
- P. Flexible Furniture (14 votes)
- Q. Classroom Neighborhoods (13 votes)
- R. Flexible and Zoned Classrooms (13 votes)
- S. Gathering Hubs (13 votes)
- T. Clusters of Learning (10 votes)
- U. Welcoming and Gatekeeping (10 votes)
- V. Professional Work Areas (9 votes)
- W. Push-In Special Education (8 votes)
- X. Visible Learning and Transparency (8 votes)
- Y. Media Space as Gathering Hub (7 votes)
- Z. Distributed Resources (6 votes)
- AA. Storytelling (6 votes)
- BB. Hallway Learning (6 votes)
- CC. Blended Learning (5 votes)
- DD. Wayfinding and Streetscapes (4 votes)
- EE. Distributed Dining (1 votes)



21st Century Design Patterns Continued

Additional priority Design Patterns that were added by individual participants include:

- Quiet Spaces
- Adult Ed Spaces
- Private Meeting Spaces
- Year Round Growing
- Indoor Gardens
- Green Roof
- Historic Elements
- Social Emotional Support
- School Pride
- Simple Design for Repair and Maintenance
- Covered Parking
- Maintenance Closets
- Airtight Window Coverings
- Use of Property That Town Bought on School Street
- Ergonomic Furniture



Student Priority Goals

The following student priority goals for the design of the renovated Tisbury School were recorded during Student Visioning Workshop that took place on January 22, 2020. Approximately 28 students, grades 2-8 shared their ideas about what they would like to see in a renovated building. The priorities below have been grouped thematically and represent the range of priorities shared by the entire group.

Tradition

- Morsels from old school as original art
- Memories of different generations

Better Classrooms

- Sliding doors
- Bigger windows
- Bigger classrooms
- Bigger algebra classrooms
- More comfortable classroom with beanbag chairs
- Curtains for the classroom
- Quiet classroom spots to work

Classroom Neighborhoods/Zones

- Close together classrooms
- Clusters (7+8th classroom together, 5+6th), specials together/electives
- Consider separate entries for lower and upper schools
- Separate spaces for k-4/5-8
- More wings around the school

Improved Thermal Comfort

- Better AC
- Heating
- Better air quality
- Band room heating
- Venting in the art room
- Ceilings that do not leak

More Hands-On Learning

- Science lab
- Better shop equipment
- FACS (family and consumer science)
- Cooking/sewing



Student Priority Goals Continued

Improved Security

- Security cameras
- Lock down area in classroom
- Safe lockdown areas

Handicapped Access

- Handicap spots
- More elevators
- Escalator

Sustainability

- Trash / recycling / compost in the halls
- More windows
- Windows that are not foggy and blurry
- Working shades
- Recycling bins around more
- Something like glass doors in classrooms so you can open it or have a lot of natural light

Quiet Spaces

- Nooks / "caves"
- Bay windows / nooks
- Bay windows to read
- Zen room
- Windowsill seats
- Emotional rooms
- A chill out room for kids/teachers where they can go to calm down

Improved Bathrooms

- Bigger bathrooms
- Larger bathrooms / NO gaps
- Bigger bathroom stalls
- New sinks
- Bathrooms in kindergarten classrooms

Better Acoustics

- Soundproof rooms
- Thicker walls

Flexible Furniture

- Cool furniture
- Whiteboard desks
- Cushion chair
- Comfortable chairs
- More furniture
- Bigger desks

Improved Lighting

- Cool lighting
- Better lighting, hallways are dark
- More lights in the school but different lights
- Nice looking led lights

Improved Flooring

- Comfy floor
- Level floors
- Floors that do not creak
- Wood floors and NO carpet
- Carpeted floors

Good Flow and Circulation

- Nice wide hallways with furniture
- Working bells so nobody gets late to class
- Less stairs

Better Hallways

- More light in hallways
- Wide hallways with furniture
- Music in halls
- More hallway work spaces

Gathering Spaces

- Student lounge
- An area to hangout

Thoughtful Colors

- Not super bright colors
- Colorful rooms



Performance Space

- Separate stage
- Bigger stage

Nice Entry

- Comfortable chairs in wings and entrance

Flexible Spaces

- Clear walls to watch in flex time place

Enrichment Spaces

- Bigger art room
- New and better materials for art and other classes
- Supplies room / project room
- Bigger Spanish / music room

Movement Spaces

- More open spaces

Student Priority Goals Continued

Outdoor Spaces

- Outdoor learning
- Outdoor areas outside class
- Small outdoor space
- More patios to make it possible to get more outdoors time
- More nature involved and more green life in and outside of school
- Rooftop garden
- Outdoor elevated space (like garage door idea)
- Better playgrounds and fences
- Bigger gardens
- Benches and tables for outside
- Sports equipment for the outdoor playground
- Bigger Playground
- A bigger playground – more toys to play on
- Grass outside instead of dirt
- More big toys on the playground – more slides
- Places to stay outside when it is cold outside
- Maybe school shaped like a circle and every classroom has a door leading into courtyard

Technology

- We do not have a media center on the island. To have a media center and basketball courts open on the weekend would be huge
- Better school supplies /technology
- More iPads for kids to do work
- Robotics class
- Makerspace
- A computer room to play anything on the computers
- Better shop equipment

Better Offices

- Bigger guidance counselor office
- Bigger offices

Storage

- Cubbies
- Lockers for older kids upstairs

Nurses Station

- Chairs in the emergency service room
- No privacy in nurse now, create walls for privacy
- Bigger nurse's room
- Larger nurse room / more privacy
- Bigger nurse's office with couches

Athletics

- New bigger gym
- Soccer nets
- Outside full basketball court
- Outside soccer field
- 2 outside hoops
- Better volleyballs
- More sport options
- A real outdoor court
- Baseball bases
- Track field
- Soccer / football field
- Basketball tickets every time you get an A
- Better outdoor equipment
- Sports room / larger locker room
- Vending machines for sports or healthy snacks
- Outdoor basketball courts with scoreboards and glass back boards (more than 1 court)
- More swings
- Bigger locker rooms and lockers
- Living grass
- Sports equipment
- More faculty games
- Better bleachers
- Separate gym, cafeteria and stage

Cafeteria

- A bigger cafeteria – round tables
- New lunch ladies
- More food options
- Vending machines with healthy snacks
- Student lounge
- Bigger lunch tables
- Space for quiet lunch
- Microwave for home lunch
- Welcoming art/tiles in the lunchroom
- Use food grown in garden for meals
- Lunch walls – paintings old in a good way
- More options for lunch
- Snack bar
- High ceiling in HS cafeteria
- Tall, wide, windows in cafeteria
- Breakfast/lunch bar
- Student lounge
- Cafeteria menu
- Make your own lunch (sandwich options, salads)
- Round tables in cafeteria
- Straws
- New paintings in the cafeteria
- Microwave
- Suggestion box
- Cafeteria near library

Library/Media Center

- Bigger and nicer library
- Bigger Library/reading nooks/more books
- Apple computers, not PCs
- Bean bags and couches in libraries

Blue Sky Ideas

The following “Blue Sky” ideas for the design of the renovated Tisbury School were recorded during the Student Visioning Workshop that took place on January 22, 2020. Approximately 28 students, grades 2-8 shared their aspirational “Blue Sky Ideas” about what they would like to see in a renovated building. The Blue Sky Ideas below have been grouped thematically and represent the range of ideas shared by the entire group. Diagrams drawn by students have also been included.

Blue Sky Ideas, though often not feasible due to budget or design constraints, sometimes hold the seeds of ideas and design approaches that can be implemented on some level within the design.



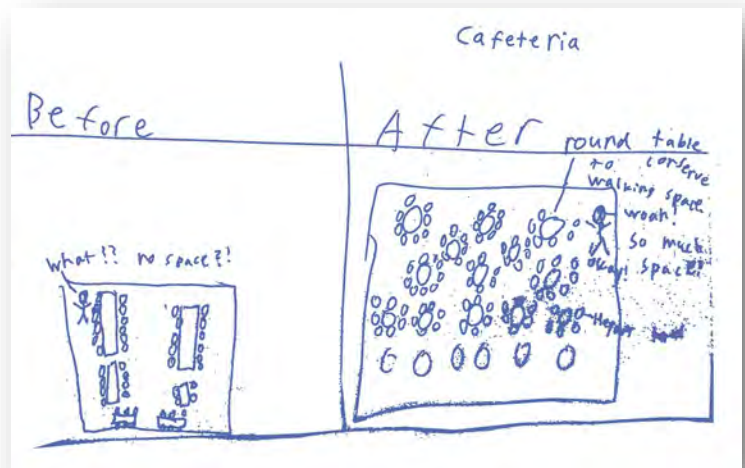
- School pet
- Class pets (dogs, cats, rabbits)
- Petting zoo/therapy animals to calm kids down
- Aquarium
- Fish tank walls - Hangout area with fish
- Greenhouse with exotic plants

- Pool (with water slide)
- Pool for swimming tournaments
- Water park (pool, slide, diving boards)

- Room with games and theater
- Glow in the dark room + led light
- Glow in the dark lights

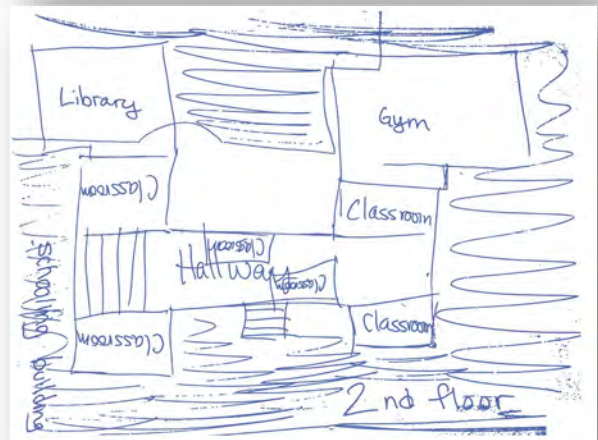
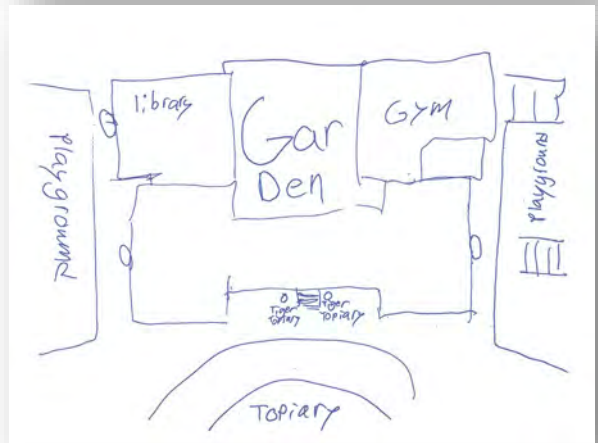
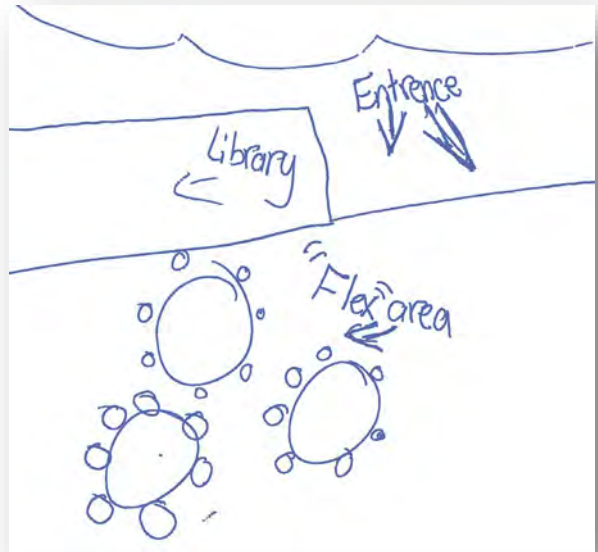
- Planetarium
- Space station
- Floating desk
- Bumper cars

- Taco bar
- Soft serve/ice cream bar
- Candy Store
- Chocolate factory
- Movie theatre
- School Store



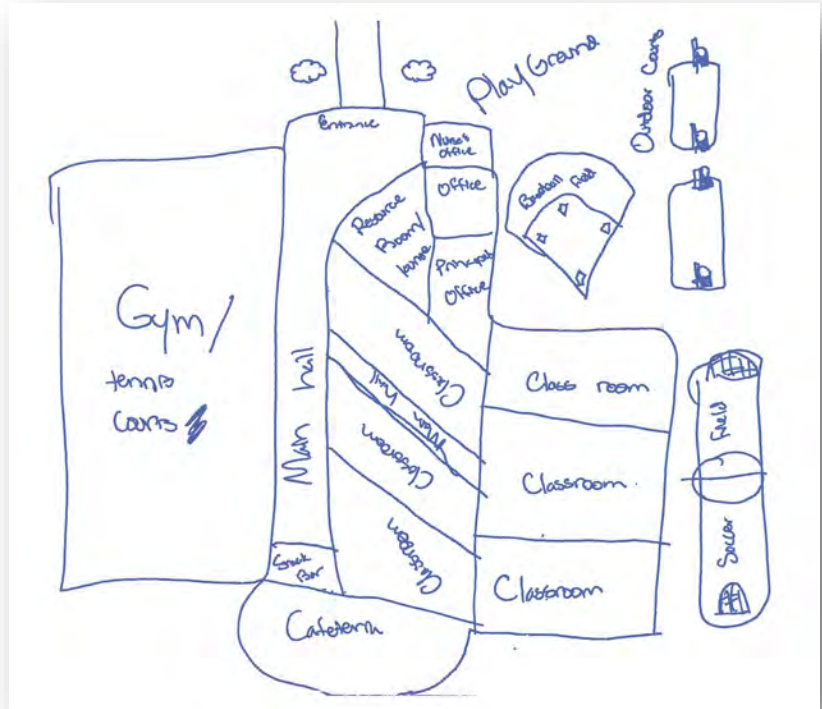
Blue Sky Ideas Continued

- Pajama day once a week
- Jeopardy type learning space
- Kitchen to learn cooking
- A big huge wall outside with everyone's name at the school
- Be able to walk into a class while the teacher is teaching
- Free time to do whatever you want
- No homework
- Half day each week for kids to socialize more with friends and family
- Celtic's tickets every time we get high honors
- Get \$5 every day
- A SPA
- A playground in the school with slides and swings
- Jump house
- Trampoline
- Driving range
- Monkey lounge
- Roller skates
- Zip line park
- Moving sidewalk for hallways
- Moving stairs

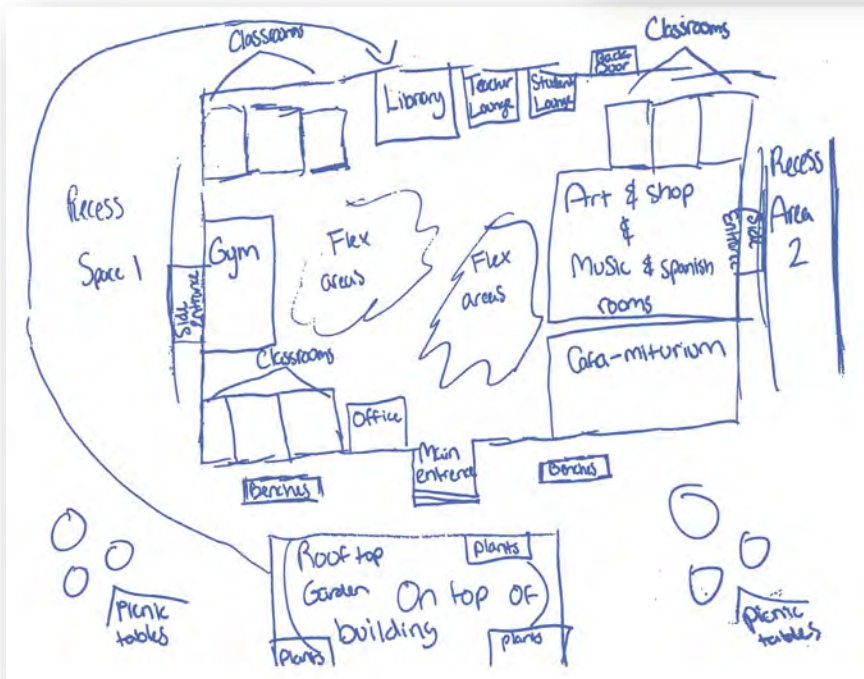


Blue Sky Ideas Continued

Whole School Diagram



Whole School Diagram



Workshop Participant Sign In List

1. Peter Goodale
2. Anna Edey
3. Henry Stephenson
4. Storm Swain
5. Mary Ellen Larsen
6. Alice Robinson
7. Ben Robinson
8. Cheryl Doble
9. John Custer
10. Marie Laursen
11. Dan Doyle
12. Anne Caldwell
13. Melissa Ogden
14. Tricia Sivakovsky
15. Wendy Andrews
16. Janet Packer
17. Olivia Rabbitt
18. Siobhan Mullin
19. Rita Jeffers
20. Sarah York
21. Melinda Loberg
22. Jay Grande
23. Sean Mulvey
24. Adam Darack
25. Nevette Previd
26. Jean Hay
27. Fae Kontje-Gibbs
28. Matthew Hobart
29. Harold Chapdelaine
30. Anna Cotton
31. Meredith Goldthwait
32. Rachel Orr
33. Anna Edey