

TISBURY SCHOOL

TISBURY, MA

TISBURY JOINT BOARDS + COMMITTEES MEETING

OCTOBER 20, 2020

AGENDA + PRESENTATION AVAILABLE ONLINE @

www.tisbury-school-project.com

Order of Business:

1. Call to Order + Virtual Meeting Reminders
2. Attendance
 - a. School Building Committee
 - b. Select Board
 - c. Finance Committee
 - d. School Committee
 - e. PTO
3. Review progress of Tisbury School project
 - a. Review of project progress and timeline
 - b. Review of SBC recommended Schematic Design (SD)
 - c. Review of SD Cost Estimates and draft Project Budget
4. Comments from Joint Meeting Board + Committee Members
5. Public Comments
6. Other topics not reasonably anticipated by the Chair within 48 hours of the meeting

TISBURY SCHOOL | 2019 PROJECT TIMELINE

June 2019:
The Town of Tisbury appointed the current Tisbury School Building Committee (9 members) to begin the study of a Renovation/Addition project

January 2020 – June 2020:
Study of existing conditions at the current Tisbury School building and initial concepts for a renovation and addition were developed, reviewed, and revised by the TSBC.

June 29, 2020:
The TSBC voted to adopt “Option 3” for further development and refining of the design and budget.

October 20, 2020:
Presentation to a joint meeting of the Tisbury Select Board, Finance Committee, School Committee, and PTO



September 2019:
The TSBC selected Daedalus Projects, A CHA Company, to serve as the Owner’s Project Manager (OPM)

December 2019:
The TSBC selected Tappé Associates to serve as the Architect

December 17, 2019:
The TSBC hosted a “Community Conversation” meeting to introduce the project team and gather community feedback about the project.

January 22, 2020:
A series of Community Visioning Workshops were held with community members and students of the Tisbury School (three meetings).

April 15, 2020:
A detailed, digital walkthrough of the conceptual designs were presented to the Tisbury School teachers and staff for feedback, comments, and ideas.



July 2020 – October 2020:
Detailed discussion, development, and adjustments were made to the selected design option during the Schematic Design (SD) Phase.

SD Cost Estimates and an updated draft Project Budget were presented on October 19, 2020.

TISBURY SCHOOL | VISIONING AND COMMUNITY PRIORITIES

On January 22, 2020 the Tisbury School Building Committee held three (3) Visioning Sessions with members of the community and students at the Tisbury School.

A [full report](#) by the Project Team’s Educational Visioning Consultant, David Stephen, was published and posted to the project website.



TISBURY SCHOOL | VISIONING AND COMMUNITY PRIORITIES

Some examples of Community Identified Priorities included:

Community Support:

Building needs to be relevant to the entire community, not just those with school age children.

Support for Educational Program:

Reflects goals of educational plan with creation of learning community for all residents. Forward thinking – to attract families and professional talent.

Healthy Building:

Healthy, comfortable environment (HVAC, paint, nontoxic materials). Safe structurally secure building envelope.

Universal Design for Learning:

Multi-style learning spaces.
Least restrictive classroom space.

Collaborative and Project-Based Learning:

Students lead learning -> “teaching spaces” designed for all sizes.
Give students 21st century educational setting and tools they require.

Sustainability:

Energy efficiency. Solar Power. NetZero.
Natural light. Air Quality.

Special Education + Support for English Language Learners:

Larger spaces for individualized learning.

Flexible Learning Spaces:

Open flexible learning spaces.
Accommodations for different learning styles. More spaces for projects.

Outdoor Spaces:

Expand use of outdoor spaces towards learning “town as campus”. All forms of integration with the island ecology.

TISBURY SCHOOL | SCHEMATIC DESIGN

- LEGEND**
- 1 GYMNASIUM ENTRANCE PLAZA
 - 2 OPEN SPORT PLAY: FITS OR SOCCER FIELD
 - 3 SPINNER AND OUTDOOR GYM
 - 4 OUTDOOR CLASSROOM
 - 5 RAIN GARDEN
 - 6 ASPHALT 5-12 PLAY AND OUTDOOR FITNESS
 - 7 OUTDOOR GYM
 - 8 GARDEN PLANTERS
 - 9 OUTDOOR CLASSROOM
 - 10 COURTYARD
 - 11 GARDEN PLANTERS
 - 12 EMBANKMENT SLIDE
 - 13 WOOD STAGE
 - 14 EXPOSED AGGREGATE CONCRETE SEATING AREA
 - 15 ENGINEERED WOOD FIBER PLAY
 - 16 OPEN LAWN
 - 17 RAIN GARDEN WITH EDUCATIONAL SIGNAGE
 - 18 BUS DROP-OFF
 - 19 MAIN ENTRANCE PLAZA
 - 20 PRE-K ENCLOSED AREA
 - 21 SERVICE AREA



DIRT LOT
25 SPACES

+50
SPACES

SPRING STREET

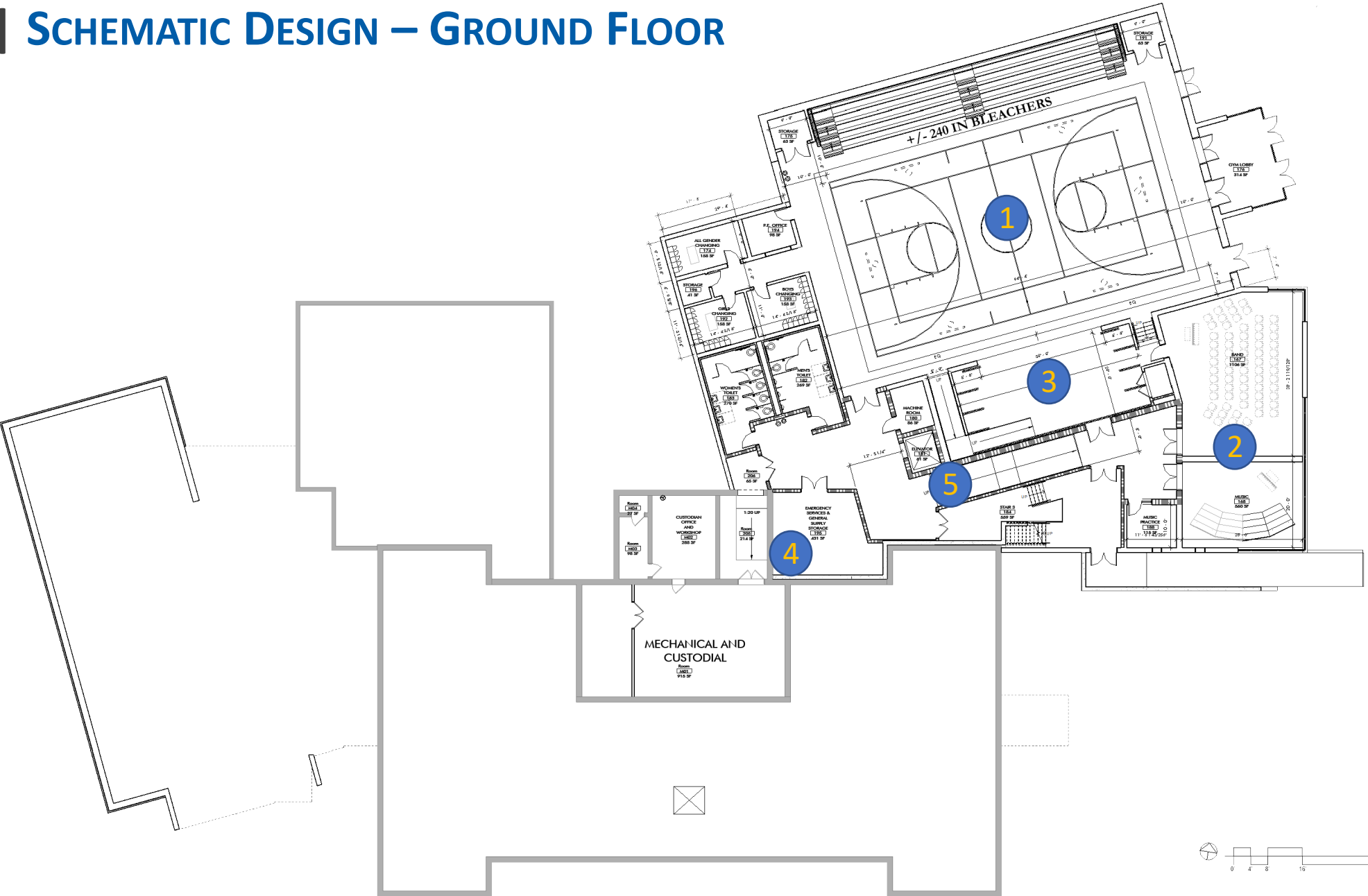
WEST WILLIAM STREET

VINEYARD HAVEN
FIRE DEPARTMENT

DRAFT

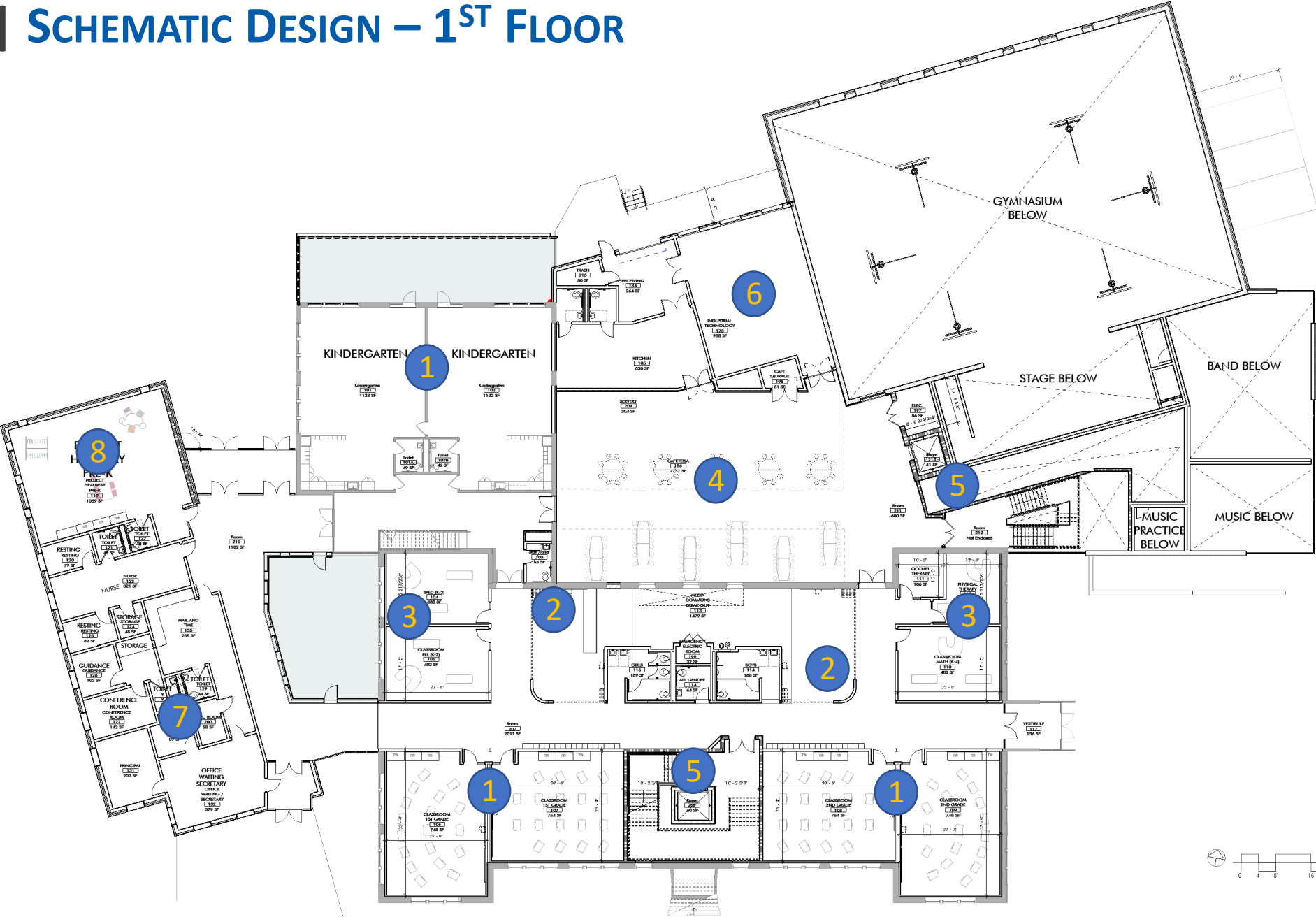
TISBURY SCHOOL | SCHEMATIC DESIGN – GROUND FLOOR

- 1 GYMNASIUM
- 2 UNIFIED ARTS
- 3 STAGE
- 4 STORAGE
- 5 STAIR/ELEVATOR



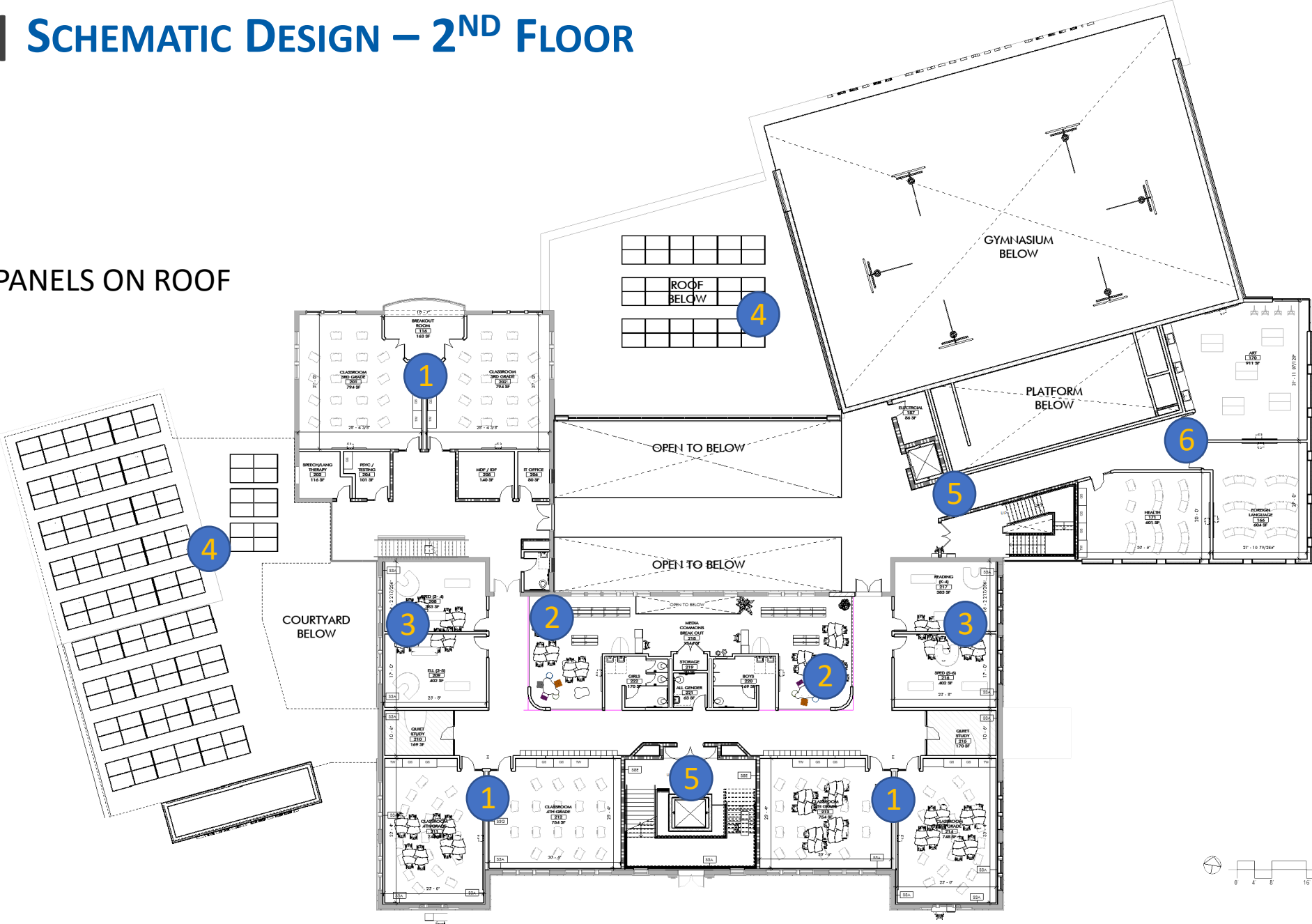
TISBURY SCHOOL | SCHEMATIC DESIGN – 1ST FLOOR

- 1 CLASSROOMS
- 2 MEDIA/BREAKOUT
- 3 SPECIAL ED
- 4 CAFETERIA
- 5 STAIRS/ELEVATOR
- 6 UNIFIED ARTS
- 7 OFFICE/ADMIN
- 8 PROJECT HEADWAY



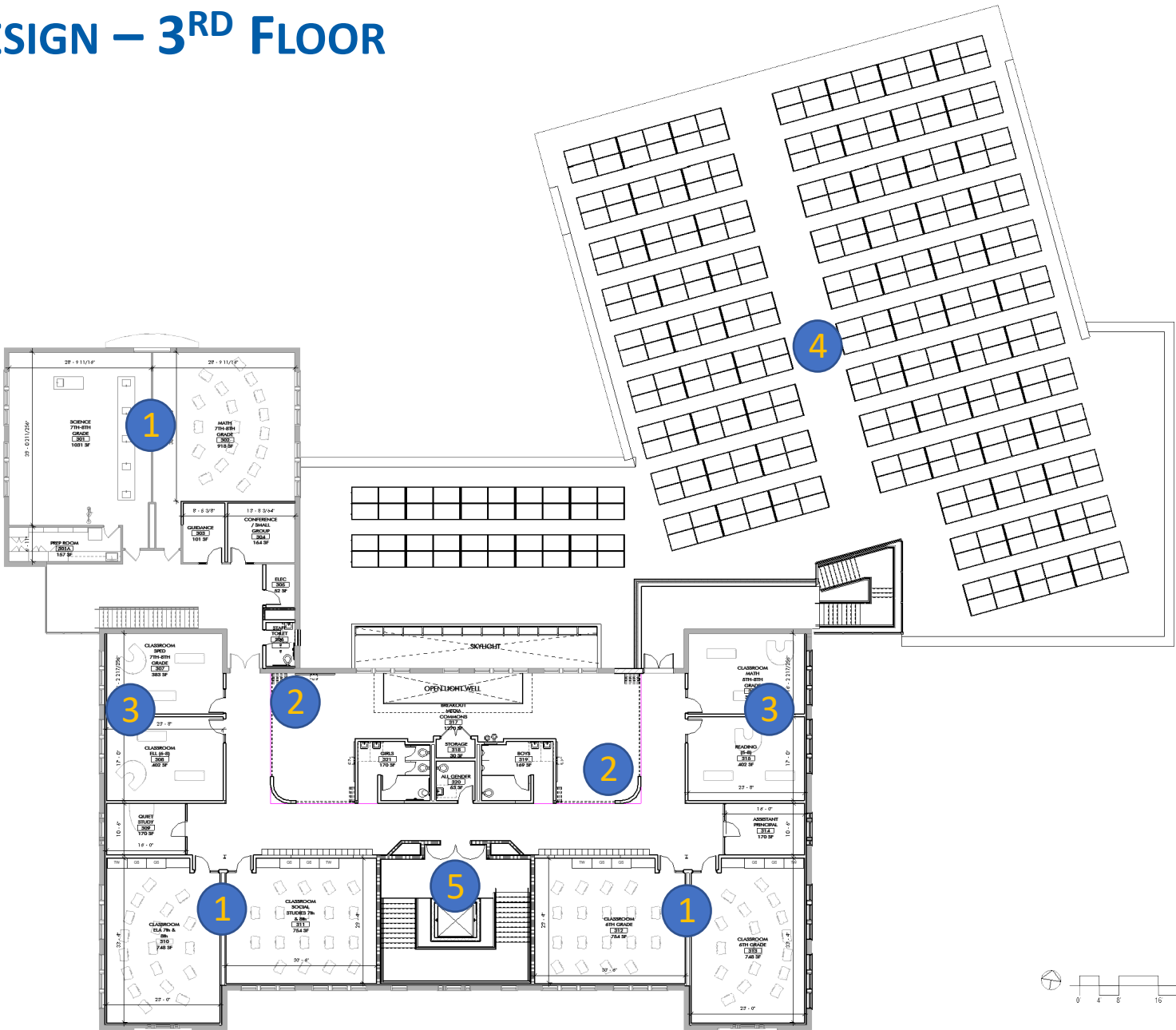
TISBURY SCHOOL | SCHEMATIC DESIGN – 2ND FLOOR

- 1 CLASSROOMS
- 2 MEDIA/BREAKOUT
- 3 SPECIAL ED
- 4 POTENTIAL SOLAR PANELS ON ROOF
- 5 STAIRS/ELEVATOR
- 6 UNIFIED ARTS



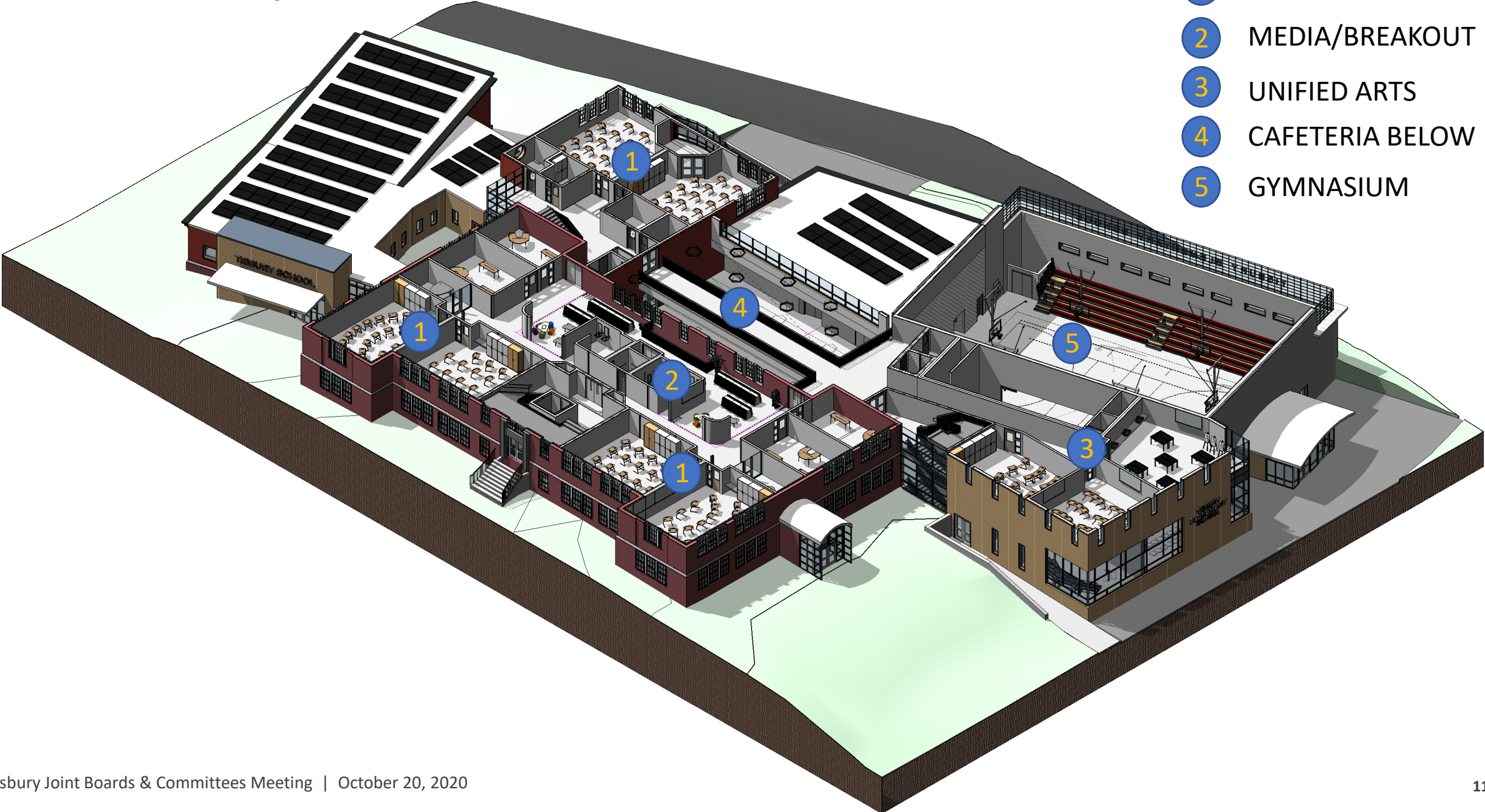
TISBURY SCHOOL | SCHEMATIC DESIGN – 3RD FLOOR

- 1 CLASSROOMS
- 2 MEDIA/BREAKOUT
- 3 SPECIAL ED
- 4 POTENTIAL SOLAR PANELS ON ROOF
- 5 STAIRS/ELEVATOR



TISBURY SCHOOL | SCHEMATIC DESIGN – AXONOMETRIC VIEW

- 1 CLASSROOMS
- 2 MEDIA/BREAKOUT
- 3 UNIFIED ARTS
- 4 CAFETERIA BELOW
- 5 GYMNASIUM











TISBURY SCHOOL | INSPIRATION FOR FLEXIBLE LEARNING SPACES



TISBURY SCHOOL | CONSTRUCTION COST ESTIMATE – SCHEMATIC DESIGN

SCHEMATIC DESIGN ESTIMATE COMPARISON	Tappé/PM&C SD Estimate	Daedalus CHA SD Estimate	----- DELTA -----	
DEMOLITION (Existing Building Demo, Abatement)	\$748,176	\$1,501,831	- \$753,655	- 50.18%
SUBSTRUCTURE (Foundations)	\$2,217,721	\$1,514,480	\$703,241	46.43%
SHELL (Exterior Enclosure, Roof)	\$8,511,789	\$8,428,309	\$83,480	0.99%
INTERIORS (Interior, Stairs, Finishes)	\$4,936,384	\$5,775,556	- \$839,172	- 14.53%
SERVICES (Elevator, HVAC, Plumbing, Fire Protection Electrical)	\$8,777,426	\$8,993,398	- \$215,972	- 2.40%
FURNISHINGS & EQUIPMENT (Kitchen, Gym, Audio/Visual Equipment)	\$1,020,040	\$917,216	\$102,824	11.21%
SITWORK (site prep, site improvements, utilities)	\$3,614,306	\$3,253,331	\$360,975	11.10%
MARK UPS (GCs, GRs, Insurance, Bonds, Escalation, Contingencies)	\$11,442,677	\$12,115,552	- \$672,875	- 5.55%
TOTAL CONSTRUCTION COSTS	\$40,520,343	\$41,318,530	- \$798,187	- 1.93%
ADD ALTERNATE: Photovoltaic Rooftop Panels (425 kW)	\$1,632,000	\$1,657,500	- \$25,200	- 1.54%

TISBURY SCHOOL | TOTAL PROJECT BUDGET – SCHEMATIC DESIGN

OPTION	Schematic Design Reno/Add
ADMINISTRATION (Legal, Printing, Advertising, Misc. Project Costs)	\$203,500
OWNERS PROJECT MANAGER (OPM Administration, On-Site Representative)	\$1,312,000
ARCHITECTURE AND DESIGN (Architectural and Engineering Costs, Reimbursable Services)	\$4,345,000
CONSTRUCTION (Demolition, Building Renovation, Sitework)	\$41,150,000
MISC. PROJECT COST (Utility Costs, Permitting, Moving Costs, Testing & Inspections, Temp Fac.)	\$2,900,000
FURNITURE FIXTURES AND EQUIPMENT (Classroom and Other Misc. Furniture, Building Technology)	\$675,000
CONTINGENCY (Owners Contingency)	\$2,600,000
TOTAL PROJECT	* \$53,185,500

** Total Project Budget estimate does not include Add Alternate cost for PV Panels*

STAY INFORMED | BUILDING COMMITTEE + TOWN RESOURCES

READ MORE HERE!

Tisbury School Project Website:

www.tisbury-school-project.com

EMAIL US!

Tisbury School Building Committee:

tiburyschoolproject@gmail.com

Sign-up for Town e-Alerts!

Town of Tisbury Website:

www.tisbury.ma.gov